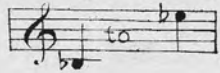


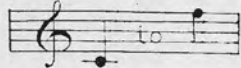
Mrs. J. L. Bennett

Anglo-Canadian
Music Pub. Ass'n. (Ltd)
TORONTO, CAN.

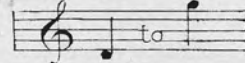
Nº 1 IN E FLAT.



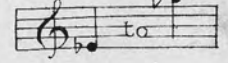
Nº 2 IN F.



Nº 3 IN G.



Nº 4 IN A FLAT.



Sung by M^R. EDWARD LLOYD.

THE
STAR OF BETHLEHEM

SONG

The Words by

F. E. WEATHERLY,

The Music by

STEPHEN ADAMS.

PRICE 2/- NET.

ORGAN OR HARMONIUM ACCOMPANIMENT (AD LIB) PRICE 3P

THE STAR OF BETHLEHEM ARRANGED FOR THE PIANOFORTE BY BOYTON SMITH 2/- NET.

ORCHESTRAL ACCOMPANIMENTS (IN THE KEY OF F) CAN BE HAD.

London,
BOOSEY & CO 295, REGENT STREET. W.

MAY BE SUNG IN PUBLIC WITHOUT FEE OR LICENSE.

WHALEY, ROYCE & CO.
MUSIC DEALERS,
183 YONGE STREET

Handwritten signature

THE STAR OF BETHLEHEM

1875



THE STAR OF BETHLEHEM.

Words by
F. E. WEATHERLY.

Music by
STEPHEN ADAMS.

VOICE. 

PIANO. *Andante Moderato.* 



cresc. 

PED. * PED. *



sostenuto. 

An Organ or Harmonium accompaniment (ad lib) can be had Price 3d

Quasi Parlato.

It was the eve of Christ-mas, The snow lay deep and white, I

p

sat be-side my win-dow, and look'd in-to the night, I heard the church bells ringing, I

saw the bright stars shine, And child-hood came a-gain to me, With all its dreams divine.

rall.

Tempo.

Then, as I list-ned to the bells, And watch'd the skies a-far,

p

Out of the East ma - jes - ti - cal There rose one ra - dant star; And

poco accel
 ev' - ry oth - er star grew pale Be - fore that heav'nly glow, It seem'd to bid me
Cantabile.
f p
cres *cen* *do.*
 PED. *

fol - - low, And I could not choose but go. It

PED. * PED. *

Tranquillo.
 seem'd to bid me fol - - low, And I could not choose but go. 8
f p sostenuto.
 PED. * PED. *

The Star of Bethlehem.

Tempo.

f

dim.

PED. * PED. * PED. *

From

Quasi Parlato.

street to street it led me, by ma-ny a man-sion fair, It shone thro' din-gy case-ment on

p

ma-ny a gar-ret bare; From high-way on to high-way, thro' al-leys dark and cold, And

rall *Tempo.*

where it shone the dark-ness was flood-ed allwith gold. Sad hearts forgot their sor-row, Rough

p

dolce.

hearts grew soft and mild, And wea - ry lit - tle chil - - dren

poco accel.

turn'd in their sleep and smil'd; While ma - ny a home - less wan - der - er up -

cres *cen*.....

Cantabile.

- lift - ed pa - tient eyes..... Seem - - ing to see a

do. *f p*

PED. *

home at last be - - yond those star - ry skies.

PED. * PED. *

Tranquillo.

Seem - ing to see a home at last be - yond those star - ry

f *p* *sostenuto.*

PED. * PED. *

skies.

Tempo.

f *p*

PED. * PED. *

Più mosso.

And then me - thought earth

dim. *p*

fa - - - ded, I rose as borne on wings, Be -

dim.

yond the waste of ruin - ed lives, the press of hu - man

Poco Animato.

things; A - bove the toil and sha - - dow, A -

cresc.

bove the want and woe, My old self and its

cresc.

molto rall. *Tempo.*

dark - - ness seem'd left on earth be - low. And

colla voce. *f*

The Star of Bethlehem.

affret poco a poco

on - ward up - ward shone the star, un -

p

Meno.

til it seem'd to me, It

flash'd up - on the gold - - en gate, And

cres *cen* *do.*

PED. * PED. * PED. * PED. *

allargando

o'er the crys - - tal sea; And

molto rall

PED * PED. *

Tempo primo

then the gates roll'd back - - - ward, I.....

ff *p*

PED. * PED. *

stood where An - gels trod; — It was the star, the star of

con forza. *f*

PED. * PED. * PED. *

Beth - le - hem had led me up to God, The star, the

dim. *Grandioso.* *p*

PED. * PED. *

star had led me up to God

ad lib. *colla voce.* *ff*

PED. * PED. *

NEW & STANDARD SONGS & BALLADS.

PRICE TWO SHILLINGS EACH NET.

The Compass of the first Key only is given: from this the Compass of the other Keys can be readily found.

Sung by	Compass of 1st key.	Sung by	Compass of 1st key.	Sung by	Compass of 1st key.	Sung by	Compass of 1st key.
STEPHEN ADAMS THE FRONT, D, E ⁷ and F	A to D	CHARLES DEACON THE HEAVENLY WAY, C, D } and E ⁷	B to D	J. L. MOLLOY THE SONG YOU SANG TO ME, C, D and E ⁷	B to E	MISS CLARA BUTT	B to E
DOWNLAND, C, E ⁷ and F ...	G to C	SUMMERLAND, C, D and E ⁷ ...	C to E	THE IRISH PIPER, D and E ...	B to E	MISS KATE COVE	B to E
WIDE-EYED NANCY, D, E ⁷ & F	A to D	TWILIGHT ECHOES, G, A ⁷ & B ⁷	A to D	WON'T YOU COME BACK, C, } D and E ⁷	C to D	MADME. BELLE COLE	C to D
VALLEY BY THE SEA, } D ⁷ , E ⁷ and F	G to C			THE CARNIVAL, C, D ⁷ and E ⁷	B to E		B to E
EU, MARIE, E ⁷ , F, G & A ⁷	B ⁷ to E ⁷			HOME, DEARIE, HOME, D, E ⁷ & F	A to D		A to D
HOLY CITY, A ⁷ , B ⁷ , C } and D ⁷	C to E ⁷			THE SAILOR'S DANCE, E ⁷ & F	B ⁷ to E ⁷		B ⁷ to E ⁷
ISLAND OF DREAMS, C, } E ⁷ and F	C to E			LIGHTHOUSE KEEPER, C and D	C to D		C to D
AT AM I, LOVE, WITHOUT } THEE? G & B ⁷	D to E			THE LADS IN RED, E ⁷ and F	B ⁷ to E ⁷		B ⁷ to E ⁷
THE FOUNTAIN, E ⁷ , F & G	B ⁷ to E ⁷			THE THREE BEGGARS, C, D & E	C to D		C to D
S WORK-A-DAY WORLD } and B ⁷	A ⁷ to E ⁷			OUR LAST WALTZ, B ⁷ C & D	A to E ⁷		A to E ⁷
NA, C, E ⁷ , E and F	C to E			LOVE'S OLD SWEET SONG, E ⁷ , } F and G	A to C		A to C
STAR OF BETHLEHEM, } E ⁷ , F, G and A ⁷	B ⁷ to E ⁷			TO-MORROW WILL BE FRI- DAY, E ⁷ and F	B ⁷ to E ⁷		B ⁷ to E ⁷
Y ALL LOVE JACK, D, E ⁷ } and F	A to D			THE BOATSWAIN'S STORY, } C, D and E ⁷	G to D		G to D
GARONNE, E ⁷ , F, G & A ⁷	E ⁷ to E ⁷			THE KERRY DANCE, E ⁷ and F	C to F		C to F
MAID OF THE MILL, } E ⁷ , F, G and A ⁷	D to E ⁷			LONDON BRIDGE, D and E ...	A to D		A to D
OWL, B ⁷ , C and E ⁷	A to D			DARBY AND JOAN, F, G and A	C to C		C to C
ROMAN LASS, A ⁷ , B ⁷ & C	E ⁷ to E ⁷						
LITT ERO, B ⁷ , C & D	B ⁷ to D			ERNEST NEWTON AILSA MINE, D and F ...	D to E		D to E
LDREN THE CITY, D & F	A to D						
ED COMPANY, F, G and A	C to F			C. PINSUTI THE LAST WATCH, D, F and G	D to E		D to E
A MIDSHIPMITE, B ⁷ , C & D	B ⁷ to D						
NCY LEE, C, D and E ⁷ ...	G to D			ARTHUR SULLIVAN THE LOST CHORD, E ⁷ , F, G, } A ⁷ and A	B ⁷ to E ⁷		B ⁷ to E ⁷
TAR'S FAREWELL, D & E ⁷	B to E			MY DEAREST HEART, A ⁷ & B ⁷	C to A ⁷		C to A ⁷
BLUE ALSATIAN MOUN- } TAINS, D, E ⁷ and F	D to F ⁷			LET ME DREAM AGAIN, C, } D and E ⁷	B to E		B to E
				SLEEP, MY LOVE, D ⁷ and F ...	A ⁷ to D ⁷		A ⁷ to D ⁷
				ONCE AGAIN, D and F ...	C to E		C to E
				GOLDEN DAYS, D ...	A to F ⁷		A to F ⁷
				LOOKING BACK, D and F ...	A to D		A to D
				WILL HE COME? D, E ⁷ and F	A to C		A to C
HAMILTON AIDÉ MEMBER OR FORGET, D & F	D to C						
				C. V. STANFORD THE OLD NAVY, C and D ...	B ⁷ to E		B ⁷ to E
				THE LITTLE RED LARK, F ...	C to F		C to F
				MY LOVE'S AN ARBUTUS, F, } G, A ⁷ and B ⁷	C to D		C to D
				FATHER O'FLYNN, A ⁷ , B ⁷ & C	A ⁷ to E ⁷		A ⁷ to E ⁷
				HOPE TEMPLE ALL MY WORLD, D, E ⁷ and F	C to F ⁷		C to F ⁷
				SLEEP, MY BELOVED, F, G & A ⁷	C to F		C to F
				ROBY DARLIN', E ⁷ and F ...	B ⁷ to E ⁷		B ⁷ to E ⁷
				LOVE'S TEMPLE, C and E ⁷ ...	G to E		G to E
				MEMORIES, F and A ⁷ ...	C to E		C to E
				LOVE WERE ENOUGH, E ⁷ , F & G	B ⁷ to E ⁷		B ⁷ to E ⁷
				THOUGHTS AND TEARS, C, } D ⁷ , E ⁷ and F	C to D		C to D
				IN SWEET SEPTEMBER, D, E ⁷ } and F	C ⁷ to E		C ⁷ to E
				THERE ARE NONE LIKE TO THEE, D, E ⁷ and F ...	A to E		A to E
				A MOTHER'S LOVE, E ⁷ , F & G	B ⁷ to E ⁷		B ⁷ to E ⁷
				MY LADY'S BOWER, E ⁷ , F & G	A ⁷ to D		A ⁷ to D
				FOND HEART, FAREWELL, } C, D ⁷ and E ⁷	E to F		E to F
				AN OLD GARDEN, G, A ⁷ & B ⁷	B to E		B to E
				WERE WE LOVERS THEN? } E ⁷ , F and G	B ⁷ to E ⁷		B ⁷ to E ⁷
				WHEN WE MEET, F, G & A ...	C to D		C to D
				A. GORING THOMAS DISTANT VOICES, C and D ...	C to G		C to G
				WINDS IN THE TREES, C, E ⁷ & F	G to D		G to D
				H. TROTÈRE SONS OF MARS, G	G to E		G to E
				THE DEATHLESS ARMY, A } and B ⁷	A to D		A to D
				F. E. WEATHERLY THE BEE AND THE SONG, } G and B ⁷	B to F		B to F
				FRED. J. WHISHAW. (Arranged by VAINKA'S SONG, F and G ...	B ⁷ to F		B ⁷ to F
				MAUDE V. WHITE LOVE ME, SWEET, WITH ALL THOU ART, D, F & G	C ⁷ to D		C ⁷ to D

** The above Songs may be sung in public without fee or license.

The public performance of any parodied versions, however, is strictly prohibited.