

Dictionary of Moravian and Silesian Anoikonyms:
A New Project of Czech Linguistics

Milena Šípková
Czech Republic

Abstract

The priority of our dictionary of anoikonyms (the term used in traditional Slavic onomastic science; in different onomastic schools minor place names, field names, Flurnamen, microtoponyms, etc.) lies in the unique material (collected mainly through a correspondence survey and covering 96% of the territory under investigation), and in the theoretical and methodological conception that represents the Czech onomastic school (V. Šmilauer, R. Šrámek, I. Lutterer, J. Pleskalová, L. Olivová-Nezbedová, M. Harvalík). The onomastic interpretation of an anoikonym is not limited to etymology or word-formation; the *Dictionary* aims to reveal the variability of anoikonyms together with their geographical differentiation, their structure, their relation to the object as well as the motivational aspect of the naming process. In this way, it represents a new type of anoikonymic (microtoponymic) dictionary which is dominated by linguistic interpretation of the material comprising a great number of dialect forms. Many lexical units that cross the Czech border to Poland and Slovakia give the *Dictionary* an interslavic, Central-European character; registration of numerous lexical units of German origin, in contrast, emphasizes the multi-lingual connection with the German neighbourhood. The theoretical and methodological approach is illustrated by examples. The treatment of Moravian and Silesian anoikonyms may become a methodological basis for the anoikonymy (microtoponymy) in the Slavic Onomastic Atlas.

The Czech Republic consists of three historical provinces – Čechy (Bohemia), Morava (= Moravia, historically: Margraviate of Moravia) and part of historical (Upper) Slezsko (= Silesia, historically: Silesian Principality). At present, the Czech Republic is not divided into historical provinces any more, but into 14 newly created regions. The tradition of the division into historical provinces is, nevertheless, still alive and many scientific projects respect it. It also applies to the project of the *Dictionary of Moravian and Silesian Anoikonyms* (further *DMSA*), which is being compiled at the Department of Dialectology of the Institute of the Czech Language of the Czech Academy of Sciences in Brno. The name *Bohemia* is of Celtic origin. The capital of the entire Czech Republic and of historic Bohemia is Prague. The centre of the territory called Moravia (the name comes from the river of the same name and is of pre-Slavic origin) is Brno. From a linguistic point of view it is significant that the regions of Moravia and Silesia still demonstrate great dialectal differentiation and that the territorial dialects there have been well preserved. This situation finds reflection in the language form of anoikonyms. On the territory of Bohemia, the dialects were significantly levelled (they have only been preserved at the outskirts of the region).

The Czech Republic

(See http://en.wikipedia.org/wiki/Czech_Republic [2008-10-03].)



Čechy (Bohemia)



Morava (Moravia)



Slezsko (Silesia)

The work on the *DMSA* began in 2005, after the completion of the most important Czech dialectological project – the five-volume *Český jazykový atlas* (*Czech Linguistic Atlas*, 1992-2005; the sixth volume entitled *Supplements* is at the printers) providing nearly 1,600 language maps (together with comprehensive commentaries) which give a complete picture of the territorial differentiation of the Czech language. The first three volumes deal with lexis, the fourth volume with morphology, and the fifth volume with phonology and syntax. The *Supplements* also include two CDs of audio recordings of dialect speech (one for Bohemia, one for Moravia and Silesia) and their transcriptions as well as a fairly complete bibliography of Czech dialectology starting from 1968.

The primary motivating factor for undertaking the work on the *DMSA* was the compilation and publication of a parallel dictionary for the region of Bohemia in Prague (*Dictionary of Minor Place Names in Bohemia* (Matúšová 2005, 2006, 2007) as well as the preparation of a dictionary of anoikonyms in neighbouring Slovakia.

The priority of our dictionary lies in the quality and the large extent of the material as well as in its theoretical and methodological conception.

The *DMSA* processes unique, more or less complete material. It comprises almost a quarter of a million (nearly 225,000) records, stored on paper filing cards, from almost 96 % of the territory under investigation. The material was collected in three ways (correspondence inquiry, direct field work, diploma and doctorate theses). The survey in Moravia and Silesia was carried out mainly in 1965–1989 as an integral part of the nation-wide inquiry, and it is one of the largest projects of Czech (as well as Slavic) onomastics. It aimed at acquiring the complete list of anoikonyms from the cadastre of each village in those parts of Moravia and Silesia that were permanently inhabited by those of Czech nationality. (In the area of Český Těšín, near the Polish border, also of Polish nationality.) Villages in the borderland with a prevalence of inhabitants of German nationality were not included. It is important to note that the material was collected at the last minute: because of collectivization and distinctive changes in both agriculture and village life in general, many anoikonyms are no longer used, many disappeared. Our material therefore is of historical value as well: it is an important source of regional history.

The idea of compiling a dictionary of minor place names was also influenced by the elaborate theoretical and methodological conceptions of the Czech onomastic school. The representatives of this school are Vladimír Šmilauer, Rudolf Šrámek, Ivan Lutterer, Jana Pleskalová, Libuše Olivová-Nezbedová, Milan Harvalík and others. Czech onomastics possesses lexicographically processed material both in the sphere of place names (Profous 1947-1960; Hosák; Šrámek 1970-1980), and in the sphere of anthroponyms (Beneš 1962, Svoboda 1964, Pleskalová 1988); at present, it is necessary to process the third sphere of names, i.e., names of uninhabited objects. In Czech onomastics, in accordance with the terminology approved by the Terminological Committee of the International Council of Slavic Onomastic Science (*Osnoven system i terminologija na slovenskata onomastika*, 1983) they are called anoikonyms, and their core is represented by what in different onomastic schools has been referred to as minor place names, field names, Flurnamen, microtoponyms, etc.

The *DMSA* intends to introduce complex anoikonymic material from the (eastern) half of the territory of the Czech Republic in a broad and many-sided view and in this way to mediate the synchronic systemic picture of Moravian and Silesian anoikonymy (microtoponymy) from the middle of the 20th century.

It should be emphasized that the onomastic interpretation of anoikonyms in our *Dictionary* is not limited to etymology; the *DMSA* aims to describe four basic levels of the collected material: to give explanations of the separate items, to express models of the structural formation of names, to reveal the systemic qualities of this significant group of toponyms, and to discover the geographic and frequency distribution of the individual types of names. In this way, the *DMSA*

represents a new type of anoikonymic dictionary, the dominant feature of which is the combination of linguistic description and onomastic interpretation of the material. Special attention is given to a large number of dialectal forms of names, which is a typical feature of Moravian and Silesian material. A great number of lexical units that have spread across the Czech border to Poland and Slovakia give the *Dictionary* an interslavic character; the existence of numerous lexical units and anoikonyms of German origin, on the other hand, is a reflection of the language, social and cultural contact with German border regions. (With the arrival of German colonists on our territory at the end of the 12th century, two different languages, two different proprial systems came into contact. Until nowadays we find traces of this neighbourhood not only in anthroponymy and oikonymy (place names), but also in anoikonymy. In our material, anoikonyms with German roots (bases), e.g., *acker(l)-*, *acht(el)-*, *-bach-/pach-*, *-berg-/berk-/perk-*, *breit-*, *-brenn-/brannt-/brand-*, *burg-/burk-/purg-/purk*, *-dorf-*, *eich(el)*, *-eis-*, *end(e)-*, *-engel-*, *-erb-*, etc. are registered. Names of German origin were mostly adapted to Czech. They appear primarily at the outskirts of the traditional Czech settlement in the regions bordering the former German settlement.)

The treatment of Moravian and Silesian anoikonyms may become a methodological basis not only for the dictionary of anoikonyms, which is under preparation in Slovakia, but one day, hopefully, for the anoikonymic part of the *Slavic Onomastic Atlas* as well.

The question naturally arises: why in the Czech Republic, on a relatively small territory, two dictionaries of minor place names have been compiled concurrently – one in Prague for the region of Bohemia and the other in Brno, for the regions of Moravia and Silesia?

This question might be answered in the way that our colleagues in Prague started compiling the dictionary many years earlier than we in Brno did and that the material from Bohemia was collected from Prague and is deposited in Prague, while the material from the regions of Moravia and Silesia was collected from Brno and is deposited in Brno. It should also be mentioned that the material comes from two historically different territories (Bohemia and Moravia / Silesia).

Although this is true, it is not sufficient:

- First of all, theoretical and methodological differences in the conception of the dictionary occurred over the course of years among the Prague and Brno top-ranking representatives of onomastic science.

- The Moravian and Silesian material compels the authors to respect the profound dialect differentiation of the Moravian and Silesian territory (e.g., already in the lemmatization of the entry, cf. Moravian entry BARVÍRŇA and the Bohemian entry BARVÍRNA), which in the material from Bohemia is not necessary.

- The most important justification for the (separate) compilation of two dictionaries is the conceptual difference between the two projects and the future result. It is not, however, a matter of prestige. The difference is primarily given by the development of computer technology. When our colleagues in Prague began the project in 1978, they envisioned the dictionary as a traditional, “paper” one; the digitization of the material for them was, and still is, only a “tool”, a means to the realization of a traditional dictionary: “The computer was to help with the alphabetical ordering of the records and objects, with counting the frequency of the records and objects, and with the drawing of anoikonyms on the map of Bohemia.” (Olivová-Nezbedová; Malenínská 2000: 44). Our conception, however, is quite different. Advances in computer technology have helped us:

- (a) to outline a primarily digital interactive dictionary (my colleague Libuše Čížmarová clarifies this in more detail in this volume);
- (b) to compile (as one of its products) a traditional, “paper” dictionary as well;
- (c) in cooperation with the Natural Language Processing Laboratory of the Faculty of Informatics at Masaryk University in Brno (that specializes in the digitization of dictionary

corpora) to create a program designed specially for the *Dictionary of Moravian and Silesian Anoikonyms*; the program enables the user to store the anoikonyms with their characteristics in the digital database and subsequently project them onto the maps with the help of the Geographic Information System (GIS). The program has been continuously improved, and further possibilities of advanced searching have been added.

So far, one third of the material has been digitized. At the same time, the first entries of the *DMSA* have been compiled. From an estimated number of nearly 30,000 entries, more than 1,000 have been processed.

In the second part of this paper I would like to demonstrate the aforementioned theoretical and methodological sources using the example of the entry BABA /BÁBA ‘old woman’.

Since the material for the *DMSA* comprises more entries with the basis *-bab-/-báb-* (e.g., BABA / BÁBA, BABÍ / BÁBÍ, BABICE, BABKA, BABKYNĚ etc.), apart from the basic entry we also introduce the so-called summary entry in our *Dictionary*. The summary entry is represented not by a word but by a basis (root) contained in more (basic) entries; the summary entry gives brief yet comprehensive information of the etymological (reference to the origin and meaning), linguistic (dialectal forms) as well as geolinguistic character about the given basis (root), without having to repeat the information with the respective entries of the given group. It also gives a brief survey of the motivations that gave rise to the use of the given basis in the respective anoikonym(s), or possibly, the typology of specific types of motivation. The summary entry also contains a list of all entries composed of anoikonyms with the basis *-bab-/-báb-*.

-bab-/-báb-

One of the most frequent appellative bases in anoikonyms, it exists in two variants: with a short and a (less frequent) long vowel and is contained mainly in the appellative *baba / bába* ‘old woman’, ‘grandmother’ (expressively also ‘a woman in general, especially a married one’), ‘midwife’. The appellative *baba / bába* is all-Slavic; according to V. Machek (1971: 40) it has “the same basic meaning and often also the same secondary meanings in all Slavic languages”; it is a lalic (“children’s language”) word.

In anoikonyms, different figurative meanings that often exist only in dialect appellatives or anoikonyms are frequently used, e.g., ‘hill’ (usually of a rounded shape) reminding of a (bent, shapeless or stocky) woman’s figure or a relief of a woman’s bust, ‘rock / stone’ (of special type, usually towering), ‘stone cross’, (towering) ‘stone’, (bigger, black) ‘cloud’ (especially a thundercloud); the assumed meaning ‘swamp, muddy place’ (appearing in Polish onomastics, cf. Zierhoffer 1987: 31, 32, Malec 2003: 37), was not registered in Moravian and Silesian anoikonyms. As a frequent source of motivation, the alleged Slavic goddess *Baba*, worshipped by ancient Slavs as a protectress of the family, the goddess of fertility and life, sometimes also referred to as a goddess of clouds, is used. Machek (1971: 40), however, denies this connection.

Anoikonyms with the basis *-bab-/-báb-* contain numerous derivatives from the appellative *baba / bába*, recorded in figurative meanings as well, e.g., *babka* ‘sheaf’, ‘(little) potato’, ‘(wild) pear’, ‘dwarf tree’, ‘low value coin’, ‘fruit of burdock’, ‘type of mushroom’, etc., *babinec* ‘haystack’, ‘type of thistle’, ‘hillock’, *babí* ‘less important’, etc.

Anoikonyms with the basis *-bab-/-báb-* are concentrated mainly in the western half of Moravia; less frequently they were recorded also on the rest of the territory. They are characteristic especially for the undulating, hilly, not too high terrain.

The following is the list of headwords that refer to the summary entry *-bab-/-báb-*:
BABA / BÁBA, BABÁK, BABÁRNA, BABČINA, BABČINY, BABĚHRÁDKY, BABÍ / BÁBÍ, BABICE, BABIČČINO, BABÍK, BABÍMOSTKA, BABINA, BABINEC, BABÍNEK, BÁBINKA, BAJÁK, BABKA, BABKYNĚ, BABSÝ, BABŠÁCKÁ, BABUŠKA

The following is an example of one type of the basic (multiple) entry. In the basic (multiple) entry, the headword is identical with the basic lexeme (neither with the basis (root) nor the particular anoikonym). The basic entry consists of three parts.

Part 1 of the basic (or multiple) entry (comprising more than five anoikonoms) gives a structured list of all anoikonoms containing the lexeme *baba / bába*, in the following format: a) non-prepositional anoikonoms – in sg., pl., with a concordant attribute, b) prepositional anoikonoms – in sg., pl., with a concordant attribute, ♦ anoikonoms with the headword in subordinate denominating relation, III – anoikonoms with possessive adjective derived from the basic lexeme. The subscript indicates the frequency (as well as the productivity) of the given phenomenon in the system.

Part 2 presents the list of objects. The subscript indicates the frequency of the object. We can see that the most frequent objects are hills, fields and forests.

Part 3 gives all the relevant toponomastic features; it is arranged according to structures, and within them according to types and motivations. It also gives dialectal and geolinguistic information. The entry also registers the particular lexical unit (BABA, BÁBA) in the Prague *Index of the Lexical Units of the Minor Place Names in Bohemia* (Olivová-Nezbedová; Matúšová 1991; further IPJČ) and refers to the summary entry.

For the entry BABA / BÁBA it may be as follows:

BABA _{159 f.} / **BÁBA** _{14 f.}

1 I a *Baba*₄₈, *Bába*₅; *Baby*₁₁; *Velká Baba*, *Krkatá baba*; *Zadní Baby*, *Malé baby*, *Malé Baby*, *Velké₂ baby*, *Velké₂ Baby*, *Panské₂ Baby*, *Jankovy/Silákovy/Votavovy Baby*; *Baby u Rokytne* **b** *K Babě*, *Na babě*₁₄, *Na Babě*₁₆, *Na Bábě*³, *Nad Babou*, *Pod Babou*₁₄, *U Baby*₃, *U báby*, *U Báb₂*, *V Babě₂*; *Na Babách*₁₃, *Na babech*, *Pod Babama*, *V babách₂*; *Na Pavlíckovej bábě*, *U Krkaté baby*
♦ **a** *Zmola na Babách*; *Díle k Babám*, *Díly u Baby₂*, *Doliny pod Babama*, *Záhonky pod Babama*
III ♦ **a** *Babina zmola*, *Bábina louka*, *Bábino křapčí*

2 a field₃₆, hill₂₇, forest₂₃, pasture₄, rock₄, gamekeeper's lodge, cross, bushes, airport, meadow, local part, place, footpath, pond, orchard, orchards, rocks, hillside **b** field₄₆, forest₂₄, hill₉, meadow₇, pasture₃, part of the cadastre₂, place₂, path, cross, crossroad, meadows, brook, orchards, valley, street, gardens ♦ **a** field₅, hill, forest, meadow, gorge, road

3 Anoikonoms arose by the toponymization of the appellative *baba / bába*, contain this appellative or possessive adjective derived from that appellative (*Bábino křapčí* [*Old woman's brushwood*]), or, as the case may be, anoikonym *Baba / Bába* (*Pod Babama* [*Under Old women*]).

Anoikonoms were recorded in the following structures:

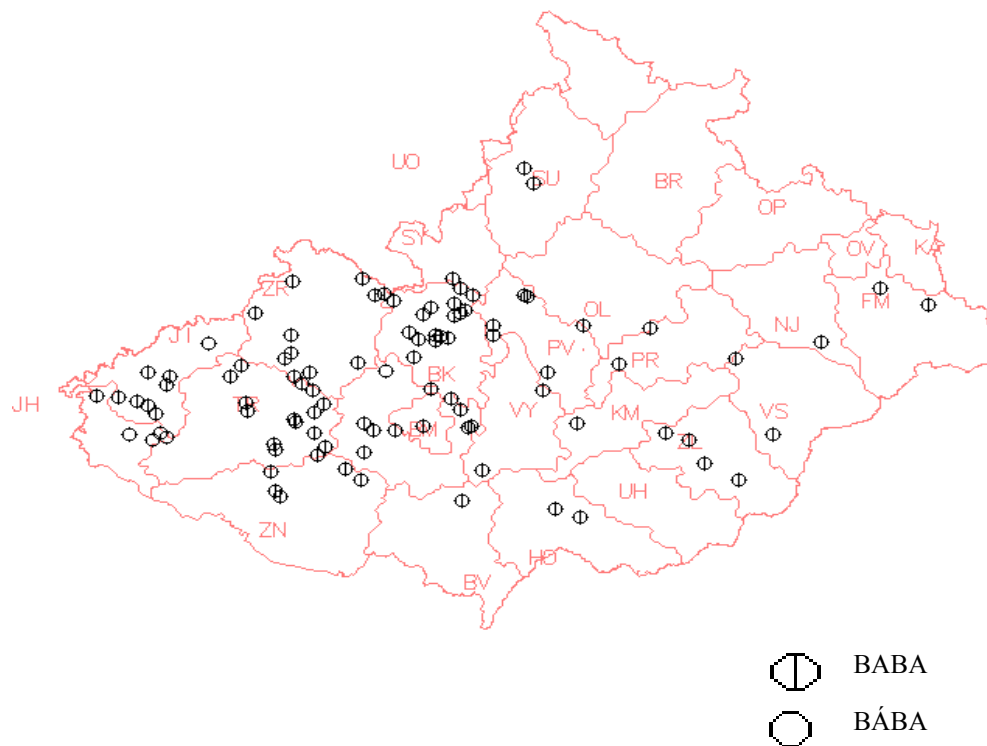
Single – word forms are the most prevalent, most often recorded in the singular (*Baba*, *Bába*). Most frequently they are deappellatives and they are used as personified names of hills and forests (usually on a hill) which resemble a (stocky) old woman. Metaphor was also used to denominate rocks and rock formations (*Baba / Krkatá baba* [*Old woman / Big-necked old woman*] in Lubě BK). Only rarely they denominate other objects: a cross (commonly called *baba*), a field, a pond. Plural forms (*Baby*) usually denominate fields, rock formations, rarely hills and forests. With some object, the motive of age, infertility or the retired farmer's property appears. – Hills named *Baba / Bába* were significant landmarks, and after them also fields (and forests) were denominated. Within this group it is difficult to decide whether the anoikonoms are of deappellative, or deproprial, origin. – A motive of the Slavic goddess *Baba* frequently appears as well. With regard to the fact that these anoikonoms (*Baba*, *Bába*) usually denominate hills and forests, it is highly probable that it was the resemblance to an (old) woman or some kind of metonymy (a pagan burial-ground, a place of sacrifices, situated, as a rule, on a hill or elevated grounds) which motivated these names. – Infrequent *attributive* anoikonoms are of two types:

The first type comprises adjectives expressing the location of the given object *Zadní Baby* [*Back Old Women*], its size *Malé/Velké Baby* [*Little/Big Old Women*], and ownership: individual (the field *Jankovy/Silákovy/Votavovy Baby* [*Janek's/Silák's/Votava's Old Women*]), or relating to a legal entity (the anoikonym *Panské Baby* [*Manorial Old Women*] for a field and a hill in Vevčice ZN indicating the former property of a large estate); an adjective can also be used metaphorically (*Krkatá baba* [*Big-necked Old Woman*] in Lubě BK is used to denominate a rock). This word-formational type is recorded mainly in the plural. The second, sporadic type of the attributive anoikonym comprises possessive adjective derived from the appellative *bába*; it indicates objects (forests, meadows, hillsides) “based on a user or an owner“, e.g., *Bábina lóka* [*Old Woman's meadow*] in Tišnov BO indicates a meadow upon which “the retired farmer's wives got worked”. Numerous *prepositional* anoikonims of the type *Na Babě* [*On the Old Woman*] are mostly represented by the preposition *na* [*on*] (frequently, it is an alternative anoikonym to a non-prepositional anoikonym, e.g., *Baba / Na Babě* [*Old Woman / On the Old Woman*] for a hill in Provodov ZL); also frequent, of course, is the preposition *under*, which arises from the location of the denominated objects (mostly fields, meadows and gardens). Anoikonims frequently reflect various stories. Anoikonims with the name *Baba / Bába* in the *subordinate* denominating relation, e.g., *Doliny pod Babama* [*Valleys under Old Women*] are quite sporadic. They indicate objects (mostly fields) situated near the objects called *Baba / Baby* [*Old Woman / Old Women*]. Quite sporadic is the type *preposition + adjective + noun* of the type *Na Pavlíčkovej Bábě* [*On Pavlíček's Old Woman*].

Anoikonims are concentrated in the hilly, not too high terrain of the western half of Moravia (anoikonims with the form *Bába/bába* are frequent at the western tip of Moravia). Anoikonims are rare in eastern Moravia and Silesia, where the word *baba* (*bába*) was frequently replaced by word *stařenka* for the denomination of old woman.

IPJČ

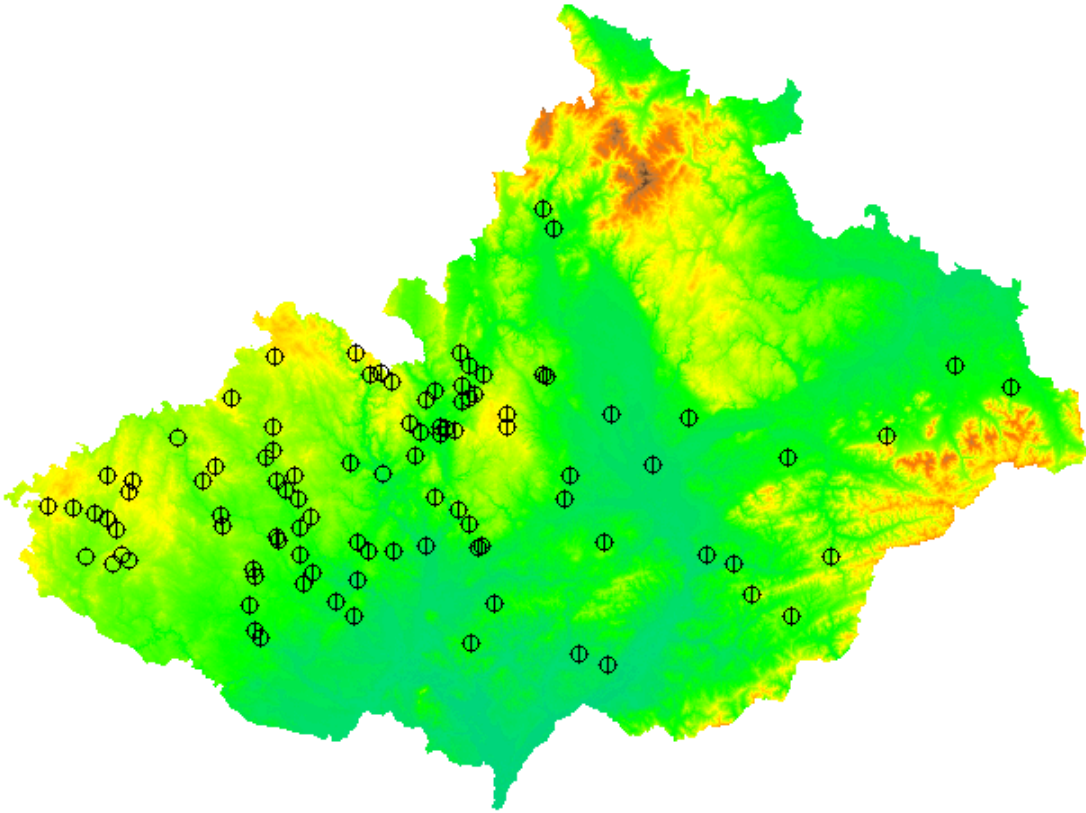
See: **-bab-/-báb-**



⊖ BABA

○ BÁBA

By projecting the anoikonyms on a schematic map we get an idea of the territorial spread of the anoikonyms across the territory of Moravia and Silesia. Projecting the anoikonyms on a special map, in this case a physical one, enables the onomastic interpretation of the resulting picture: it helps to reveal the direct connection of a proper name with a denominated object. In this way, the onymic map primarily reflects the area of denominated objects.



BABA / BÁBA on a physical map

In Moravia we started collecting anoikonyms later than in Bohemia; nevertheless, we succeeded in acquiring valuable material, which is especially important for furthering our knowledge of the history of our national language.

Note

This paper was compiled on the basis of the grant project (of the Czech Science Foundation) No. 405/08/0703 *Slovník pomístních jmen na Moravě a ve Slezsku II (teoretické a interpretační aspekty)*.

References

- Beneš, J. 1962. *O českých příjmeních* [On Czech Last Names]. Praha: ČSAV.
- Český jazykový atlas [Czech Linguistic Atlas] 1992–2005. 1st volume 1992. 2nd volume 1997. 3rd volume 1999. 4th volume 2002. 5th volume, 2005. Praha: Academia.
- Harvalík, Milan. 2004. *Synchronní a diachronní aspekty české onymie* [Synchronic and Diachronic Aspects of Czech Onyms]. Praha: Academia.

- Hosák, Ladislav, and Rudolf Šrámek. I, A-L 1970, II, M-Ž 1980. *Místní jména na Moravě a ve Slezsku* [Moravian and Silesian Place Names]. Praha: Academia.
- Machek, Václav. 1968. *Etymologický slovník jazyka českého* [Etymological Dictionary of the Czech Language]. Praha: Academia.
- Malec, Maria. 2003. *Słownik etymologiczny nazw geograficznych Polski* [Etymological Dictionary of the Geographic Names of Poland]. Warszawa: PWN.
- Matúšová, Jana (ed.). 2005. *Slovník pomístních jmen v Čechách* [Dictionary of Minor Place Names in Bohemia], I (A). Praha: Academia.
- Matúšová, Jana (ed.). 2006. *Slovník pomístních jmen v Čechách* [Dictionary of Minor Place Names in Bohemia], II (B-Bau). Praha: Academia.
- Matúšová, Jana (ed.). 2007. *Slovník pomístních jmen v Čechách* [Dictionary of Minor Place Names in Bohemia], III (Bav-Bíd). Praha: Academia.
- Olivová-Nezedová, Libuše, and Jana Matúšová. 1991. *Index lexikálních jednotek pomístních jmen v Čechách* [Index of Lexical Units of the Anonymyms in Bohemia]. Praha: Ústav pro jazyk český ČSAV.
- Olivová-Nezbedová, Libuše, Milena Knappová, Jitka Malenínská, and Jana Matúšová. 1995. *Pomístní jména v Čechách. O čem vypovídají jména polí, luk, lesů, hor, vod a cest* [Minor Place Names in Bohemia. What Do the Names of Fields, Meadows, Forests, Mountains, Waters and Roads Talk About]. Praha: Academia.
- Olivová-Nezbedová, Libuše, and Jitka Malenínská. 2000. *Slovník pomístních jmen v Čechách. Úvodní svazek* [Dictionary of Minor Place Names in Bohemia. Introductory Volume]. Praha: Academia.
- Osnoven system i terminologija na slovenskata onomastika* [Basic System and Terminology of Slavic Onomastics]. 1983. Skopje: Makedonska akademija na naukite i umetnostite.
- Pleskalová, Jana. 1992. *Tvoření pomístních jmen na Moravě a ve Slezsku* [Formation of Anonymyms in Moravia and Silesia]. Jinočany: H&H.
- Pleskalová, Jana. 1988. *Tvoření nejstarších českých osobních jmen* [Formation of the Oldest Czech Personal Names]. Brno: Masarykova Univerzita.
- Profous, Antonín. 1947–1960. *Místní jména v Čechách (Place Names in Bohemia)* Vol. 1, 2, 3, 4 (with Jan Svoboda), 5 (by Jan Svoboda and Vladimír Šmilauer). Praha: Nakladatelství Československé akademie věd.
- Svoboda, Jan. 1964. *Staročeská osobní jména a naše příjmení* [Old Czech Personal Names and our Last Names]. Praha: Nakladatelství Československé akademie věd.
- Šrámek, Rudolf. 1999. *Úvod do obecné onomastiky* [Introduction into General Onomastics]. Brno: Masarykova Univerzita.
- Šrámek, Rudolf. 2007a. *Beiträge zur allgemeinen Namentheorie*. Vídeň: Praesens Verlag.
- Šrámek, Rudolf. 2007b. Onomastika [Onomastics]. In: *Kapitoly z dějin české jazykovědné bohemistiky* [Chapters from the History of Czech Linguistic Studies]. Praha: Academia.
- Zierhoffer Zofia, and Karol Zierhoffer. 1987. *Nazwy miast Wielkopolski* [Names of Places in Great Poland (Wielkopolska) Region]. Poznań: Wyd. Pozn.

Milena Šípková
 Academy of Sciences of the Czech Republic
 Institute of the Czech Language, Department of Dialectology
 Veverí 97
 602 00 Brno
 CZECH REPUBLIC
 sipkova@iach.cz