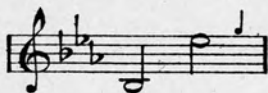
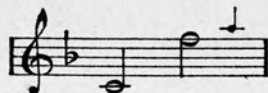


mom

No1 in Eb



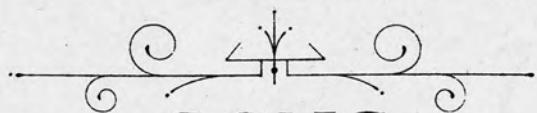
No2 in F



No3 in G



BY MY FIRESIDE



SONG



WORDS BY

HOWARD JOHNSTON



MUSIC BY



GITZ RICE

PRICE 40 CENTS NET

EXCEPTING CANADA AND FOREIGN COUNTRIES

CHAPPELL-HARMS, INC.

185 MADISON AVE.

NEW YORK, N. Y.

FOR ALL OTHER COUNTRIES

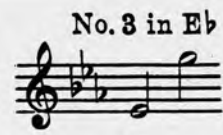
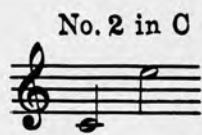
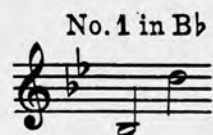
CHAPPELL & Co., LTD.

LONDON

SYDNEY

PRINTED IN U.S.A.

THE BALLAD SENSATION OF THE SEASON



ONE LITTLE DREAM OF LOVE SONG

Words by
HAROLD SIMPSON

Music by
WESTELL GORDON

REFRAIN

p

One lit - tle dream of Par - a - dise, One lit - tle smile from

p

cresc. molto

lov - ing eyes, One lit - tle gold - en hour with you In the

cresc. molto

p

land where our dreams come true. One lit - tle place where laugh - ter lies, We

Copyright 1921 by Chappell & Co., Ltd.

Chappell - Harms Inc., 185 Madison Ave., N.Y. C.

BY MY FIRESIDE.

Song.

Words by
HOWARD JOHNSTON.

Music by
GITZ RICE.

Andante moderato.

VOICE.

PIANO.

At the close of day I find Oft a dis-con-ten-ted mind Seems to be with me to stay

'Till I wend my homeward way. As I en-ter thro' my door Hap-pi-ness is mine once more;

poco rit. *rall*

To the ones that I love so Then I whis-per low.

colla voce *rall*

REFRAIN.
a tempo

Ev - 'ry hour is heav-en by my fire - side, When the shades of

p a tempo

ev - en ho-ver nigh; God is good to let us be to-ge - ther,

ten

p piacere *a tempo* *rit*

The kiddies, you and I.

colla voce p *mf a tempo* *rit*

a tempo

When the day is growing late As I reach my gar-den gate, Lit-tle footsteps I can hear;

p a tempo

An-gel fa-ces soon ap-pear. In the win-dow I can see Someone else who waits for me.

p

poco rit. *rall.*

As your arms a-round me cling My heart seems to sing.

colla voce *rall.*

REFRAIN.

a tempo

Ev - 'ry hour is hea-ven by my fire - side, When the shades of

p a tempo

ev - en ho-ver nigh; God is good to let us be to - ge - ther,

ten.

p a piacere rit.

The kid - dies, you and I.

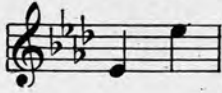
p colla voce rit.

f

tea * *tea* * *tea* *

A SONG OF UNUSUAL CHARM

No. 1 in A \flat



No. 2 in B \flat



No. 3 in C



THERE'S A SONG IN MY HEART

SONG

Words and Music by
BERNARD HAMBLEN

REFRAIN

mp Steadily

For the riv - er is al-ways sing-ing, As it flows to-join the sea;

mp *R.H.* *cresc.*

Sing - ing of love and you, dear, And our dream-days of mem-o - - ry; So my

poco rall. a tempo

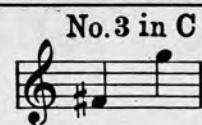
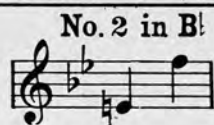
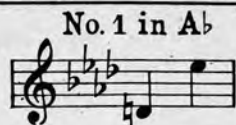
thoughts to-you are wing-ing As the sun's last rays de - part, For the

molto

song of the river is love's melody,
And there's always a song in my heart.

Copyright 1923 by Chappell & Co. Ltd.
Chappell-Harms Inc. 185 Madison Ave. New York

ANOTHER GEM FROM THE PEN OF THIS GIFTED COMPOSER



In The Garden Of To-morrow

SONG

Words by
GEO. GRAFFE Jr

Music by
JESSIE L. DEPPEN

REFRAIN

In the gar-den of to-mor row, Will the ros-es be more fair?—

Will we find re-lief from sor - row, Will there be more sun-shine th - e - re?

For each love flow'r that will blos - som, Some will die and fade a - way. —

REFRAIN

In the garden of to-morrow,
Will the roses be more fair?
Will we find relief from sorrow,
Will there be more sunshine there?
For each love flow'r that will blossom,
Some will die and fade away.
Oh! I'd so much rather,
All my love flow'rs gather,
From the garden of to-day.

Copyright 1924 by Chappell & Co. Ltd.
Published by Chappell-Harms Inc. New York

CHAPPELL - HARMS INC., 185 Madison Ave., New York

THREE LOVE BALLADS
 with flowing melodies that
 will appeal to all —

The Far Away Bells

Refrain *mf*
 The far-a-way bells are ring-ing · My thoughts of love and you; And the

Come Back in Dreams

Refrain *mp a tempo*
 Come back in dreams when the twi-light is fall-ing, Come back in dreams to

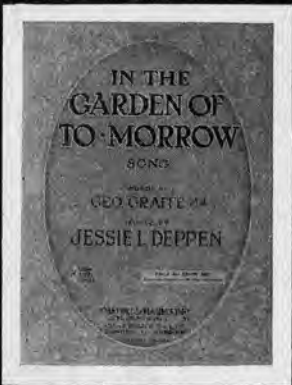
A Night of Love

Refrain *p-mf a tempo*
 When shad-ows fall, I still re-call

OTHER FAMOUS SONG HITS
 THE BELLS OF ST. MARY'S
 BROWN BIRD SINGING
 ONE LITTLE DREAM OF LOVE
 ROSES OF PICARDY
 THE WORLD IS WAITING FOR THE SUNRISE
 THE SONG OF SONGS

ORDER YOUR COPIES TO DAY
 FROM YOUR LOCAL MUSIC DEALER

Every once in a while, songs are written from which there is no avenue of escape. They haunt you. Go where you will, you take them with you. Do what you may, they cannot be silenced. Like a beautiful phrase, they can never be forgotten. Such songs are, "In The Garden Of To-Morrow" and "That Little World Is Mine."



IN THE GARDEN OF TO-MORROW

Music by
JESSIE L. DEPPEN

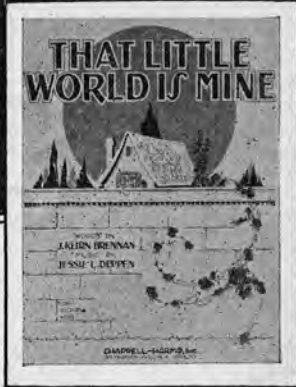
Words by
GEO. GRAFFE Jr.
REFRAIN

In the garden of to-mor-row, Will the ros-es be more fair?
Will we find re-lief from sor-row,
Will there be more sun-shine th-e-re? For each love flower that will
Some will die and fade a-way,

Copyright 1924 by Chappell & Co. Ltd.
Published by Chappell-Harms Inc. New York

OTHER POPULAR FAVORITES

- "ROSES OF PICARDY"
- "THE WORLD IS WAITING FOR THE SUNRISE"
- "THE SONG OF SONGS"
- "ONE LITTLE DREAM OF LOVE"
- "COME BACK IN DREAMS"
- "THE FAR-AWAY BELLS"
- "I LOOK INTO YOUR GARDEN"
- "A BROWN BIRD SINGING"
- "VALLEY OF ROSES"



THAT LITTLE WORLD IS MINE

Words by
J. KEIRN BRENNAN
Ukulele arr. by May Singht Evesen

Al-Orig. Medium Put Ukulele Capo on 1st fret
Tune Ukulele A D F# B

Music by
JESSIE L. DEPPEN

Refrain
p a tempo
The world rolls by, but what care I In my own world of bliss; With-
p dolce a tempo
in four walls where laugh-ter falls, As sweet as lips I kiss! A
home of dreams where love-light gleams, In eyes like warm sun
shine; A world as true as God made you! And

Copyright MCMXXVI by HARMS Inc. N. Y.
Published by Chappell-Harms Inc. New York