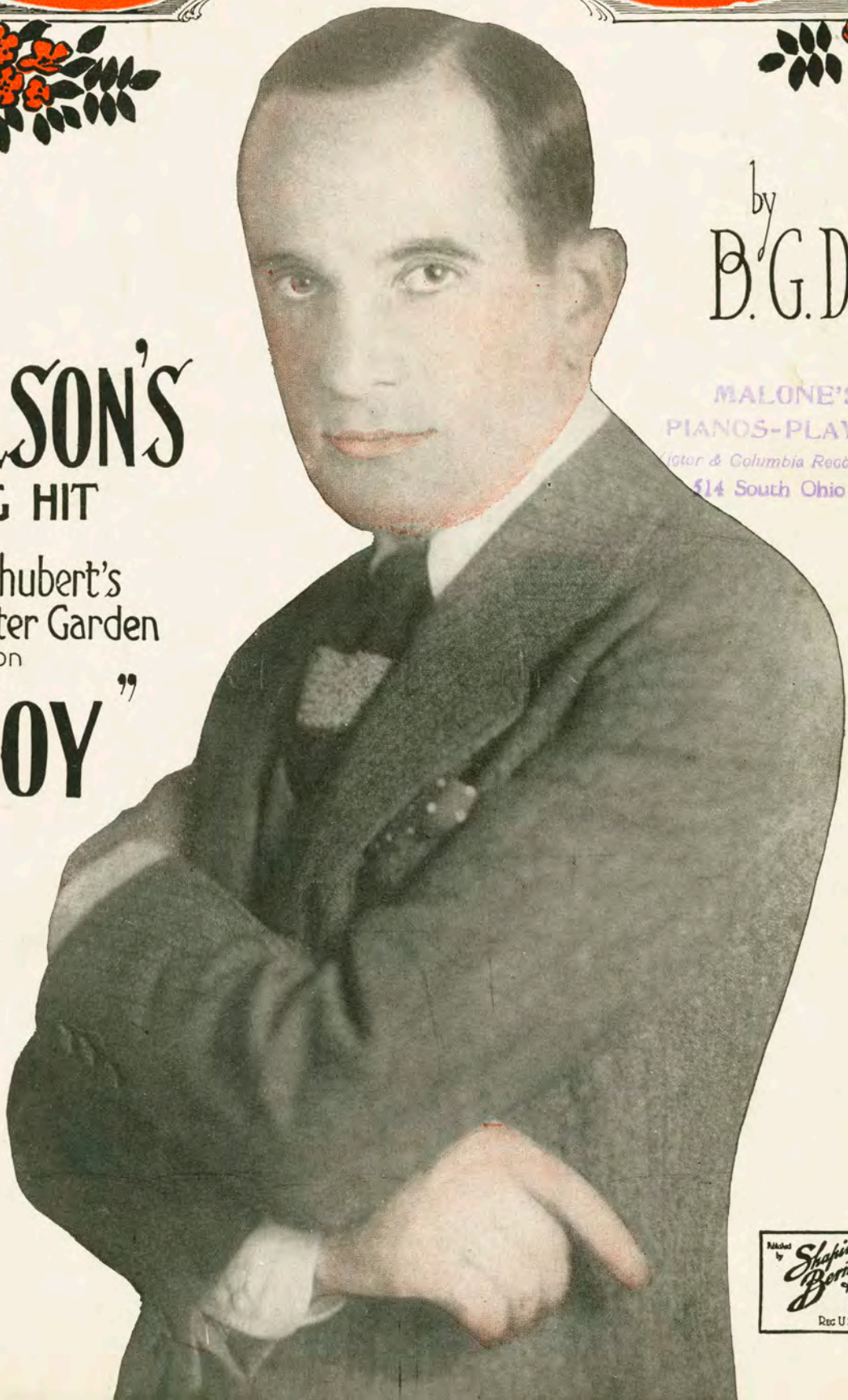


IF YOU KNEW
SUSIE
 LIKE I KNOW SUSIE



AL. JOLSON'S
 BIG SONG HIT
 IN
 The Messrs Shubert's
 New York Winter Garden
 Production
"BIG BOY"

by
 B. G. De Sylva

MALONE'S MUSIC SHOP
 PIANOS-PLAYERS-VICTROLAS
 Victor & Columbia Records, Sheet Music, Musical Mass.
 414 South Ohio St. : Sedalia, Mo.

MADE IN U.S.A.

MUSIC PUBLISHERS
 COR. BROADWAY & 47th STREET
 New York
 Reg. U.S. Pat. Off.

Try this over on your Piano

The Melody That Made You Mine

Words by
CLIFF FRIENL

Uke in Bb

With Piano

Tune Thus

F Bb D G

Music by
W. C. POLLA

Refrain

It was a moon - light, Beau-ti-ful June night, We waltzed this

sweet mel-o - dy, I held you near me Called you "my dear -

ie" And you whis-pered that you loved me, Mu-sic en-tran -

cing, Kept us a dan - cing, Seemed like a mes-sage di-

Arr. for the Uke. by Dick Konter.

Copyright MCMXXV by Shapiro, Bernstein & Co. Inc. Cor. Broadway & 47th Street New York.
Propiedad Asegurada Para La Republica Mexicana MCMXXV Todos Los Derechos Reservados.
Derechos De Reproduccion Reservados En Cuba y Sud y Central America.

International Copyright Secured.

ALL RIGHTS RESERVED.
Including Public Performance For Profit.

Made in U. S. A.

Complete Copies may be had where you bought this

Uke in C
 With Piano
 Tune. Thus
 G C E A

IF YOU KNEW SUSIE

(Like I Know Susie)

By B. G. De SYLVA

Moderato

Piano

VOICE

I have got a sweet-ie known as Su - sie In the words of
 Su - sie has a per - fect rep - u - ta - tion No one ev - er

Shake-speare she's a "wow" Though all of you
 saw her on a spree No - bo - dy knows

Arr. for the Uke. by "Dick Konter"

Copyright MCMXXV by Shapiro, Bernstein & Co. Inc. Cor. Broadway & 47th Street, New York
 Propiedad Asegurada Para La Republica Mexicana MCMXXV Todos Los Derechos Reservados
 Derechos De Reproduccion Reservados En Cuba y Sud y Central America

International Copyright Secured

ALL RIGHTS RESERVED
 Including Public Performance For Profit

Made in U. S. A.

May know her, too I'd like to shout right now: _____
 Where Su-sie goes No - bo - dy knows, but me: _____

CHORUS

If you knew Su-sie like I know Su-sie Oh!

p-f

Optional

Oh! Oh! what a girl! - There's none so clas - sy as
 She wears long tress - es and

this fair las-sie Oh! Oh! Ho - ly Mos-es!
 nice tight dress-es Oh! Oh! What-a fu-ture

How to Play MELODY on the Uke

FERERA and FRANCHINI'S
 TWO COLOR METHOD
UKELELE SOLOS

NO TEACHER KNOWLEDGE OF MUSIC REQUIRED

Price 75¢ Postpaid

what a chas - sis! We went ri - ding She did - n't balk
she pos - ses - ses, Out in pub - lic How she can yawn

Back from Yon - kers I'm the one that had to walk! If
In a par - lor You would think the war was on If

you knew Su - sie like I know Su - sie Oh!
you knew Su - sie like I know Su - sie Oh!

Oh! what a girl. — If girl. —
Oh! what a girl.

mf *sf*

TRY THESE OVER YOUR MUSIC DEALER CARRIES THESE SONG HITS Every copy contains a **UKELELE** part

AT THE END OF THE ROAD

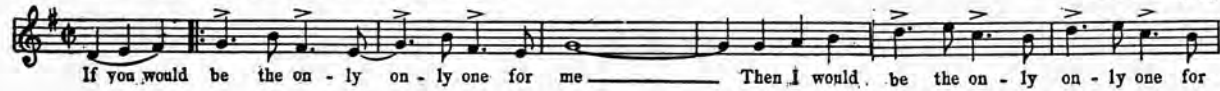
A New Ballad by the Writers of "INDIANA"



Copyright MCMXXIV by Shapiro, Bernstein & Co. Inc.

THE ONLY ONLY ONE (for me)

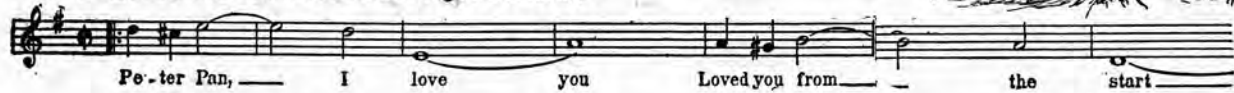
The dance craze of the day.



Copyright MCMXXIV by Shapiro, Bernstein & Co. Inc.

PETER PAN (I Love You)

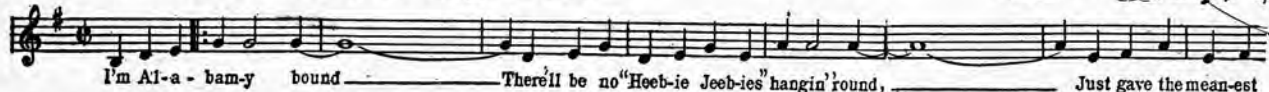
Dedicated to Miss Marilyn Miller



Copyright MCMXXIV by Shapiro, Bernstein & Co. Inc.

ALABAMY BOUND

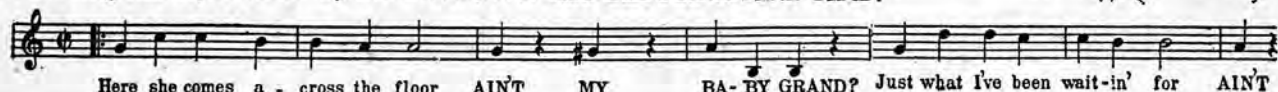
AL. JOLSON'S Big Hit.



Copyright MCMXXV by Shapiro, Bernstein & Co. Inc.

AIN'T MY BABY GRAND?

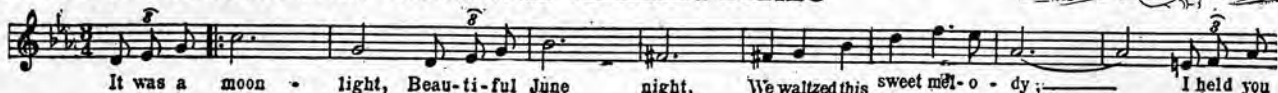
A Toe-tickling mirth provoker by the writers of "WHY DID I KISS THAT GIRL?"



Copyright MCMXXV by Shapiro, Bernstein & Co. Inc.

THE MELODY THAT MADE YOU MINE

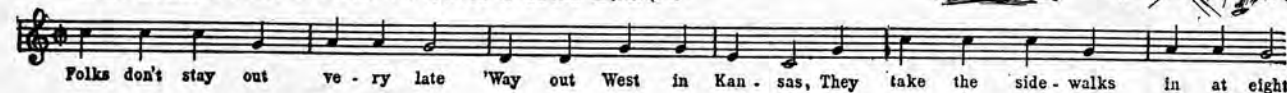
VINCENT LOPEZ' Waltz Hit in the "GREENWICH VILLAGE FOLLIES"



Copyright MCMXXV by Shapiro, Bernstein & Co. Inc.

'WAY OUT WEST IN KANSAS

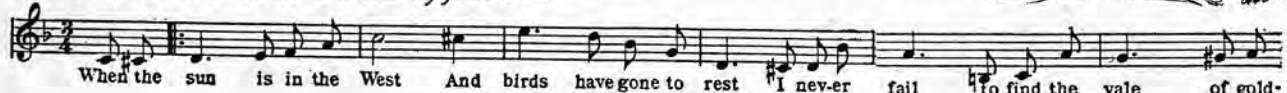
The Radio hit — lots of extra choruses.



Copyright MCMXXIV by Shapiro, Bernstein & Co. Inc.

THE VALE OF GOLDEN DREAMS

A Ballad with a real appeal



Copyright MCMXXV by Shapiro, Bernstein & Co. Inc.

THE GEM America's Standard **Dance Folio**
for Piano Solo only **1925** Price 50¢ Postpaid

The outstanding Waltz of the year *Nightingale* — with whistling effect