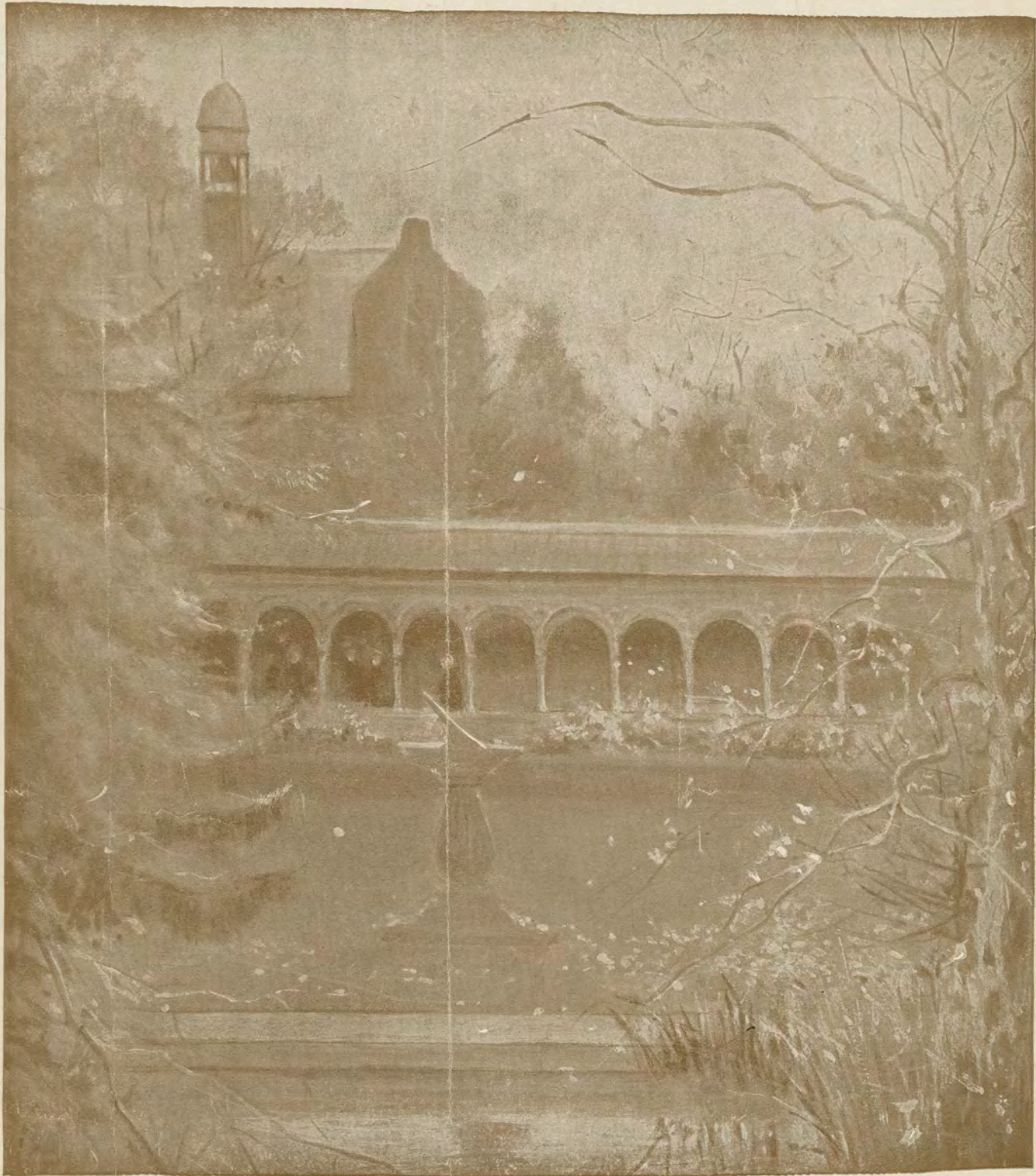


In a Monastery Garden

(Albert W. Ketelbey)



CHARACTERISTIC
INTERMEZZO

MADE IN U. S. A.

J. H. LARWAY,
14, WELLS STREET, OXFORD STREET,
LONDON, W.

REPRINTED AND PUBLISHED BY
HARMS Inc., New York,

ORGAN
VIOLIN AND PIANO
PIANO SOLO
PRICE 2/- NET
(For Arrangements
see Inner Title)

All Rights Reserved.

By arrangement with J. H. LARWAY, Music Publisher, London. Owner of Copyright.

Dedicated to my friend Signor Enrico Scoma.

IN A MONASTERY GARDEN.

Characteristic Intermezzo.

ALBERT W. KETELBEY.

Andante espressivo. ♩ = 76.

molto legato

PIANO.

mf *sonore*

con Ad.

f

p

poco rit.

SONG OF THE BIRDS.

frum

frum

frum

marcato melodia

con Ad.

frum

poco rit. *p* *pp*

L.H. Sopra L.H. Sopra *ped.* *

Detailed description: This system contains the first two measures of the piece. The piano part features a descending eighth-note pattern in the right hand and a similar pattern in the left hand. The grand staff includes a vocal line with notes and rests. Dynamics include *poco rit.*, *p*, and *pp*. Performance instructions include *ped.* and an asterisk. Fingerings are indicated with numbers 1, 3, 5, and 2. A trill is marked above the final note of the vocal line.

Più mosso.

mf

con ped.

Detailed description: This system contains measures 3 and 4. The tempo is marked **Più mosso.** The piano part continues with the eighth-note pattern. Dynamics include *mf* and *con ped.*

accel. e cresc. *rall.* *ten.* *pp* *rit.*

Detailed description: This system contains measures 5 and 6. The piano part features a more complex rhythmic pattern. Dynamics include *accel. e cresc.*, *rall.*, *ten.*, *pp*, and *rit.*

a tempo *mf*

Detailed description: This system contains measures 7 and 8. The tempo is marked *a tempo*. The piano part features a steady eighth-note accompaniment. Dynamics include *mf*.

accel. e cresc. *rall.* *pp* *rit.* *pp*

ten

Detailed description: This system contains measures 9 and 10. The piano part features a complex rhythmic pattern. Dynamics include *accel. e cresc.*, *rall.*, *pp*, *rit.*, and *pp*. A *ten.* (tension) marking is present above the piano part.

Tempo I.

p marcato melodia
con Sord.

poco rit.

a tempo

The first system of the piano accompaniment features a treble clef staff with a key signature of one flat and a bass clef staff. The music consists of chords in the treble and a rhythmic, eighth-note pattern in the bass.

The second system continues the piano accompaniment with similar chordal textures in the treble and eighth-note patterns in the bass.

The third system of the piano accompaniment includes the instruction *poco rit.* and ends with a *Red.* (Reduction) marking. The bass line has a '5' written below it.

CHANT OF THE MONKS.

Ky - ri e E - le - i - son, Ky - ri -

The first part of the chant is written in a single staff with a treble clef. The tempo is marked *Religioso. e sostenuto.* and the dynamic is *P (a là Organ)*. Below the staff, there are bell markings: *Bell.* and *con Red. 8va lower*.

- e E - le - i - son, E - lei - son.

The second part of the chant continues in the same staff. It includes the instruction *dim.* and bell markings: *Bell.* and *8va lower*.

Ky - ri - e, E - le - i - son, Ky - ri -

mf

L.H.

Bell.

sva lower

sva lower

-e, E - le - i - son, E - lei - son.

dim.

pp

Tempo I.

p

1 2 4 5

con Fed.

poco rit.

5 1 2 1 2 5

molto legato

pp a tempo

mf

poco rit.

pp a tempo

8va

Ky - ri - e, E - le - i - son.

mf sost.

Bell.

con *Red.* *8va* lower.....

Red. * Bell. * *Red.* *

Ky - rie, Ky - rie, E - lei - son.

allargando

f Bell. *ff*

8va lower.....

simile

lunga pausa

sf *pp*

