

MS

MY SPRINGTIME THOU ART

Blossom Time

A MUSICAL PLAY IN THREE ACTS



by
DR. A.M. WILLNER AND HEINZ REICHERT
AMERICAN VERSION AND LYRICS BY

Dorothy Donnelly

MUSIC ADAPTED FROM MELODIES OF
FRANZ SHUBERT AND HEINRICH BERTE'

by
Sigmund Romberg
BY ARRANGEMENT WITH M. WITMARK & SONS.



ACT I		
THREE LITTLE MAIDS	Trio	.60
SERENADE	Quartette	.60
(Introducing the famous Schubert Serenade)		
MY SPRINGTIME THOU ART60
(Solo and Ensemble)		
SONG OF LOVE60
(Solo and Duet)		
THERE IS AN OLD VIENNA TOWN60
(Solo and Ensemble) (Finale, Act I.)		
ACT II		
LOVE IS A RIDDLE	Sextette	.60
LET ME AWAKE	Duet	.60
TELL ME DAISY	Duet	.60
ONLY ONE LOVE EVER FILLS THE HEART	Duet	.60
ACT III		
KEEP IT DARK	Quartette	.60
PEACE TO MY LONELY HEART60
(Ensemble)		
Selection, Piano Solo, \$1.00 • Intermezzo Serenade, .75 • Waltz .75		

Leo Feist inc.

1629 BROADWAY • NEW YORK

BY ARRANGEMENT WITH
KARCZAG PUBLISHING CO.
NEW YORK

MADE IN U.S.A.

harrie

MY SPRINGTIME THOU ART!

QUINTET

(SCHOBER, VOGL, VON SCHWIND, KUPELWEISER and SCHUBERT)

Music Adapted from

Melodies of

FRANZ SCHUBERT and
HEINRICH BERTE'

By

SIGMUND ROMBERG

Lyric by
DOROTHY DONNELLY

Allegro Moderato (SCHOBER)

Birds are dart-ing, Buds are start-ing, Hand in hand go

mf

(VOGL)

Girl and Boy Ver-y charm-ing, But more calm-ing, Is the wine-cup's gold-en joy.

(VON SCHWIND) (KUPELWEISER)

I would roam From my home Far a-cross the sea. My joy best

Copyright MCMXVI by Ludwig Doblinger (Bernhard Herzmansky) Leipzig

Copyright MCMXXI by Karczag Publishing Co., Inc. New York

Published by LEO. FEIST, Inc. New York

By arrangement with Karczag Publishing Co., Inc.

"Public Singing Rights Positively Restricted and Reserved"

Authorized for sale in Countries of North America but not elsewhere

(SCHÖBER)

is ex-pressed In my po-et-ry. What more roy-al com-rades loy-al

(SCHUBERT)

Great-er bless-ing can you tell? Cease your pond'-ring Wine and Wan-d'ring

(SCHUBERT)

Friend-ship, Art All lose their spell. Oh gen-tle A-pril who bless-es, The
Not too slow

earth with ca-ress-es, Be kind-ly and give me The girl of my

heart, Up-on her soft maid-en's bo - som Let sweet li - lacs blos - som, While

(SCHOBER)

I sing her prai - ses "My spring-time thou art!" Oh how the

(SCHOBER and SCHUBERT)

world laughs in spring - time, - 'Tis ev - er known as Love's own

(VOGL)

world laughs in spring - time, - 'Tis ev - er known as Love's own

(VON SCHWIND)

world laughs in spring - time, - 'Tis ev - er known as Love's own

(KUPELWEISER)

ring - time, Why are we wait - ing? The birds are mat - ing, In .ev -'ry

ring - time, Why are we wait - ing? The birds are mat - ing, In ev -'ry

ring - time, Why are we wait - ing? The birds are mat - ing, In ev -'ry

sva......

Detailed description: This system contains four staves. The top three staves are vocal parts (Soprano, Alto, and Bass) with lyrics. The bottom two staves are piano accompaniment. The music is in G major and 4/4 time. The piano part features chords and moving lines in both hands. A dynamic marking of *sva.* (sforzando) is present above the piano part.

tree they chirp and sing — And in the green for - est

tree they chirp and sing — And in the green for - est

tree they chirp and sing — And in the green for - est

8.....

Detailed description: This system contains four staves. The top three staves are vocal parts with lyrics. The bottom two staves are piano accompaniment. The music continues in G major and 4/4 time. A dynamic marking of *8.* (piano) is present above the piano part.

bow - ers, - We'll twine a wreath of snow - y flow - ers, - Why do we

bow - ers, - We'll twine a wreath of snow - y flow - ers, - Why do we

bow - ers, - We'll twine a wreath of snow - y flow - ers, - Why do we

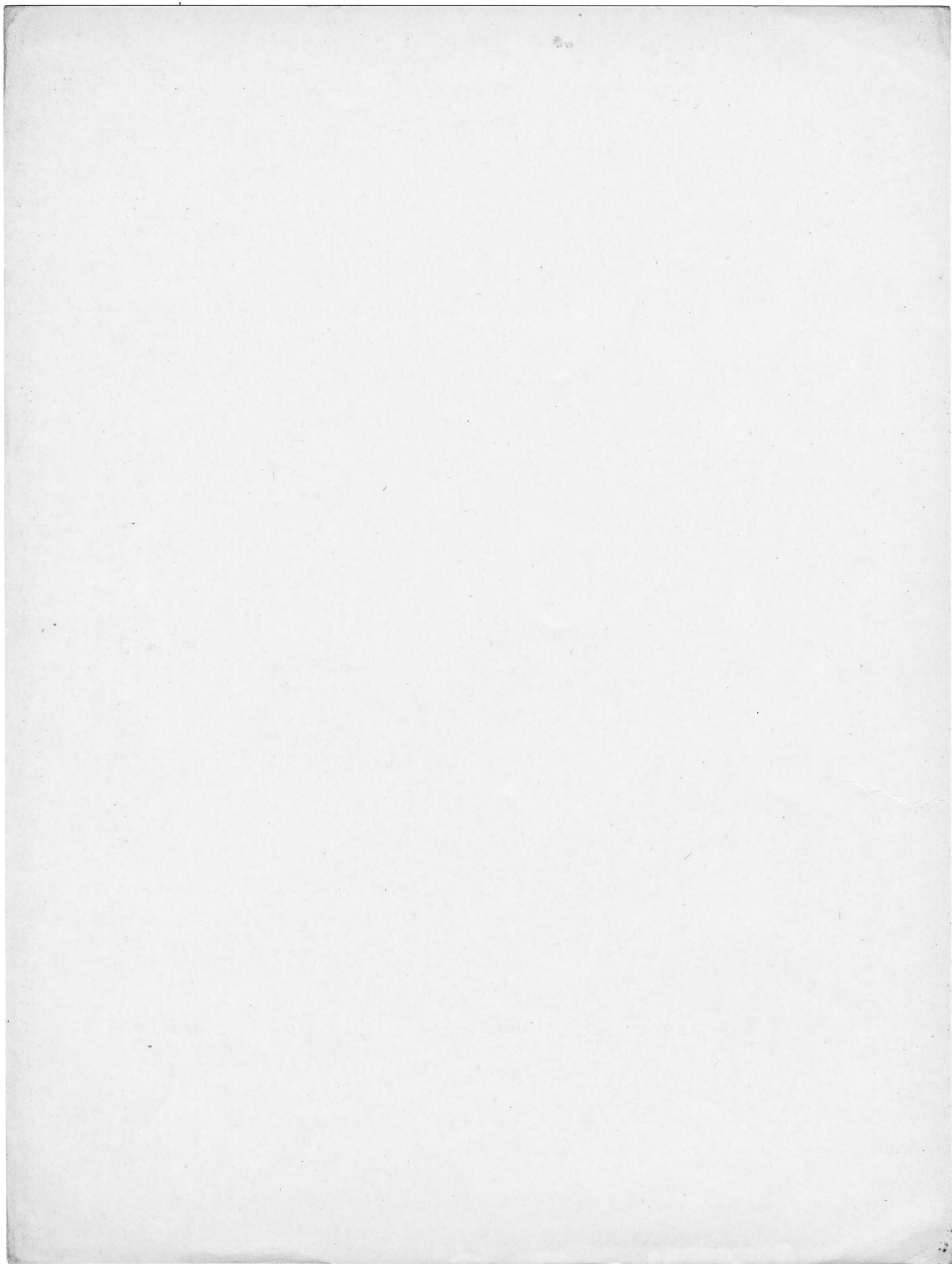
bow - ers, - We'll twine a wreath of snow - y flow - ers, - Why do we

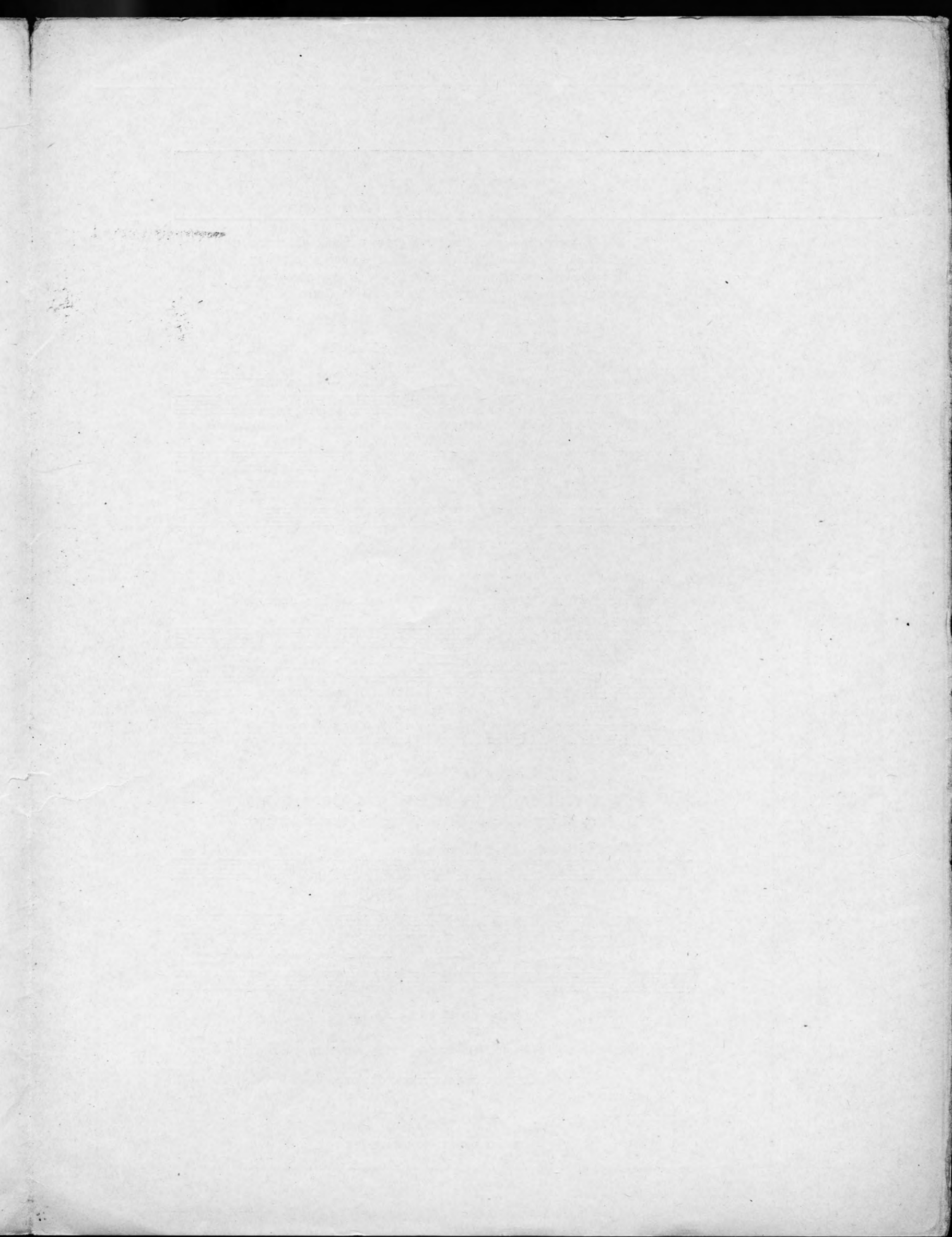
rit.
tar - ry? - It's time to mar - ry, - Come pluck the blos - soms of the Spring.

rit.
tar - ry? - It's time to mar - ry, - Come pluck the blos - soms of the Spring.

rit.
tar - ry? - It's time to mar - ry, - Come pluck the blos - soms of the Spring.

rit.
tar - ry? - It's time to mar - ry, - Come pluck the blos - soms of the Spring.





THREE BEAUTIFUL STANDARD SONGS

Here is a group of songs that have proven their right to be classified as "songs for the ages." Always in demand, they are loved wherever music is a factor in the culture and entertainment of the family. They belong on YOUR piano.

LOVE, HERE IS MY HEART

Words by Adrian Ross

Music by Lao Silesu

REFRAIN

p *espressivo molto sostenuto*

Love, here is my heart, One tender re - frain; Yours if you e - cho the tune,

L. H. *simile*

p *espressivo molto sostenuto*

ten.

The musical score for the refrain of "Love, Here is My Heart" is presented in two systems. The first system shows the vocal line in treble clef and the piano accompaniment in bass clef. The vocal line begins with the lyrics "Love, here is my heart, One tender re - frain; Yours if you e - cho the tune," and features a tenuto mark (*ten.*) over the final phrase. The piano accompaniment includes a left-hand part marked *L. H.* and *simile*, and a right-hand part marked *p* *espressivo molto sostenuto* and *ten.*

Copyright by LEO FEIST, Inc., New York

ISLE D'AMOUR

Words by Earl Carroll

Music by Leo Edwards

Valse moderato con espress.

I know an Is - land, my dear, An Is - land to where lov - ers

The musical score for "Isle d'Amour" is presented in two systems. The first system shows the vocal line in treble clef and the piano accompaniment in bass clef. The vocal line begins with the lyrics "I know an Is - land, my dear, An Is - land to where lov - ers". The piano accompaniment is in 3/4 time and features a waltz-like melody.

Copyright by LEO FEIST, Inc., New York

WHEN YOU LOOK IN THE HEART OF A ROSE

Words by Marian Gillespie

Music by Florence Methven

REFRAIN Moderato tranquillo espressivo

Dear lit - tle rose, with your heart of gold,

mf *a tempo*

The musical score for the refrain of "When You Look in the Heart of a Rose" is presented in two systems. The first system shows the vocal line in treble clef and the piano accompaniment in bass clef. The vocal line begins with the lyrics "Dear lit - tle rose, with your heart of gold,". The piano accompaniment includes a left-hand part marked *mf* and *a tempo*, and a right-hand part.

Copyright by LEO FEIST, Inc., New York

Every Music Lover Will Want These Song Classics for His Library

On sale at your music dealer



Leo Feist inc.



1629 BROADWAY • NEW YORK