

MR. ALBERT CAMPBELL

Presents
at the Whitney Opera House, Chicago, Ill.

LOWER BERTH THIRTEEN

FOUNDED ON A STORY BY
HOWARD WHITNEY SWOPE

A Farce with Music



Book & Lyrics by

COLLIN DAVIS

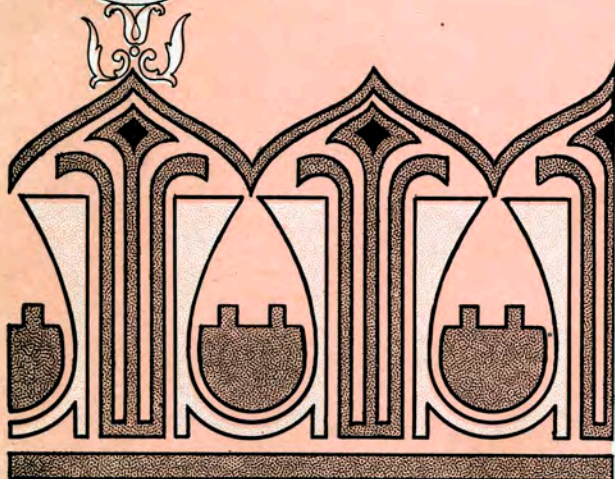
AND

ARTHUR GILLESPIE



Music by

JOS. E. HOWARD



"I'll Take You Home To-morrow If You'll Take Me Home To-night".....	60
"Dearie, You and I" (Duet).....	60
"Dublin"	60
"Riding on the Choo-Choo Train".....	60
"When Nancy Brown Kissed Hiram Green Good-bye"	60
"Laugh To-day and Cry To-morrow".....	60
"Zig Zag Rag".....	60
"My Love is Like a Rose".....	60
"My Scare Crow Maidie".....	60
"Just Keep A Dreaming".....	60
"In a Bungalow".....	60

STARMER



PUBLISHED BY
CHAS. K. HARRIS
NEW YORK
CHICAGO LONDON



Dublin.

Lyric by
DAVIS & GILLESPIE.

Music by
JOS. E. HOWARD.

Allegro.

The piano introduction consists of two staves of music in 2/4 time, featuring a key signature of one flat (B-flat). The music is marked with a forte 'f' dynamic. The right hand plays a series of chords and moving lines, while the left hand provides a steady accompaniment.

Oh — sweet-heart there's a jour - ney I've of - ten wished to
I have got a new po - si - tion Fif - teen a week it

take, If — we could go to Dub - lin A for - tune we could
pays, We can live on twelve con - tent - ed Save three for rain - y

make, Some say the road is rock - y But dar - lin' that ain't
days, One dol - lar starts a bank book How it will grow you'll

3

Lower Birth 13.

Copyright MCMX by Chas. K. Harris.
Rights for Mechanical Instruments Reserved.
International Copyright Secured.

true, The way that we will trav-el Is Sun-shine Av-en-ue.
 see, They ad-ver-tize we keep the bank And they will keep the key.

Refrain.

Dub - lin, Dub - lin, let's go to Dub - lin Sweet-heart put

on your hat, I'd not be troub - lin' but

my heart is bub - blin', For Dub - lin in a flat,



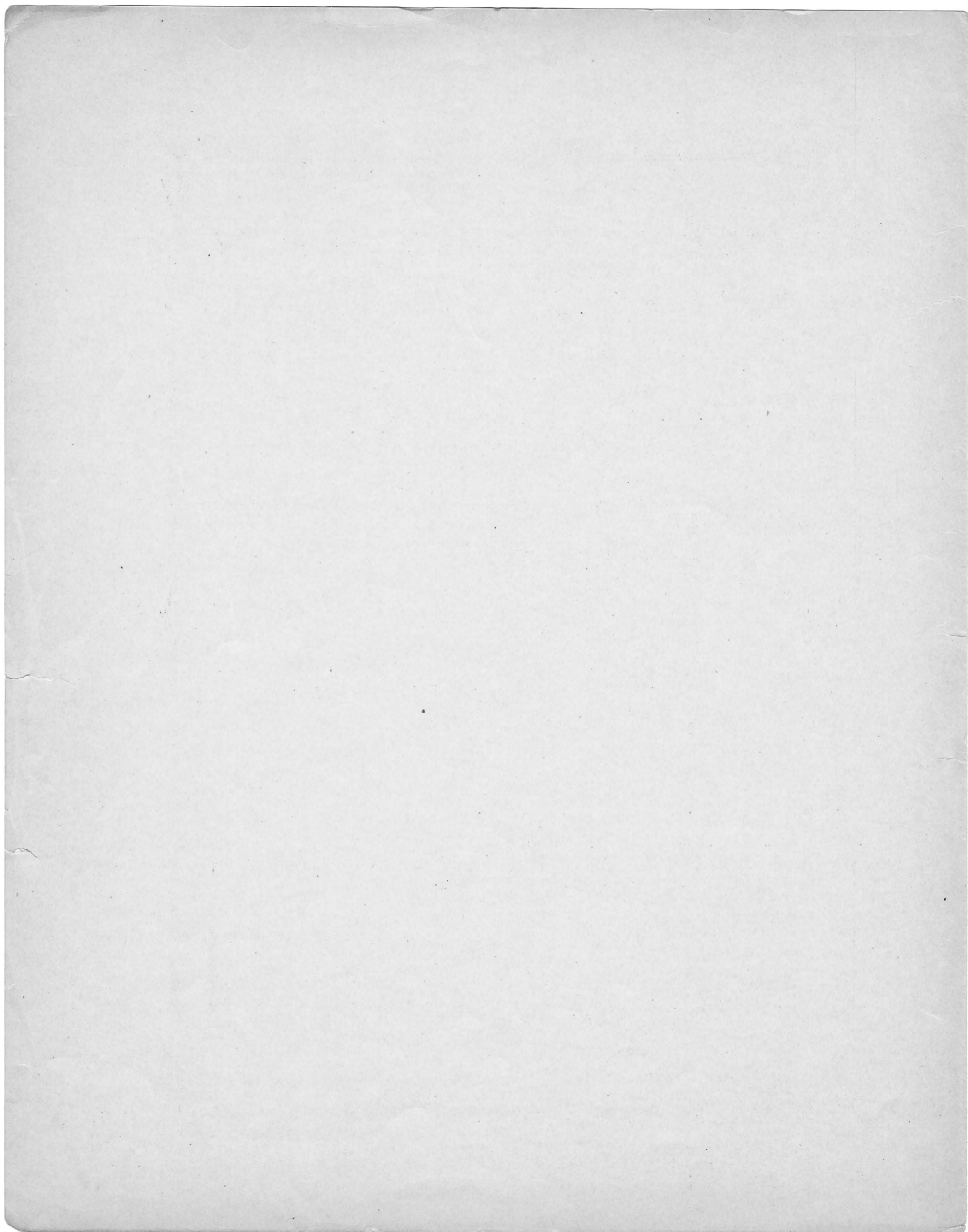
Don't let the grass grow dar - lin' _____ There's no time like the

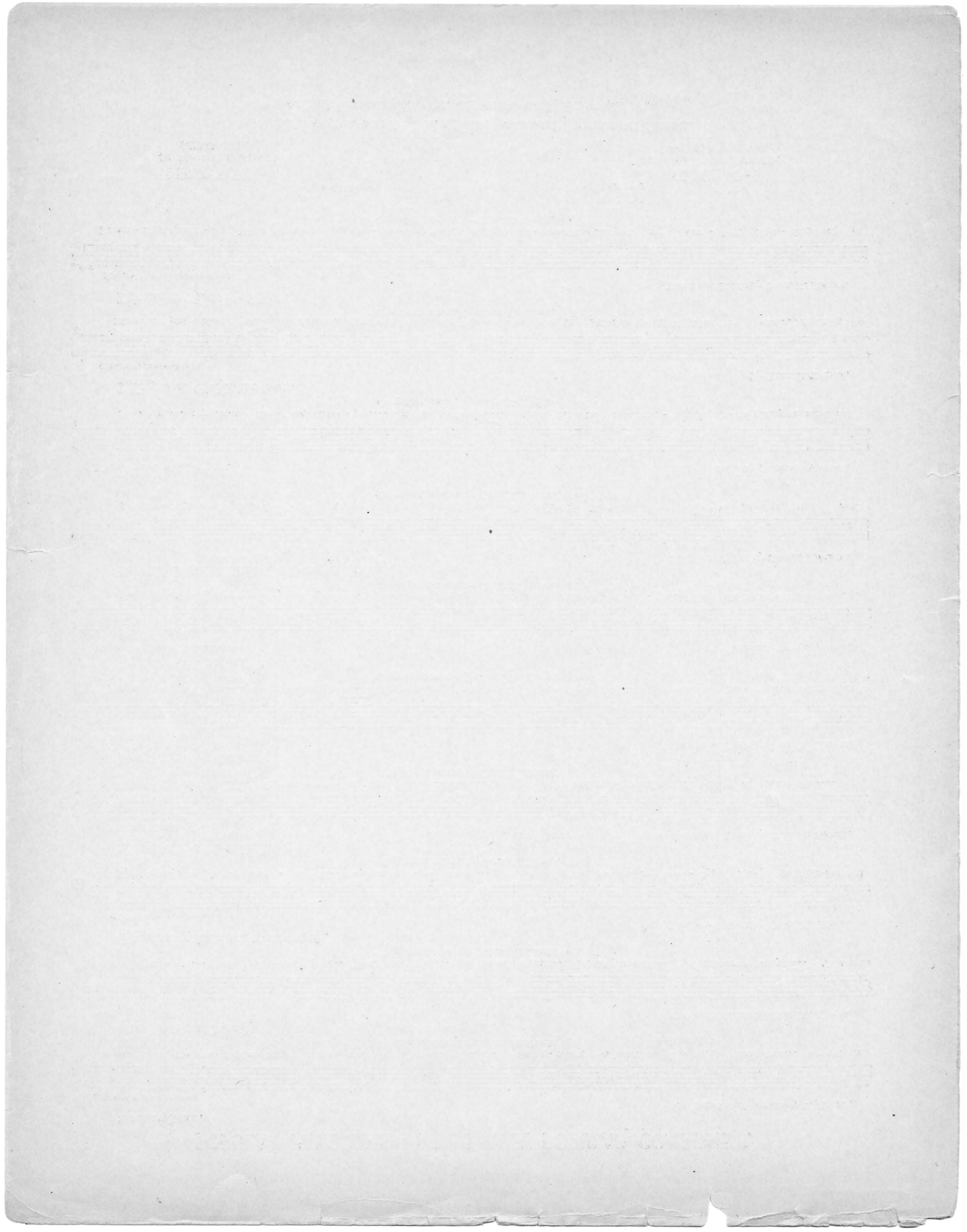
pres - ent they say, _____ Doub - le up, doub - le up, sure it

is such fun, For two can live as cheap as one, So

let's go to Dub - lin to - day. _____ day.

Dublin.3 Lower Birth 13.





POPULAR FAVORITES BY THE MOST POPULAR COMPOSERS.

Somewhere.

Words and Music by CHAS. K. HARRIS.

REFRAIN *con espress. one.*



Some - where the sun is shin - ing, Some - where a lit - tle rain,.... Some - where a heart is pin - ing, For love... but all in
Copyright, mcmvi, by Chas. K. Harris.

Would You Care?

Words and Music by CHAS. K. HARRIS.

CHORUS.



Would you care.... if I should leave you?... Would you care.... if we should part?... Would you care.... if some-one told you... That an -
Copyright, mcmv, by Chas. K. Harris.

Fly Away, Birdie, to Heaven.

Words and Music by CHAS. K. HARRIS.

CHORUS.

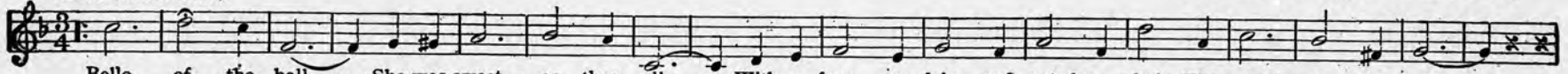


Fly a - way, bird - ie, to heav - en, Find our dear Mam - ma there,.... Tell her that we are so lone - ly, Pa - pa is sigh - ing and
Copyright, mcmv, by Chas. K. Harris.

The Belle of the Ball.

Words and Music by CHAS. K. HARRIS.

CHORUS. *Valse lento.*



Belle of the ball,.... She was sweet - er than all,.... With a face so fair and nut - brown hair, The queen' of them all,....
Copyright, mcmv, by Chas. K. Harris.

For Sale — A Baby.

Words and Music by CHAS. K. HARRIS.

REFRAIN.



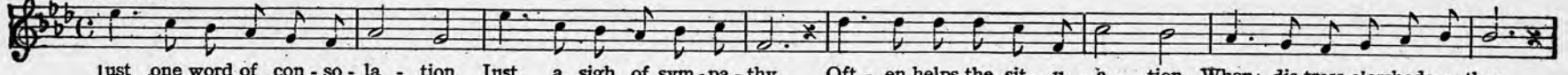
For sale, a ba - by,.... with gold - en hair,.... For sale, a ba - by,.... so sweet and fair,.... For sale, a ba - by,.... who'll smile and
Copyright, mcmiii, by Chas. K. Harris.

Just One Word of Consolation.

Words by FRANK B. WILLIAMS.

Music by TOM LEMONIER.

REFRAIN.

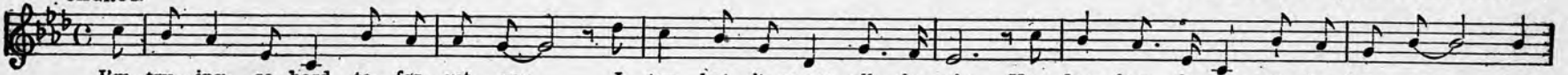


just one word of con - so - la - tion, Just a sigh of sym - pa - thy, Oft - en helps the sit - u - a - tion, When dis - tress o'er - shadows thee,
Copyright, mcmvi, by Chas. K. Harris.

I'm Trying So Hard To Forget You.

Words and Music by CHAS. K. HARRIS.

CHORUS.



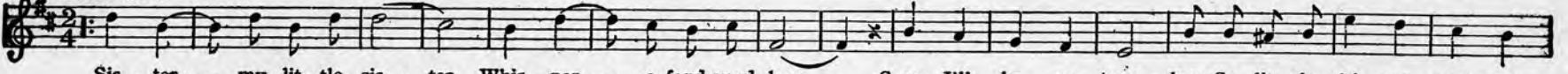
I'm try - ing so hard to for - get you, I try, but it seems all in vain, Your dear face is ev - er be - fore me, And
Copyright, mcmiv, by Chas. K. Harris.

Sister.

Words by ALAN M. RATTRAY.

Music by CLARENCE VAUGHN.

REFRAIN.



Sis - ter,.... my lit - tle sis - ter, Whis - per.... a fond good - bye,.... Soon I'll be re - turn - ing, So, lit - tle girl, you must not
Copyright, mcmv, by Chas. K. Harris.

I Know A Girl Like You.

By BILLE E. TAYLOR.

CHORUS. *Not too slow*

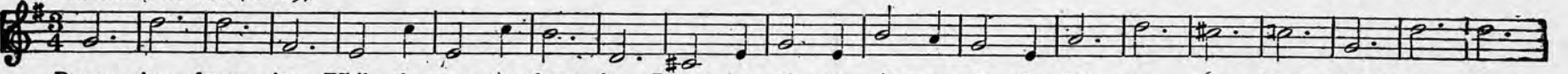


I know a girl like you,.... And she's a nice girl, too, She's the on - ly girl in all this world I'd like to woo,.... And that's the
Copyright, mcmvi, by Chas. K. Harris.

Dreaming, Love, of You.

Words and Music by CHAS. K. HARRIS.

REFRAIN. *Valse lento (tenderly).*



Dream - ing, dream - ing, While the stars are gleam - ing, Dream - ing of you al - ways, lit - tle girl, my dar - ling, Sigh - ing, cry -
Copyright, mcmv, by Chas. K. Harris.

Published by CHAS. K. HARRIS,

NEW YORK:

31 West 81st Street,
MEYER COHEN, Mgr.

CHICAGO:

Grand Opera House Bldg.,
JOE M. HARRIS, Mgr.

Complete copies can be had at all Music and Department Stores.
or will be sent postpaid, 25 cents each, 6 for \$1.00.