

SYMPATHY

Waltz-Song from the Comedy-Opera
"THE FIREFLY"

MUSIC BY RUDOLF FRIML

WORDS BY OTTO HAUERBACH

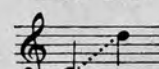
High in A \flat



Medium in G



Low in F



Each, 60 cents

PIANO SOLO, 60 cents

VIOLIN AND PIANO, 60 cents

PUBLISHED SEPARATELY, FROM "THE FIREFLY"

FOR VOICE AND PIANO

LOVE IS LIKE A FIREFLY. (Nina) High in F, Low in D
SOMETHING. (Jenkins and Suzette) Duet for Soprano and Tenor
GIANNINA MIA. (*Italian Street Song*) (Nina) High in E, Low in C
IN SAPPHIRE SEAS. (*Barcarolle*) (Sybil) High
TOMMY ATKINS. (Nina and Ensemble) High
SYMPATHY. (*Waltz-Song*) (Geraldine and Thurston) High in A \flat , Medium in G, Low in F
A WOMAN'S SMILE. (Jack) High in F, Low in D
DE TROP. (Jenkins, Pietro, Suzette) Medium
THE BEAUTIFUL SHIP FROM TOYLAND. (Franz) Bass
WHEN A MAID COMES KNOCKING AT YOUR HEART. (Nina) High in F, Low in D
AN AMERICAN BEAUTY ROSE. (Thurston and Chorus) Medium
THE LATEST THING FROM PARIS. (Pietro and Suzette) Medium
THE DAWN OF LOVE. (L'Alba d'Amore) (*Concert Waltz, English and Italian*) (Nina) High in F, Low in E \flat

Each, 60 cents

FOR PIANO SOLO

SYMPATHY	60 cents
THE FIREFLY WALTZES	75 cents
THE FIREFLY MARCH AND TWO-STEP	60 cents
SELECTIONS FROM THE OPERA	\$1.00 net

COMPLETE VOCAL SCORE OF "THE FIREFLY" \$2.00 net

G. SCHIRMER

NEW YORK : 3 EAST 43d STREET

LONDON, W. : 18, BERNERS STREET

BOSTON : THE BOSTON MUSIC CO.

Sympathy

WALTZ-SONG

From the Comedy-Opera "The Firefly"

Otto Hauerbach

Geraldine and Thurston

Rudolf Friml

INTRODUCTION

Tempo di Valse

Voice

Piano

Musical notation for the introduction, featuring a voice line and a piano accompaniment. The piano part includes dynamic markings such as *mf*, *pp*, and *rit.*

Marie

Marie

1. Has some one been such a naugh - ty boy? Um - hm!
 2. You don't think I am at all to blame? Um - uh!

Um - hm!
 Um - uh!

Musical notation for the first vocal line and piano accompaniment. The piano part includes dynamic markings such as *p*, *mf*, and *pp*.

Um - hm! Robbed your poor heart of its peace and joy?
 Um - uh! I think his ac - tions are just a shame.

Musical notation for the second vocal line and piano accompaniment. The piano part includes dynamic markings such as *mf*, *pp*, and *p*.

Copyright, 1915, by G. Schirmer

Depositado conforme a la ley de la Republica en el año MCMXV
por G. Schirmer (Inc), Propietarios Nueva York y Mexico

maie

Um - hm! — Um - hm! — Dry up those dew - drops and
 Um - uh! — Um - uh! — *mp* There's not a thing that I

mf *pp* *mf* *pp* *f*

look at me! What you're in need of is sym - pa - thy.
 would not do, If on - ly he would be sweet like you.

rit.

REFRAIN

a tempo

You need sym - pa - thy, sym - pa - thy, just
 I *maie* need sym - pa - thy, sym - pa - thy, just
 Fl. *a tempo* sym - pa - thy, sym - pa - thy, just

sym - pa - thy! You won't think I am free,
 sym - pa - thy! I won't think you are free,

rit. *a tempo*

You will not scold or say I am bold When I treat
I will not scold nor say you are bold When you treat

rit. *a tempo*

you ten - der - ly, ten - der - ly! Don't
me ten - der - ly, ten - der - ly! Don't

rit.

blame me, for you know I'm but show - ing
blame me, for I know you're but show - ing

cresc. *rit.*

a tempo

sym - pa - thy! - thy!
sym - pa - thy! - thy!

a tempo

1. 2.

REFRAIN

Marie
I need sym - pa - thy, sym - pa -

Maude
You need sym - pa - thy, sym - pa -

a tempo

thy, just sym - pa - thy! I won't think you are

thy, just sym - pa - thy! You won't think I am

free, I will not scold or say you are bold, When you

free, You will not scold or say I am bold, When I

rit.

a tempo

treat me ten - der - ly, ten - der -

a tempo

treat you ten - der - ly, ten - der -

a tempo

p.

cresc.

ly; Don't blame me, for I

cresc.

ly; Don't blame me, for you

cresc.

p.

rit. *a tempo*

know you're but show - ing sym - pa - thy!

rit. *a tempo*

know I'm but show - ing sym - pa - thy!

rit. *a tempo*

FOUR HITS FROM **"YOU'RE IN LOVE"**

NEW MUSICAL COMEDY BY THE AUTHCRS OF THE "FIREFLY", "HIGH-JINKS" and "KATINKA"

Price, each, 60 cents

You're in Love!

Lyric by Otto Hauerbach

All performing and mechanical reproducing rights reserved

Music by Rudolf Friml

Allegro moderato

p
Love, love, from No-ah's time to now, has puz-zled sage, Fool and

cresc.
Saint, Each one has told his neigh-bor how to di-ag-

Copyright, 1916, by G. Schirmer

He Will Understand!

Lyrics by Otto Hauerbach

All performing and mechanical reproducing rights reserved

Music by Rudolf Friml

Allegro moderato

Moderato comodo

Georgiana

I am a-fraid

'Tis not the fash-ion For an-y maid To tell her pas-sion.

Dorothy cresc.
Yet there are ways and 'cute lit-tle tricks,

Copyright, 1916, by G. Schirmer

Love-Land

Lyrics by Otto Hauerbach

All performing and mechanical reproducing rights reserved

Music by Rudolf Friml

Valse lento

a tempo
My love-ship seems drift-ing, My

a tempo
love-tide seems shift-ing, Look where I may,

Copyright, 1916, by G. Schirmer

Boola Boo

Wix and Chorus

Lyrics by Otto Hauerbach

All performing and mechanical reproducing rights reserved

Music by Rudolf Friml

Quasi gavotta

Mr. Wix

Once in Sou-dan sun-ny

stacc.
I be-held a fun-ny Dance called Boo-la,

stacc.
Done by na-tive wo-men Who where dressed for swim-min'

Copyright, 1916, by G. Schirmer