

# YorkSpace Collection

Work-Integrated Learning, Accessibility, Accommodations (WILAA)

Materials from SSHRC funded research project  
AcTinSite (2020-2023).



## AcTinSite Research Project Material

### AcTinSite Storyboard: Partial Disclosure During Placement

June 11, 2021

#### Summary

An activity used during the design charrette used visual stories. AcTinSite made three storyboards using <http://storyboardthat.com>. The stories arose from interviews AcTinSite completed over December 2020 and January 2021. Disabled students input guides the development of the stories. This story focuses on a student's experience if they only partially disclose their accommodations needs.

#### Original Citation

Torkashvand, G., Smith, H., Balkjo, M., and Dadashi, N. (2021,) *AcTinSite Storyboard: Partial Disclosure During Placement*. AcTinSite, YorkSpace.

#### Document Details

Knowledge Product Creator: Golnoosh Torkashvand & Hilda Smith

Published on YorkSpace: Fall 2021

#### AcTinSite Partners



UNIVERSITY OF  
TORONTO



# AcTinSite Storyboard: Partial Disclosure During Placement

Used in one of three breakout rooms to encourage discussion in a Design Charrette Activity.

## Characters



Figure 1 Katrina, Nurse Practitioner, Healthland Hospital

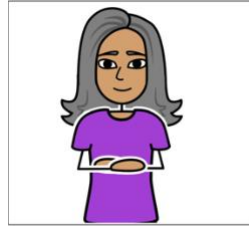


Figure 2 Natasha, Accessibility Counsellor, City University

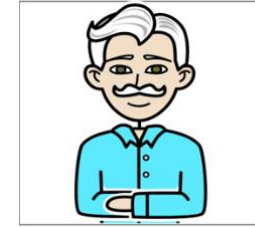


Figure 3 David, Clinical Director, Healthland Hospital



Figure 4 Michelle, Clinical Supervisor, Healthland Hospital

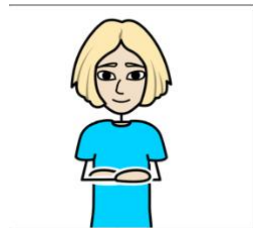


Figure 5 Goli, Preceptor, Healthland Hospital



Figure 6 Hanna, Accessibility Advisor, City University

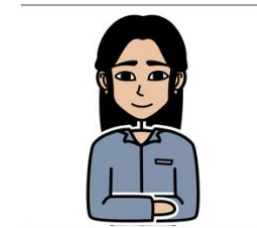


Figure 7 Yindi, Nursing Student, City University

## Locations

When you see the colours in the box under the story cell it indicates the location the story is in. Yellow indicated City University and blue is Healthland Hospital.

# YorkSpace Collection

## Work-Integrated Learning, Accessibility, Accommodations (WILAA)

Materials from SSHRC funded research project  
AcTinSite (2020-2023).



1



2

# YorkSpace Collection

## Work-Integrated Learning, Accessibility, Accommodations (WILAA)

Materials from SSHRC funded research project  
AcTinSite (2020-2023).



3

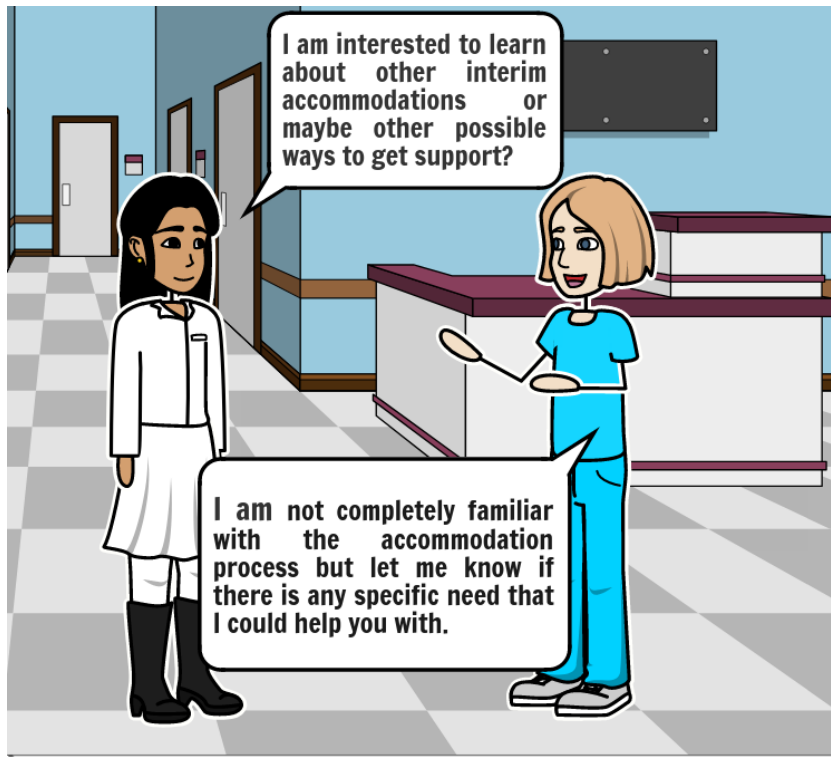


4

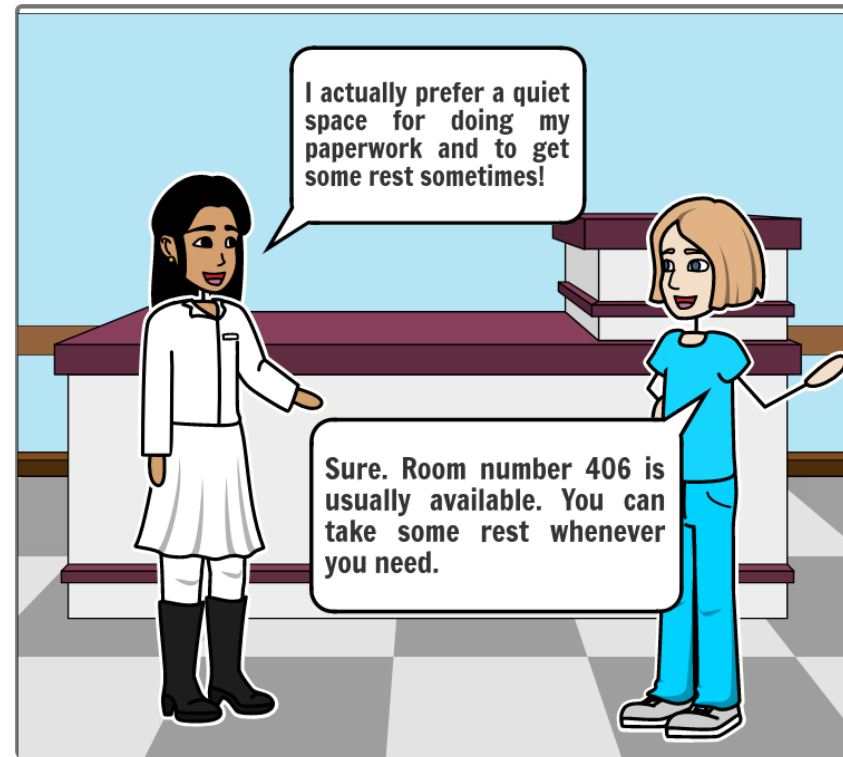
# YorkSpace Collection

## Work-Integrated Learning, Accessibility, Accommodations (WILAA)

Materials from SSHRC funded research project  
AcTinSite (2020-2023).



5



6

# YorkSpace Collection

Work-Integrated Learning, Accessibility, Accommodations (WILAA)

Materials from SSHRC funded research project  
AcTinSite (2020-2023).



7



8

# YorkSpace Collection

## Work-Integrated Learning, Accessibility, Accommodations (WILAA)

Materials from SSHRC funded research project  
AcTinSite (2020-2023).



9



10

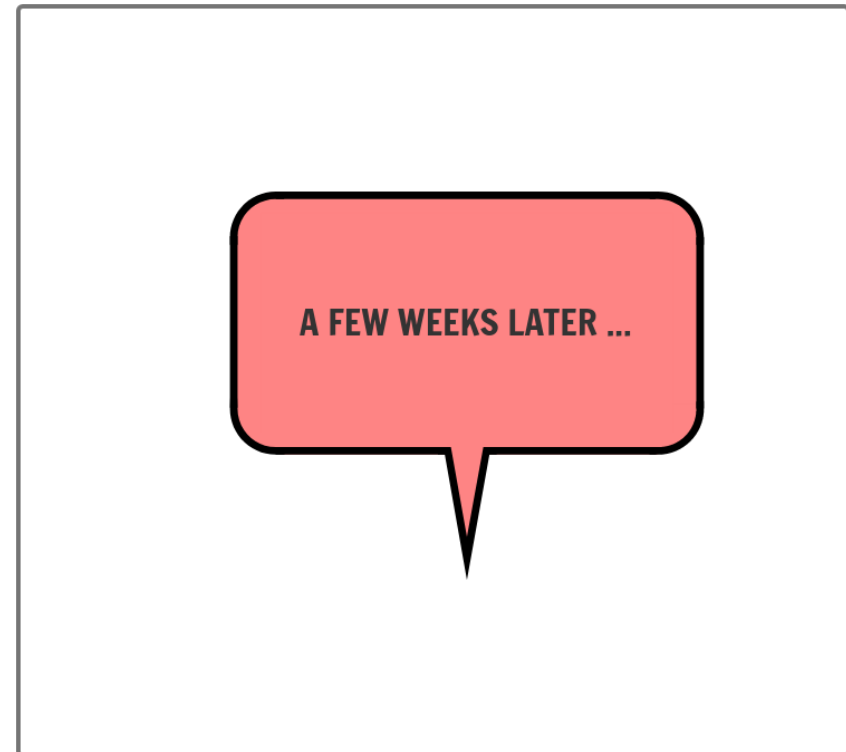
# YorkSpace Collection

## Work-Integrated Learning, Accessibility, Accommodations (WILAA)

Materials from SSHRC funded research project  
AcTinSite (2020-2023).



11



12

# YorkSpace Collection

## Work-Integrated Learning, Accessibility, Accommodations (WILAA)

Materials from SSHRC funded research project  
AcTinSite (2020-2023).



13



14

# YorkSpace Collection

Work-Integrated Learning, Accessibility, Accommodations (WILAA)

Materials from SSHRC funded research project  
AcTinSite (2020-2023).



15

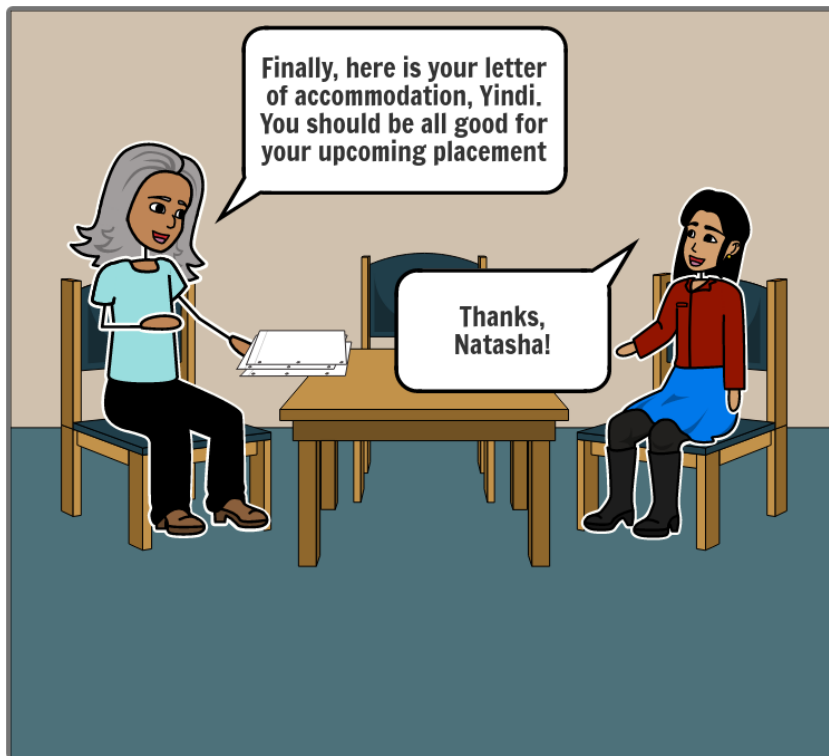


16

# YorkSpace Collection

Work-Integrated Learning, Accessibility, Accommodations (WILAA)

Materials from SSHRC funded research project  
AcTinSite (2020-2023).



17