

The background of the slide features a stylized topographic map with blue contour lines of varying thicknesses, creating a sense of depth and terrain. The lines are more densely packed in some areas, suggesting higher elevations, and more spread out in others.

# **Applications of Biocapacity to Saugeen Ojibway Nation (SON) Land Claims**

---

**Kaitlin Pal (she/her)**

Undergraduate Environmental Studies Student at York University

Ecological Footprint and Geomatics Research Assistant, Ecological Footprint Initiative

Geomatics Interdisciplinary Research Cluster, York University

# Background

---

SON lays claim to **3,036,589 hectares** of land in Midwestern Ontario.

SON is seeking recognition of title and compensation for the Crown's breaching of Treaty promises & fiduciary duty.

**What is Biocapacity?**

**How can Biocapacity apply to this?**



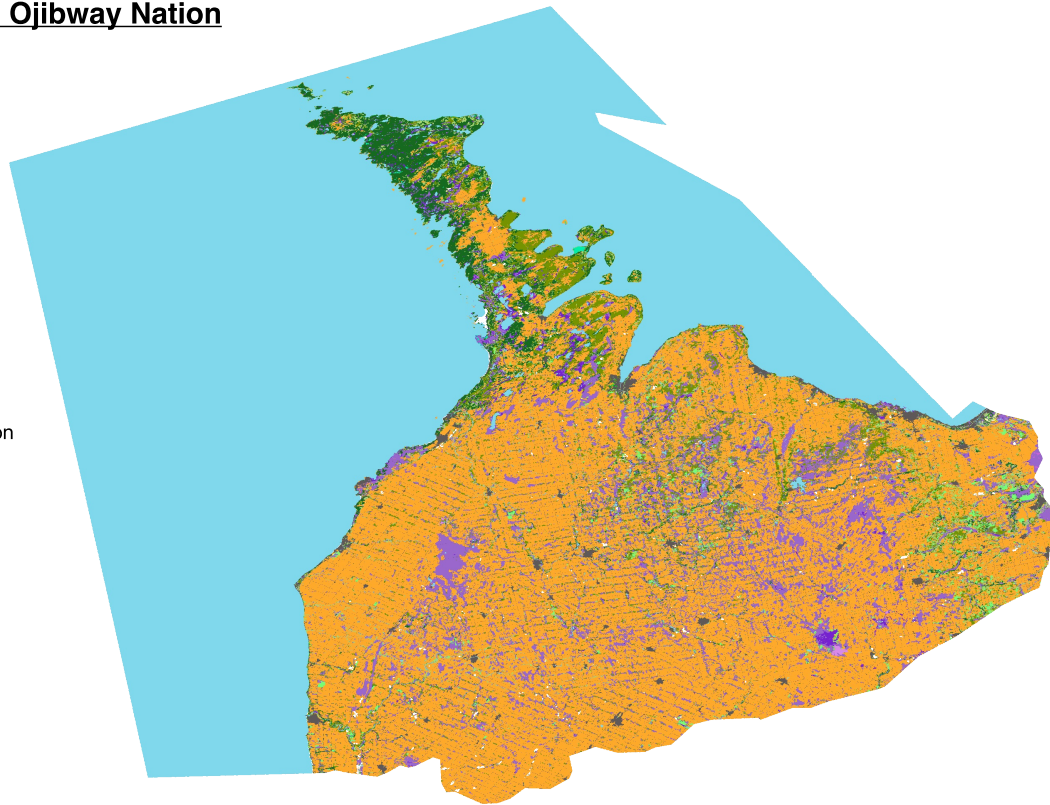
<http://saugeenojibwaynation.ca/resources>

# Biocapacity of Saugeen Ojibway Nation

## Legend

Biocapacity of Saugeen Ojibway Nation

- Band 1 (Gray)
- Open Clear Water
- Marsh
- Swamp
- Fen
- Bog
- Treed Upland
- Deciduous Treed
- Mixed Treed
- Coniferous Treed
- Plantations - Treed Cultivated
- Hedge Rows
- Alvar
- Open Tallgrass Prairie
- Tallgrass Savannah
- Community/Infrastructure
- Agriculture and Undifferentiated Rural Land Use



*Figure 1 - Map of SON's boundary and biocapacity (Map produced by Kaitlin Pal using data from OLCC v. 2.0 on QGIS)*

# What is the Biocapacity of SON's traditional territory?

4,173,902 gha



Wetlands



Forests



Grazing land



Cropland

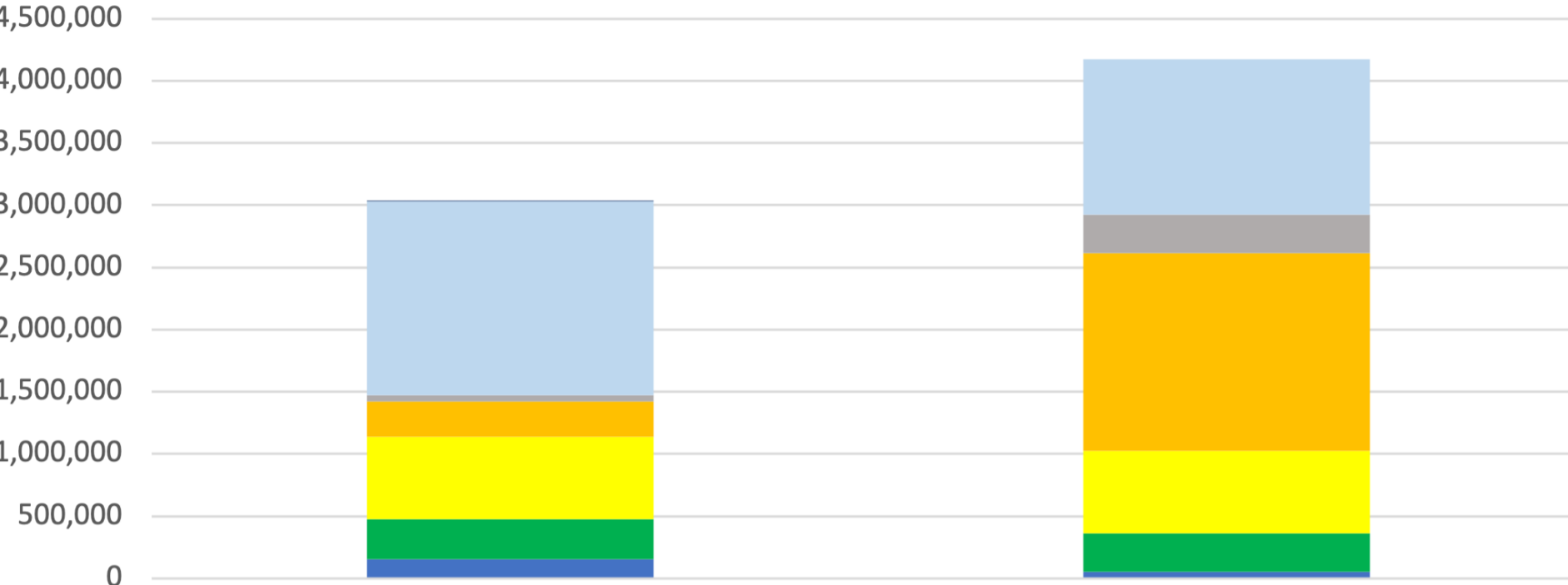


Built-Up Land



Fishing Grounds

# Saugeen Ojibway Nation Land Claim Boundaries Measured in hectares (ha) and global hectares (gha)



■ Wetlands ■ Forest ■ Grazing Land ■ Cropland ■ Built-up Land ■ Freshwater ■ Other

## Why is this significant?

---



- Provides a broader understanding of different types of land involved
- Intersects history, law, and the environment
- Integrates geomatics with Ecological Footprint and Biocapacity methodology
- Can be applied to other legal cases and parcels of land
- Environmental Assessment



# Thank You!

---

**Kaitlin Pal (she/her)**

Undergraduate Environmental Studies Student at York University  
Project Assistant, Ecological Footprint Initiative

[palkait@yorku.ca](mailto:palkait@yorku.ca)

