

*G. Mitchell*

# SOMETIME

(I'LL HEAR YOUR SWEET VOICE CALLING)

WORDS BY  
HAZEL M. LOCKWOOD  
MUSIC BY  
LEE W. LOCKWOOD



**BOOSEY & CO.**  
9 EAST SEVENTEENTH STREET, NEW YORK  
AND  
295 REGENT STREET, LONDON, ENG.

*Boosey & Co.*

THIS SONG MAY BE SUNG IN PUBLIC WITHOUT FEE OR LICENSE; THE PUBLIC PERFORMANCE OF ANY PARODIED VERSION, HOWEVER, IS STRICTLY PROHIBITED.  
COPYRIGHT MCMXXII BY BOOSEY & CO. PRINTED IN U.S.A.

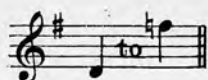
# SOMETIME

(I'll hear your sweet voice calling)

Words by  
HAZEL M. LOCKWOOD

Music by  
LEE W. LOCKWOOD

Moderato espress



Al-ways in the fire-light dim I sit and think of you;  
In the em-bers rud-dy glow I seem to see your smile;

Think of hap-py yes-ter-days And dreams that ne'er came true;  
Seem to see your ten-der eyes That lov'd me all the while;

Think of all the was-ted years, Brok-en hearts and fool-ish tears, And  
Now to you, my own I call, Oh for you my sad tears fall, And

*a tempo* *ritard.*

tho' our part-ing made life vain I know we'll meet a - gain. —  
 in my long-ing heart I pray That you'll come back some day. —

*a tempo* *ritard.*

**REFRAIN** *Molto espress.*

Some - time I'll hear your sweet voice call - - ing

*p-f*

Some - time I'll hear your foot-steps fall - - ing, Through this e -

ter - ni - ty of sor - - row You'll speak to me, my dear, my

own \_\_\_\_\_ Some - where you're wand'ring tired and lone - -

ly, Some - where you're wait-ing for me on - - ly,

But you'll come back to me and love me, Some - -

1. time, my own. \_\_\_\_\_ 2. time, my own. \_\_\_\_\_

THIS ENCHANTING MELODY IS ONE OF  
THE WORLD-FAMOUS FOUR INDIAN LOVE LYRICS

SPECIALLY FEATURED IN "THE SHEIK" MOVING PICTURE  
under the Title of

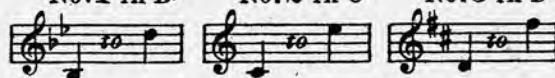
PALE HANDS I LOVED

ITS RARE BEAUTY ATTRACTED UNIVERSAL ATTENTION

# KASHMIRI SONG

Words by  
LAURENCE HOPE

No. 1 in B $\flat$     No. 2 in C $\sharp$     No. 3 in D



Music by  
AMY WOODFORDE-FINDEN

*Mod<sup>to</sup> assai con molto sentimento*



*p* Pale hands I loved be - side the Sha - li - mar,\* Where are you now? Who lies be -  
*p*  
*cresc.* neath your spell? Whom do you lead on Rapture's roadway, far, *mf* Be - fore you a - go -  
*cresc.*  
*f accel.* nise them in fare - well, Be - fore you a - go - nise them in fare - well?  
*accel.* *dim.* *p* *rall.*  
*a tempo.* *p* *rall. e dim.* *pp*  
Pale hands I loved be - side the Sha - li - mar, Where are you now? Where are you now?  
*a tempo.* *rall. e dim.* *pp*

\*Gardens.

Copyright, 1902, by Mrs. Woodforde - Finden. New Edition, Copyright, 1903, by Boosey & Co.

Boosey & Co. - The House of Song Fame  
NEW YORK & LONDON

# Reinald Werrenrath - AMERICA'S PREMIER BARITONE

Says:-

DUNA IS WITHOUT DOUBT ONE OF THE MOST EFFECTIVE SONGS I HAVE EVER KNOWN. WITHOUT A "CHEAP" LINE IN IT, IT HAS THAT WONDERFUL APPEAL THAT REACHES THE HEART OF EVERY LISTENER. THE DAY I RECEIVED THAT SONG I SHALL ALWAYS COUNT A MOST FORTUNATE ONE FOR ME.

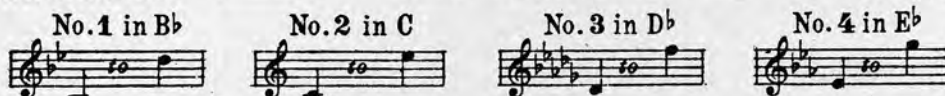
John Mc Cormack, Francis Rogers, CANTOR Joseph Rosenblatt  
AND SCORES OF OTHER LEADING SINGERS ENTHUSE OVER THIS MOST  
CHARMING SONG OF RECENT YEARS

# DUNA

The Words by  
MARJORIE PICKTHALL

The Music by  
JOSEPHINE MCGILL

No. 1 in B $\flat$       No. 2 in C      No. 3 in D $\flat$       No. 4 in E $\flat$



Con moto. about (84 =  $\text{♩}$ )      *pp rit.*



And the lit - tle stars of Du - na, Call me home.      The



lit - tle stars of Du - na call me home,      The lit - tle stars of Du - na, Call me



home.      *pp a tempo*      *a tempo*      *pp*      *ppp*

Copyright MCMXIV by Boosey & Co. 2208

Boosey & Co. - The House of Song Fame  
NEW YORK & LONDON

# THE LATEST DANCE HIT FROM LONDON

HERE IS A REFRAIN UNIQUE AND CAPTIVATING

TEXT BY  
P. ERDEMANN

## WISTFUL WALTZ

MUSIC BY  
GAY GARNER

*Wistfully*  
*mf*

Your wist - - ful eyes hold Par - - a -  
- dise, I long to see them smile  
at me, Like stars a - bove, twin  
stars of love, With joy a - part  
to fill my heart. Your heart.

1  
2. *D. S. for Song*  $\$$

Copyright, MCMXXII, by Boosey & Co.

Boosey & Co. - THE HOUSE OF SONG FAME  
NEW YORK & LONDON