

# LET'S STROLL IN THE GARDEN OF DREAMS

A. H. WOODS Presents

# JULIAN ELTINGE IN "THE FASCINATING WIDOW"

Jack O'Lantern Moon . . . . .	60
Lets Stroll In The Garden Of Dreams . . . . .	60
Ragtime College Turkey Trot . . . . .	60
The Widow Fascinating . . . . .	60
Julian Eltinge's Bathing Song . . . . .	60
Hindoo . . . . .	60

LYRICS BY  
**JULIAN ELTINGE**  
AND  
**JACK MAHONEY**  
MUSIC BY  
**PERCY WENRICH**

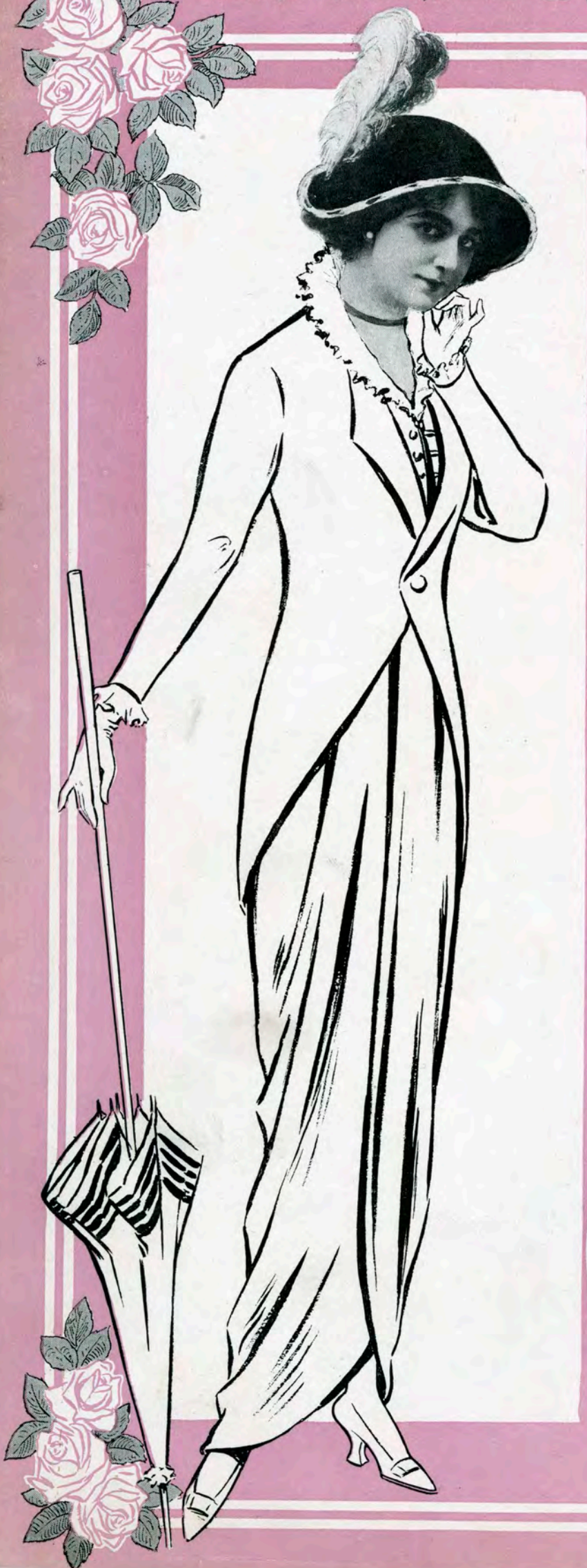


JULIAN ELTINGE



PERCY WENRICH

PERCY WENRICH HOPER HOWARD  
**THE WENRICH HOWARD CO.**  
MUSIC PUBLISHERS  
152-154 WEST 45TH STREET  
NEW YORK



STARMER

THE UNIVERSITY OF CHICAGO

PHYSICS DEPARTMENT

PHYSICS 311

LECTURE 1

1.1. THE CLASSICAL LIMIT

1.2. QUANTIZATION

1.3. THE HARMONIC OSCILLATOR

1.4. THE PARTICLE IN A BOX

1.5. THE HYDROGEN ATOM

1.6. THE SPIN OF THE ELECTRON

1.7. SUMMARY

APPENDIX A

# Let's Stroll In The Garden Of Dreams.

Words by  
JACK MAHONEY.

Music by  
PERCY WENRICH.

Andante moderato.

The piano introduction is in G major, 6/8 time, and consists of 8 measures. It begins with a mezzo-forte (*mf*) dynamic. The melody is in the right hand, and the accompaniment is in the left hand. The piece concludes with a forte (*f*) dynamic.

1. Sweet vis - ions of love - days are dawn - ing, My  
 2. Like bea - cons your eyes seem to guide me, They

The first system of the vocal melody is in G major, 6/8 time. The piano accompaniment is in the same key and time signature, starting with a piano (*p*) dynamic. The lyrics are written below the vocal line.

soul fills with rap - ture a - new, Since your eyes met mine, your  
 light my way o'er love-land seas, Tho' storm clouds may roll, your

The second system of the vocal melody continues in G major, 6/8 time. The piano accompaniment continues with the same dynamics and accompaniment style.

heart is my shrine, All my fu-ture joys lie in you The  
 love is my goal, The isl - and of sweet mem - o - ries With-

The final system of the vocal melody concludes in G major, 6/8 time. The piano accompaniment provides a full harmonic support for the vocal line.

win - ter of sad - ness has gone dear, The  
out you I'd feel as a brook - let, A -

spring-time of glad - ness is nigh — How real it all seems, when  
wait - ing the voice of the streams — Tho' fate bids us stay, for -

we live in dreams, Where lips ec - ho sigh for sigh. —  
ev - er and aye, Dear, all will come true in dreams. —

## REFRAIN.

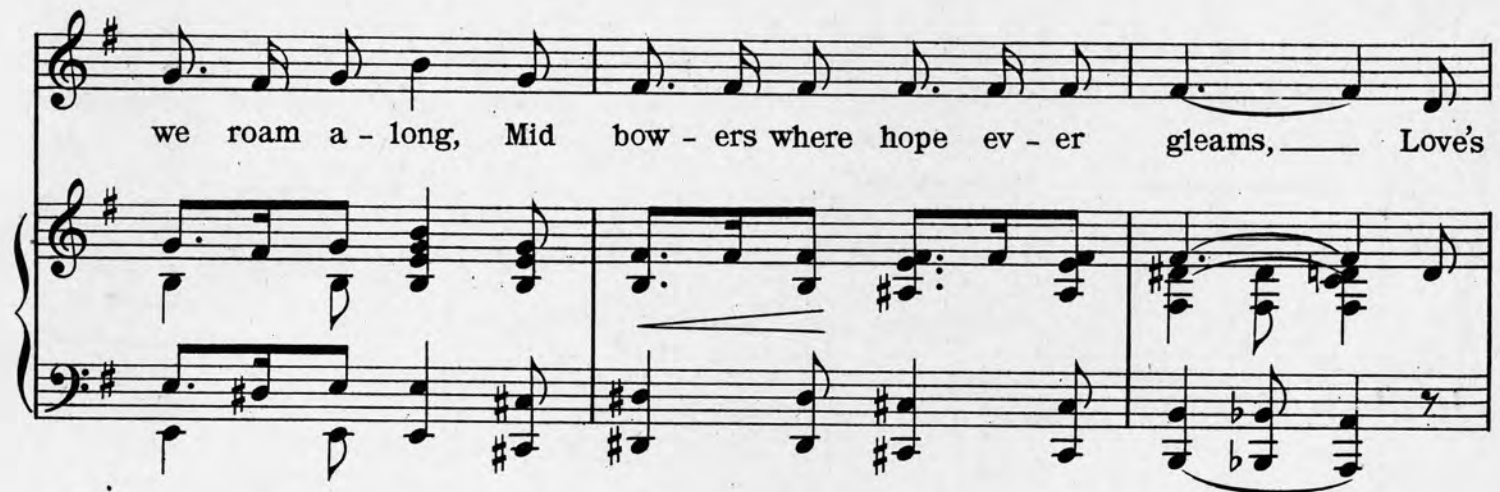
*slowly.*

Let's stroll in the Gar - den of Dreams dear, Let's

stroll in the Gar - den of Dreams, — We'll sing love's old song, As



we roam a - long, Mid bow - ers where hope ev - er gleams, — Love's



rose in the gar - den is bloom - ing, Your smile is it's sun-shine it seems — If



your heart but knew My world means just you, Let's stroll in the Gar - den of Dreams. —

