

# SIERRA SUE

Words and Music by  
JOSEPH B. CAREY



*Abe Lyman*

MADE  
IN  
U.S.A.

REG. U.S. PAT. OFF.  
SHAPIRO, BERNSTEIN & Co. Inc.  
MUSIC PUBLISHERS NEW YORK

IM-40  
SE

# Try These Grand Old Songs

Words by  
GEO. A. NORTON and  
MAYBELLE E. WATSON

## My Melancholy Baby

Music by  
ERNEST M. BURNETT

Guitar CHORUS

Chords: Eb, Bb7, Cdim, Eb, Bbm6, C+, G7, Fm

Tempo: Slowly (with feeling)

Come to me, MY MEL-AN-CHO-LY BA - BY Cud-dle up and

Copyright MCMXXI by Shapiro, Bernstein & Co. Inc.

Originally entitled "MELANCHOLY"

Copyright MCMXXI by Ernest M. Burnett  
Copyright renewed MCMXXXVIII by Ernest M. Burnett, Copyright renewed MCMXXXVIII by Maybelle E. Watson Bergmann  
Copyright MCMXXII by Joe Morris Music Co.  
Copyright renewed MCMXXXIX by Ernest M. Burnett  
Copyright renewed MCMXXXIX by Charles E. Norton, Isabelle Fincher Gibson and Minnie Fincher Hodcs  
Copyright MCMXXIV by Joe Morris Music Co.

Words by  
BETH SLATER WHITSON

## Let Me Call You Sweetheart

(I'm In Love With You)

Music by  
LEO FRIEDMAN

Guitar CHORUS

Chords: Bb, Bbdim, Bb, Eb, G7, C7

LET ME CALL YOU SWEET-HEART, I'm in love with you

Copyright MCMXXXVIII by Paull-Pioneer Music Corp. and Shapiro, Bernstein & Co. Inc.

Copyright MCMXX by Leo Friedman  
Copyright renewed MCMXXXVII by George M. Whitson. Assigned to Paull-Pioneer Music Corp. 1667 Broadway, New York  
Copyright renewed MCMXXXVII by Friedrika F. Loewenthal. Assigned to Shapiro, Bernstein & Co. Inc. New York  
Published by PAULL-PIONEER MUSIC CORP. and SHAPIRO, BERNSTEIN & Co. Inc.  
Sole Selling Agents-Shapiro, Bernstein & Co. Inc. R. K. O. (Radio City Music Hall) Building, 1270 Sixth Avenue, New York

## Meet Me To-Night In Dreamland

Words by  
BETH SLATER WHITSON

Music by  
LEO FRIEDMAN

Guitar CHORUS

Chords: Bb, Bb7, G+, G7, C7, F7

MEET ME TO-NIGHT IN DREAM - LAND Un-der the

Copyright MCMXX by Leo Friedman  
Copyright renewed MCMXXXVI by Friedrika F. Loewenthal Copyright assigned  
Copyright MCMXXXVII by Shapiro, Bernstein & Co. Inc. Radio City Music Hall Building, 1270 Sixth Avenue, New York  
International Copyright Secured  
ALL RIGHTS RESERVED  
Including Public Performance for Profit

Complete Copies may be had where you bought this

Just  
Publish

The  
GE  
Dan  
Fol  
for  
194

Contain  
the  
SEASO  
SONG  
SUCCES

27  
TUNE  
arranged  
FOXTRO  
and  
WALTZ

with  
GUITAR  
DIAGRA

also  
photographs  
famous  
song write

PRICE  
50  
POSTPA



# Sierra Sue

Words and Music by  
JOSEPH B. CAREY

Ballad tempo

*mf*

Guitar  
VERSE



Far from the ci - ty of sor - rows Sweet - heart, I'm  
When you are ti - red and wea - ry Then you'll come

*mp*



wait - ing for you \_\_\_\_\_ Come to the hills that  
home to the fold \_\_\_\_\_ There on the trail you'll



love you Come to a heart fond and true: \_\_\_\_\_  
find me Wait - ing for you as of old: \_\_\_\_\_

Copyright MCMXVI by Buell Music Co.

Copyright transferred MCMXXIV to James W. Anderson - Copyright transferred MCMXXX to Joseph B. Carey  
Copyright transferred MCMXXXIX to Alice M. Carey - Copyright transferred MCMXL to Shapiro, Bernstein & Co. Inc.

Copyright MCMXL by Shapiro, Bernstein & Co. Inc. R.K.O. (Radio City Music Hall) Building, 1270 Sixth Avenue, New York

International Copyright Secured

ALL RIGHTS RESERVED  
Including Public Performance for Profit

Printed in U.S.A.

CHORUS

*Guitar tacet*

SI - ER - RA SUE, I'm sad and lone - ly The rocks and

*p-mf*

rills are lone - ly, too SI - ER - RA

SUE, I want you on - ly No one but

you SI - ER - RA SUE The ro - ses

*Guitar tacet*

G *G dim* G *G dim* G G7

weep, their tears are fall - ing The gen - tle doves

E7 Am E7 Am A7

no long - er coo Oh! can't you hear

G Dm6 E7 A7 Em C7

my sad heart call - ing Call - ing for you,

A7 D7 1 G D dim D7 *Guitar tacet* 2 G C Cm6 G

SI - ER - RA SUE. SI - ER - RA SUE.

Sierra Sue-3

**WARNING!** ANY COPYING OF THE WORDS OR MUSIC OF THIS SONG OR ANY PORTION THEREOF, MAKES THE INFRINGER LIABLE TO CRIMINAL PROSECUTION UNDER THE U. S. COPYRIGHT LAW...

Just Published

The **GEM** Dance Folio for 1940

Containing the SEASON'S SONG SUCCESSES

27 TUNES arranged as FOXTROTS and WALTZES

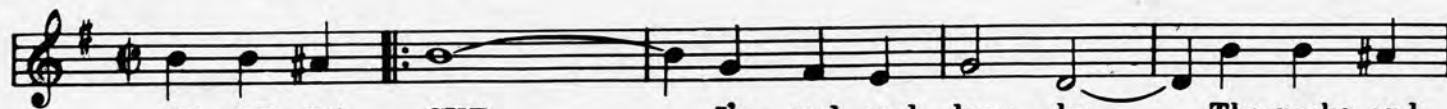
with GUITAR DIAGRAMS

also photographs of famous Song Writers.

PRICE 50¢ POSTPAID

# Good Songs Are Always In Demand

## SIERRA SUE



SI - ER - RA SUE, I'm sad and lone - ly The rocks and  
Copyright MCMXVI by Buell Music Co. - Copyright transferred MCMXL to Shapiro, Bernstein & Co. Inc.

## HER NAME WAS ROSITA



Ro - si - ta, HER NAME WAS RO - SI - TA  
Copyright MCMXL by The Peter Maurice Music Co Ltd Sole Selling Agents - Shapiro, Bernstein & Co. Inc.

## IT'S THE SAME OLD SHILLELAGH



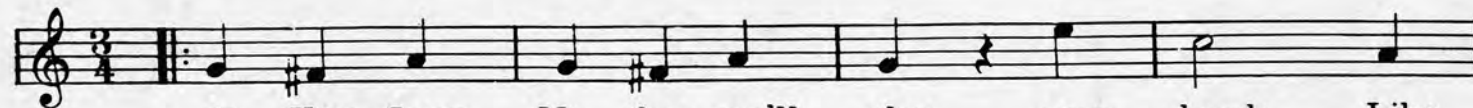
Sure IT'S THE SAME OLD SHIL - LE - LAGH me fa - ther brought from I - re - land And  
Copyright MCMXL by Shapiro, Bernstein & Co. Inc.

## SWEET LITTLE SWEETHEART



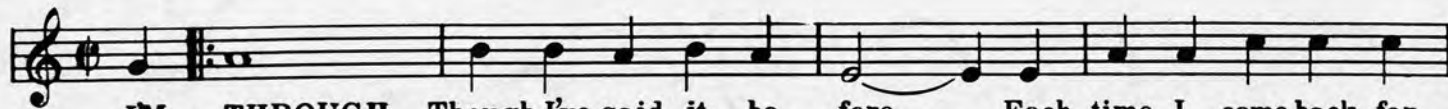
SWEET LIT - TLE SWEET - HEART, I love you I do  
Copyright MCMXL by Shapiro, Bernstein & Co. Inc.

## IF YOU LOVE ME



IF YOU LOVE ME then you'll clap your hands, Like  
Copyright MCMXL by Dave Franklin, Copyright assigned to Shapiro, Bernstein & Co. Inc.

## I'M THROUGH



I'M THROUGH Though I've said it be - fore Each time I came back for  
Copyright MCMXL by State Street Music Pub. Co. Sole Selling Agents - Shapiro, Bernstein & Co. Inc.

The Above Songs On Sale At All Music Counters