

Aggravatin' Papa

(Don't you try to two time me)



by
ROY TURK &
J. RUSSEL ROBINSON

Waterson, Berlin & Snyder Co.,
STRAND
THEATRE
BUILDING
NEW YORK

Trade Mark Registered



Frederick S. Manning

Try This On Your Piano

One Night In June

Words by
HARRY B. SMITH and
FRANCIS WHEELER

Music by
TED SNYDER
ARTHUR LANGE and
ERNEST KLAPHOLZ

Chorus

night in June, We heard a tune, My heart will hear for



ev - er. Our lips first met; I'll ne'er for - get, that



kiss, tho' years may sev - er. In all my dreams, A -



gain it seems, We two drift on to - geth - er. That



Copyright MCMXXII by Waterson, Berlin & Snyder Co.
Copyright Canada MCMXXII by Waterson, Berlin & Snyder Co.

International Copyright Secured
For Sale By All Dealers

Aggravatin' Papa

(Don't You Try To Two-Time Me)

By ROY TURK and
J. RUSSEL ROBINSON

Moderato

Piano

f *p*

Till Ready

The piano introduction consists of two staves. The right hand features a rhythmic melody with eighth and sixteenth notes, while the left hand provides a steady accompaniment of chords and single notes. The tempo is marked 'Moderato' and the dynamics range from forte (f) to piano (p). A section marked 'Till Ready' begins with a repeat sign and a change in dynamics to piano (p).

Voice

p

I know a trif- lin' man, — They call him 'Trif- lin' Sam'.
Now I don't mean to scold, — But I must get you told, —

The first system of the vocal line shows the beginning of the song. The melody is written on a single staff with lyrics underneath. The piano accompaniment is shown on two staves below, starting with a piano (p) dynamic. The key signature has two flats (B-flat and E-flat).

He lives in Birm- ing - ham, — 'Way down in Al - a - bam'. — Now the
Keep flirt- in' round so bold, — You'll see my love grow cold. — Don't care

The second system continues the vocal melody and piano accompaniment. The lyrics describe the location of the man in Birmingham, Alabama. The piano accompaniment continues with a steady accompaniment.

oth- er night, — He had a fight — with a gal named Man- dy Brymm, — And she
who she is, — Or what she does — ain't a gal in this here town, — That can

The third system continues the vocal melody and piano accompaniment. The lyrics describe a fight with a woman named Mandy Brymm. The piano accompaniment continues with a steady accompaniment.

plain- ly stat - ed she was ag- gra- vat - ed, As she shout- ed out to him: —
love and pet — you like your own sweet mam - ma, So you'd bet- ter throw 'em down: —

The fourth system concludes the vocal melody and piano accompaniment. The lyrics describe the woman's reaction to the man's behavior. The piano accompaniment continues with a steady accompaniment.

Copyright MCMXXII. by Waterson, Berlin & Snyder Co.
Copyright Canada MCMXXII. by Waterson, Berlin & Snyder Co.
International Copyright Secured

Chorus

"Ag-gra-vat-in' pa-pa, Don't you try to two-time me, — I said, don't

The first system of the chorus features a vocal line in the treble clef and a piano accompaniment in the grand staff. The key signature has two flats (B-flat and E-flat), and the time signature is 4/4. The piano part begins with a double bar line and a repeat sign, followed by a dynamic marking of *p-f*. The vocal line starts with a double bar line and a repeat sign, then continues with the lyrics. The piano accompaniment consists of chords and moving lines in both hands.

two-time me!' — Ag-gra-vat-in' pa-pa, Treat me kind or let-me-be, —

The second system continues the vocal line and piano accompaniment. The piano part features a prominent bass line in the left hand and a more active treble line in the right hand. The vocal line follows the piano accompaniment with the lyrics.

I mean, just let me be. — List-en while I get you told —

The third system continues the vocal line and piano accompaniment. The piano part has a steady rhythm with some melodic movement in the right hand. The vocal line is in the treble clef and follows the piano accompaniment.

Stop mess-in' round, sweet jel-ly roll, — If you step out with a highbrow ba-by,

The fourth system continues the vocal line and piano accompaniment. The piano part has a consistent harmonic support for the vocal line. The vocal line is in the treble clef and follows the piano accompaniment.

I'll smack you down and I don't mean "may-be." Ag-gra-vat-in' pa-pa,

The fifth system concludes the chorus with the vocal line and piano accompaniment. The piano part ends with a final chord in the right hand and a sustained bass line in the left hand. The vocal line is in the treble clef and follows the piano accompaniment.

I'll do an - y - thing you say — Yes, an - y - thing you say. —

But when you go strut-tin', Do your strut-tin' round my way. —

So pa-pa,
Now pa-pa,
Now pa-pa,

Just treat me pret-ty, You best be care-ful, Once you were steady,

Be nice and sweet, Cause I pos-sess a fort - y four that As you can be, Cause I can beat you do - in' what you're Once you were true, But pa - pa, now sweet mam-ma can't de -

don't re - peat, — do - in' me, — pend on you, —

Ag-gra - vat - in' pa - pa, Don't you try to two-time

me!"

me!"

D.S.

The Latest Sensational Song Hit

I GAVE YOU UP JUST BEFORE YOU THREW ME DOWN

BY BERT KALMAR HARRY RUBY and FRED E. AHLERT



Chorus

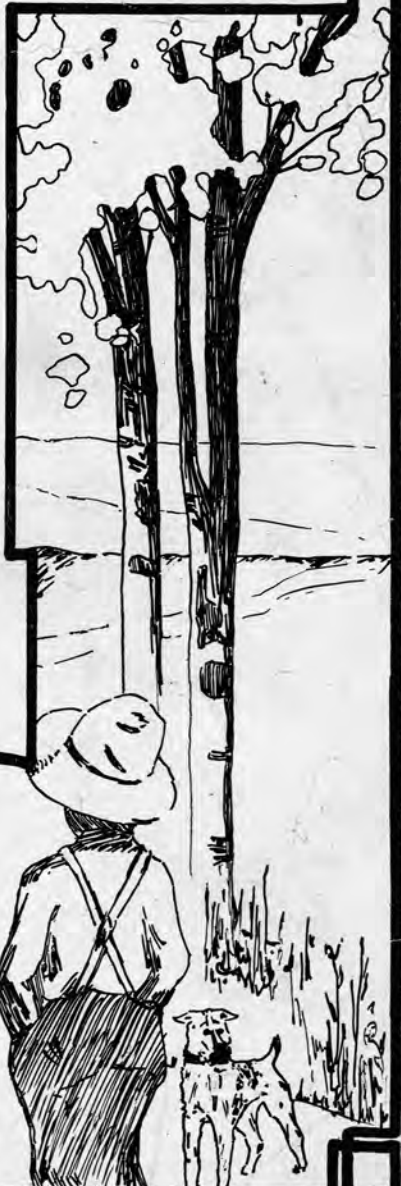
But I gave you up — just be-fore — you threw me down;—

p-f

You'll see a smile — where you thought — you'd see a frown. — Don't

try to de - ny — that you fooled — me from the start; — You

broke each vow, — And I know now — You meant to break my heart. — It's



Copyright MCMXXII by Waterson, Berlin & Snyder Co
Copyright Canada MCMXXII by Waterson, Berlin & Snyder Co
International Copyright Secured

1247-3

THIS SONG FOR SALE AT ALL MUSIC DEALERS
OR SENT DIRECT BY THE PUBLISHER ON RECEIPT OF 35¢
ALSO OBTAINABLE ON ALL PHONOGRAPH RECORDS AND MUSIC ROLLS
A LIST OF LATEST SONG HITS SENT ON REQUEST

WATERSON, BERLIN & SNYDER CO. STRAND BLD'G, NEW YORK.