

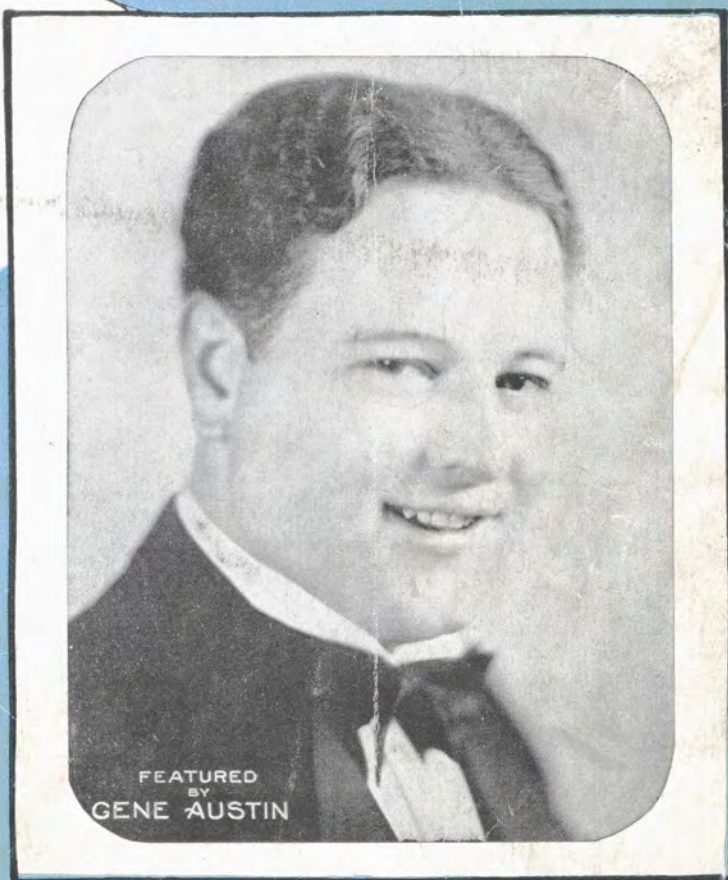
38

# MY MELANCHOLY BABY

With  
Ukulele Arrangement



*Fox Trot  
Ballad*  
by  
**GEO. A. NORTON &  
ERNE BURNETT**



**JOE MORRIS MUSIC Co.**  
+ MUSIC PUBLISHERS +  
1619 BROADWAY · NEW YORK CITY

MADE IN U.S.A.

Words by  
GEO. A. NORTON

# My Melancholy Baby

Music by  
ERNE BURNETT

Moderato

Tune Uke  
Bb Eb G C

Uke arr. by Bob Neilson

The piano introduction consists of two staves. The right hand plays a melodic line in a minor key with a tempo marking of 'Moderato'. The left hand provides a harmonic accompaniment with chords and moving bass lines.

Come sweet-heart mine,      Don't sit and pine,      Tell me of the cares that make you feel so blue.  
Birds in the trees,      Whispering breeze,      Should not fail to lul you in - to peace-ful dreams.

The first verse of the song is set to a 6/8 time signature. The vocal line is written on a single staff with lyrics underneath. The piano accompaniment continues with two staves, providing harmonic support for the vocal melody.

What have I done?      An-swer me Hon',-      Have I ev-er said an un-kind word to you?  
So tell me why-      Sad-ly you sigh,-      Sit-ting at the win-dow where the pale moon beams,

The second verse continues the 6/8 time signature. The vocal line and piano accompaniment are shown with lyrics and musical notation.

My love is true,      And just for you,-      I'd do al-most an-y-thing at an-y time,  
You should'n't grieve,      Try and be lieve,      Life is al-ways sun-shine when the heart beats true;

The third verse continues the 6/8 time signature. The vocal line and piano accompaniment are shown with lyrics and musical notation.

Dear, when you sigh      Or when you cry,      Some thing seems to grip this ver-y heart of mine.  
Be of good cheer,      Smile thro' your tears,      When you're sad it makes me feel the same as you.

The fourth and final verse continues the 6/8 time signature. The vocal line and piano accompaniment are shown with lyrics and musical notation.

Copyright MCMXI by Ernest M. Burnett  
Copyright transferred MCMXII to Theron C. Bennett  
Copyright transferred MCMXXII to Joe Morris Music Co. 1587 B'way, N. Y.  
International Copyright Secured

CHORUS

Come to me, my mel-an-chol-y ba - by, Cud-dle up and don't be blue;

All your fears are fool-ish fan-cy, may be, You know, dear, that I'm in love with

you. Ev-'ry cloud must have a sil-ver lin - ing, Wait un-til the sun shines

through, Smile my hon-ey dear, while I kiss a-way each tear, Or

else I shall be mel-an-chol-y too. Now won't you too.

YOU HEAR THEM  
On THE RADIO-

# "SONG HITS" THAT WILL LIVE FOREVER

TRY THEM  
On YOUR PIANO

## "In the Valley of the Moon"

CHORUS

Down the lane we'd meet, by the roses, — IN THE VAL-LEY OF THE

*mp-f*

## "Good Night, Little Girl of My Dreams"

CHORUS

I'm al-ways blue when I whis-per to you, GOOD-NIGHT, LIT-TLE GIRL OF MY DREAMS. —

*mp-f*

## "When Your Hair Has Turned To Silver"

CHORUS

When your hair has turned to sil-ver, — I will love you just the same; — I will

*mp*

## "A Little Street Where Old Friends Meet"

CHORUS

IT'S JUST A LIT-TLE STREET WHERE OLD FRIENDS MEET, I'd love to wan-der back some

*mp*

## "My Melancholy Baby"

CHORUS

Come to me, my mel-an-cho-ly ba by, Cud-dle up and don't be blue,

ON SALE AT  
ALL MUSIC  
DEALERS

COPYRIGHTED BY

**JOE MORRIS MUSIC CO.**  
1619 BROADWAY NEW YORK CITY

ON SALE AT  
ALL MUSIC  
STORES