

YorkSpace Collection

Work-Integrated Learning, Accessibility, Accommodations (WILAA)

Materials from SSHRC funded research project
UNLOC (2018-2020)



Social Sciences and
Humanities Research
Council of Canada

Conseil de recherches
en sciences humaines
du Canada

Canada

UNLOC Research Project Material

Student Diary: Exploring Accessibility in Placement

Created in 2020

Summary

As part of a UNLOC the researchers did an interview study with practitioners and students to explore accessibility in work-integrated learning. Diaries were given to student 7-10 days before the interview. The interviewer used the diaries to guide the interview process.

Associated with Publication

Epstein, I., Stephens, L., Severino, S. M., Khanlou, N., Mack, T., Barker, D., & Dadashi, N. (2020). "Ask me what I need": A Call for shifting responsibility upwards and creating inclusive learning environments in clinical placement. *Nurse Education Today*, 92, 104505. <https://doi.org/10.1016/j.nedt.2020.104505>

Document Details

Original Creator: UNLOC Research Team

Knowledge Product Creator: Hilda Smith

Published on YorkSpace: Fall 2021

UNLOC Partners

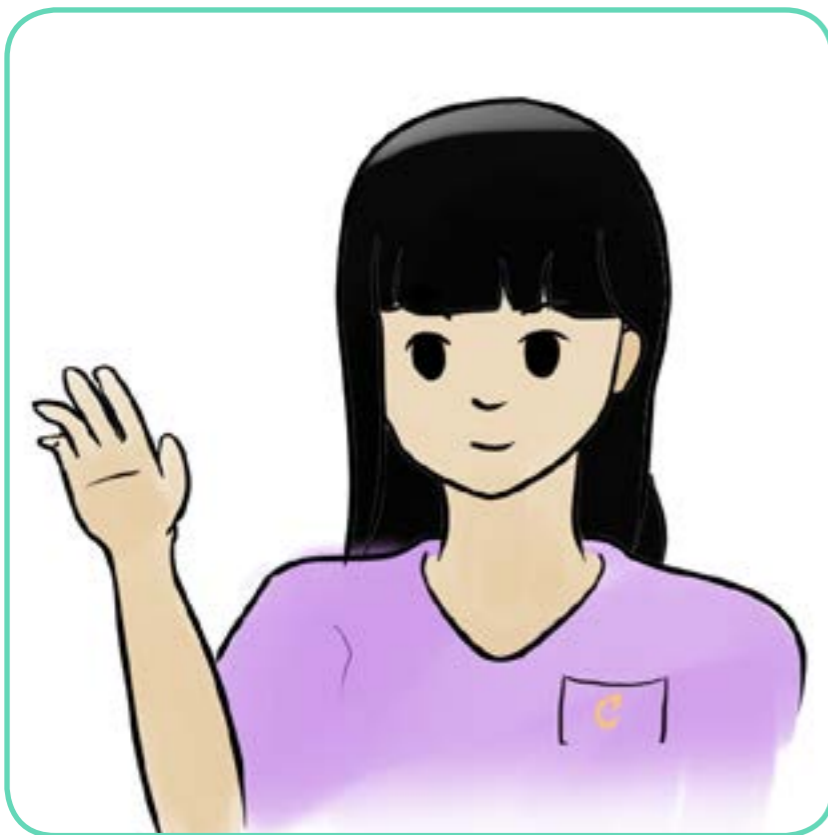


Student Diary: Exploring Accessibility in Placement © 2020 by [UNLOC](#) is licensed under [CC BY-NC 4.0](#)

The purpose of this diary is to explore the perspectives of nursing students who identify with a disability in nursing clinical placement

Throughout this booklet, we will have 3 characters, Caroline, Max and Andy. Here they have introduced themselves and will be facing challenges during their clinical placements. The characters below will help you think about different experiences you may have had in the clinical placement setting, we would like you to put yourselves in their shoes.

Please read the scenarios and stories in this booklet and complete the questions to the best of your ability



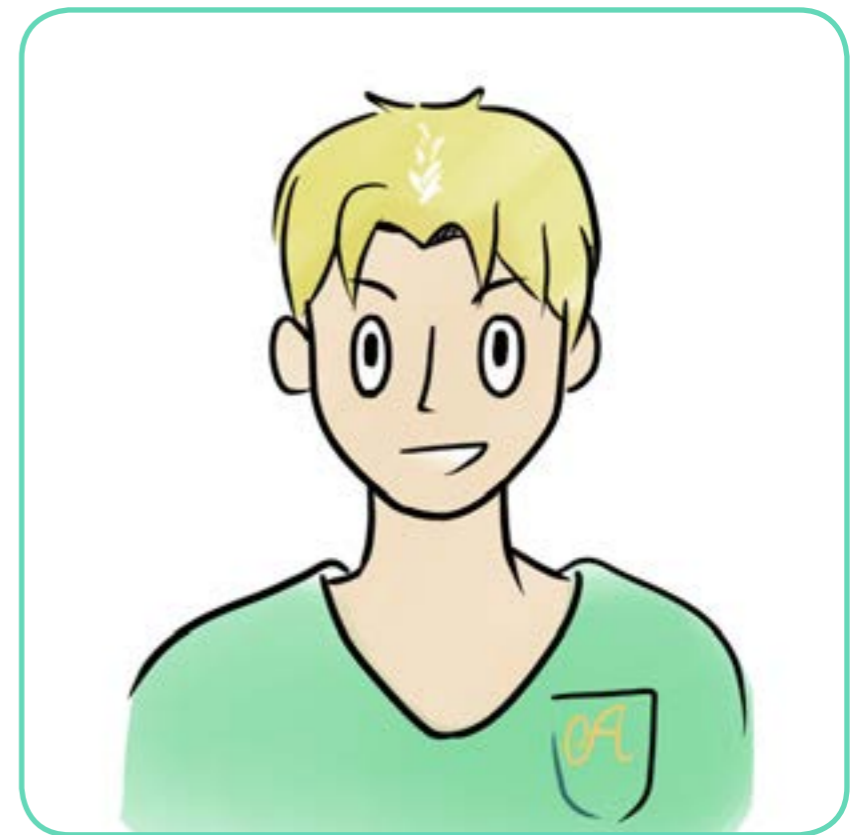
Hi I am Caroline!

I am a 2nd year nursing student.
I am in week 4 of clinical and I
identify with a disability



Hi I am Max!

I am a nursing clinical instructor



Hi I am Andy!

I'm a 2nd year nursing student.
I am in week 4 of clinical and I
identify with a learning disability

Before we go to the scenarios, we would like to know a little about you,
tell us about yourself by selecting the best answer:

1. What is your age?

20 - 25

26 - 30

31 - 50

Over 50

2. What is your gender?

Male

Female

Other

Prefer not to say

3. What program are you in?

RPN

Collaborative

IEN

2nd Degree

**4. What year are you currently
in at the nursing program**

RPN Semester 2

RPN Semester 3

BScN Year 3

BScN Year 4

Other

**5. What is your classroom
accommodation?**

Note-taking

Extra time

Quiet room

None

Other

**6. What is your accommodation
in clinical placement?**

Note-taking

Extra time

Quiet room

None

Other

**7. Are there other features of
your social identity
that could influence your
experience in nursing clinical
practice?**

Race

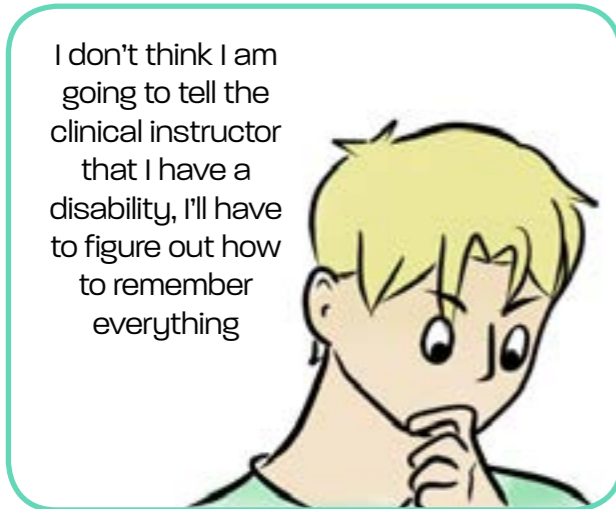
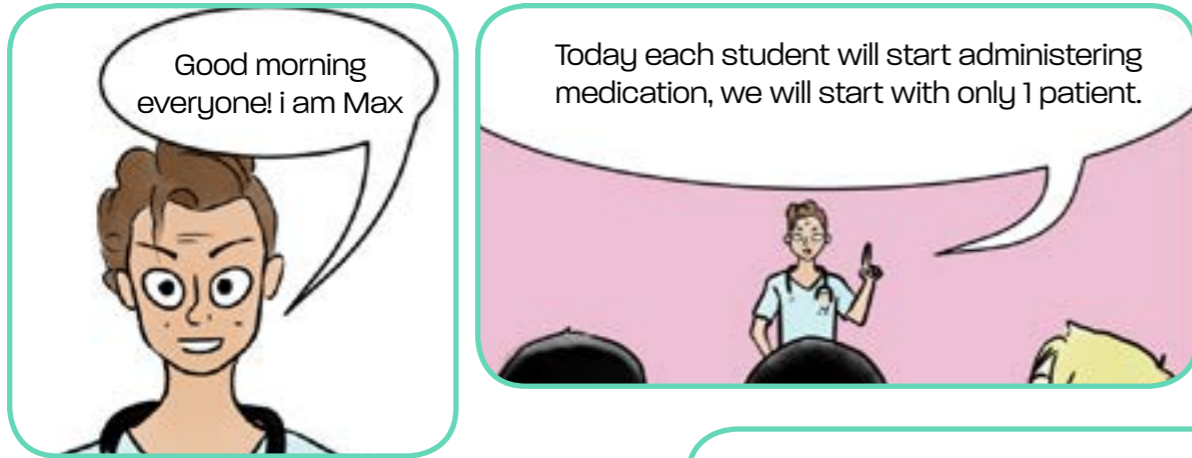
Citizenship
(immigrant, refugee, etc.)

Income level

Other

Prefer not to say

In Clinical Placement ...

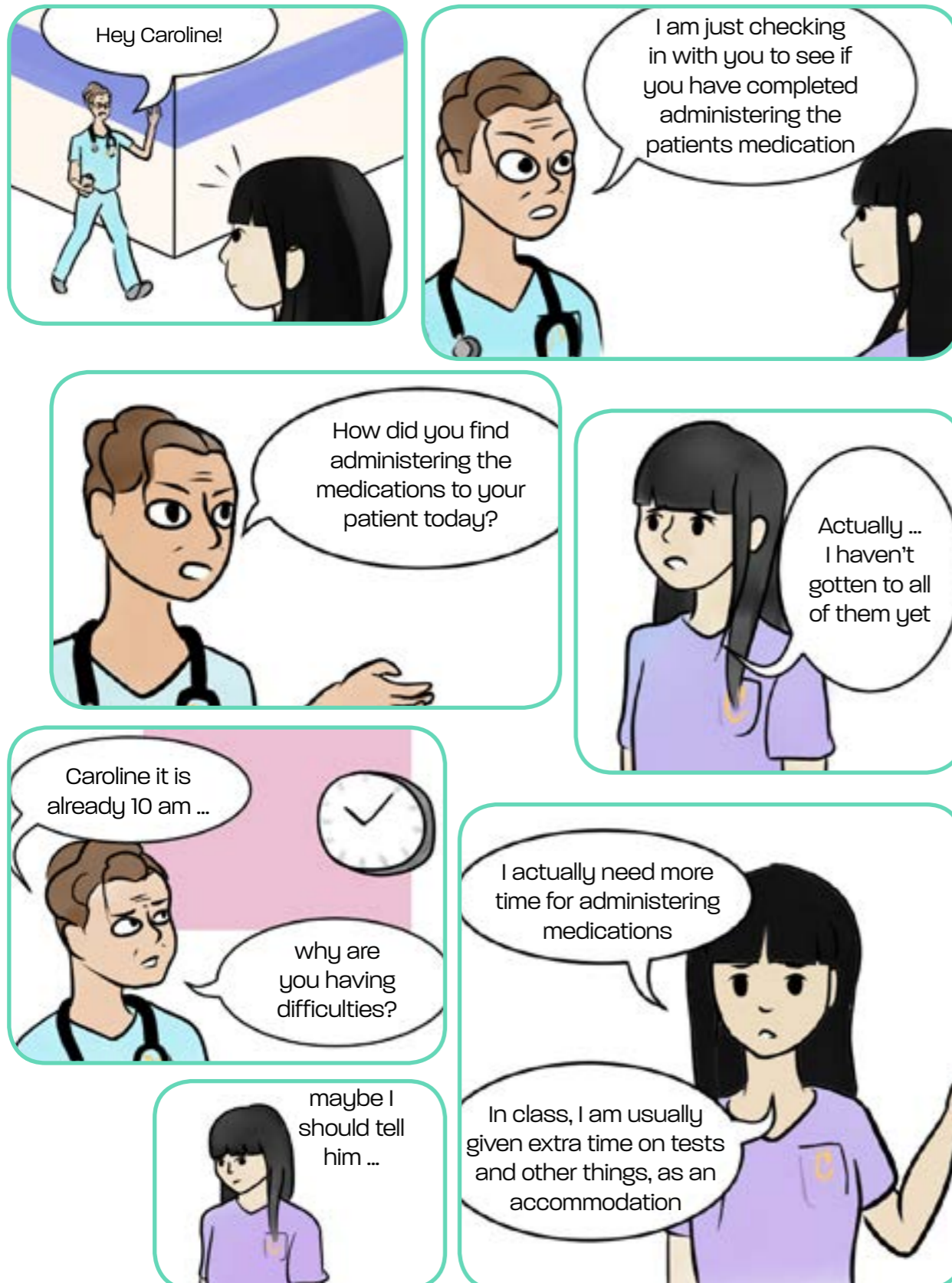


Why do you think Andy (the student) feels like he has to hide his needs for accommodations? What might you suggest as a better solution to this situation? Provide an example

Do you think Andy should have told his instructor that he needs special accommodations for administering medications? Why or why not?

How could the nursing school have prepared Andy prior to clinical placement?

In Clinical Placement ...



Can you think of a way to change this situation to better support Caroline?

What kind of accommodations do you think would have helped Caroline administer the medication?

As a student who identifies with a disability, what **technology could** Caroline use, in a nursing clinical placement? (e.g. audio recorder, note taker app, reminder tools, font magnifier)

Tell us what you think based on the previous scenarios:

I don't think I am going to tell the clinical instructor that I have a disability, I'll have to figure out how to remember everything



As a student who identifies with a disability could you explain how you feel when giving medication? Do you ever feel overwhelmed?

What do you do about it?

What do **others** do about it?



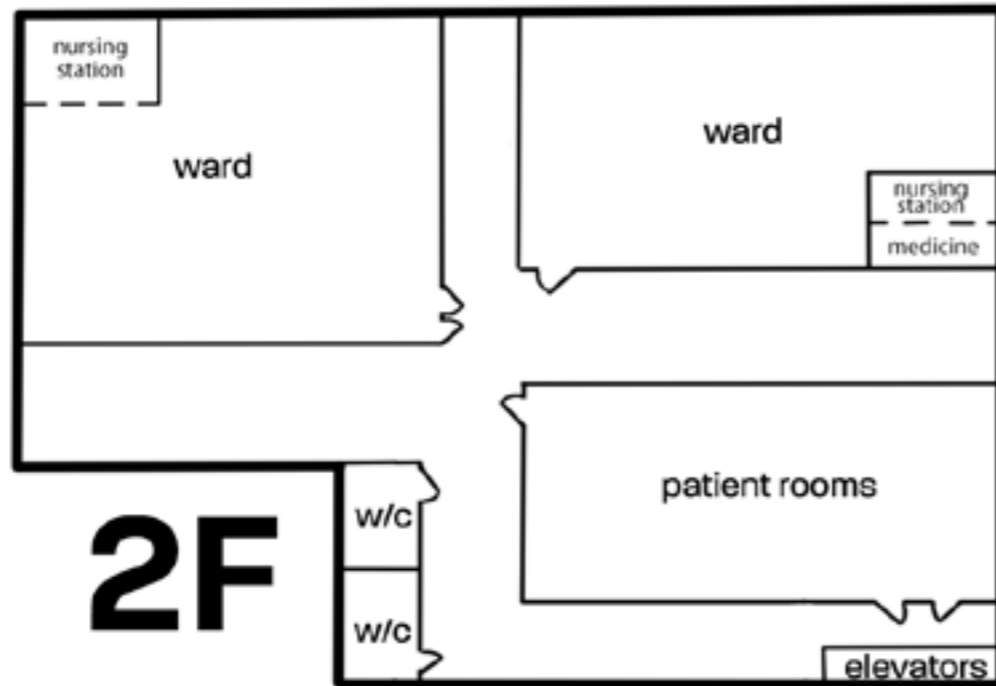
maybe I should tell him ... I actually need more time for administering medications

How did your nursing school help you in clinical in meeting your accommodation needs?

If you had full control over your circumstances what would you suggest could be done to support nursing students who identify with a disability in clinical placement?

Draw us a picture ...

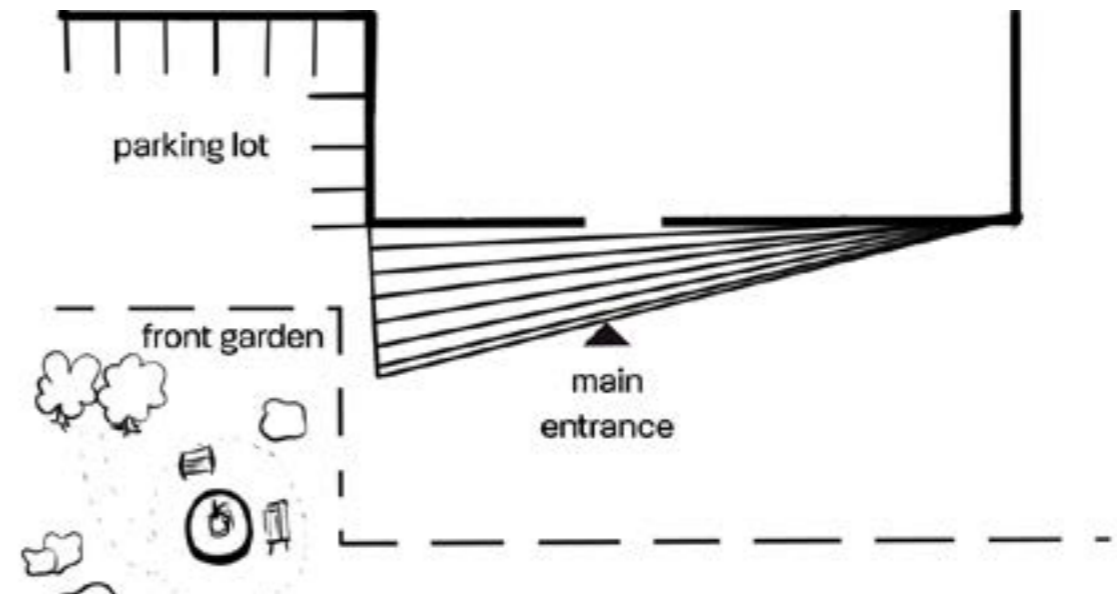
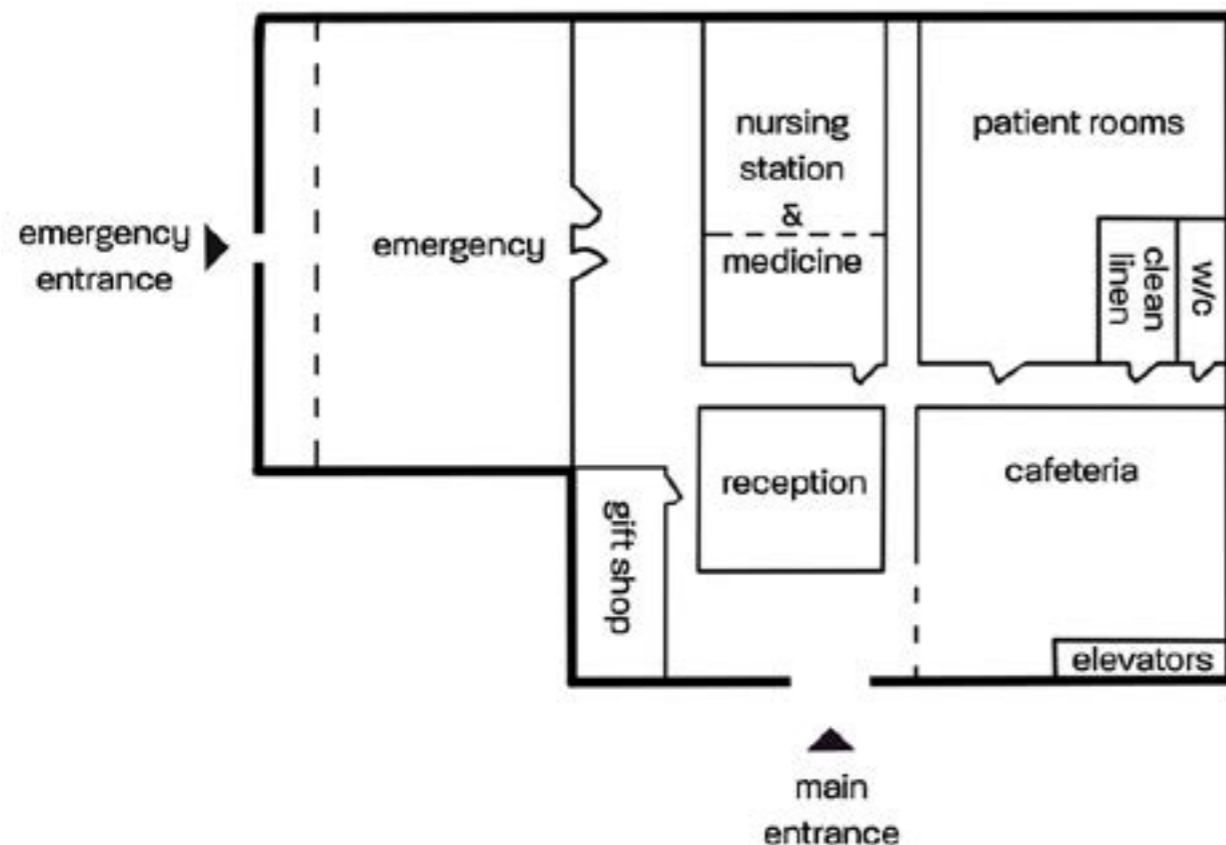
Do you sometimes feel like you need a break? Mark the spots on the map inside and outside, where you would usually go for a break if you were to feel overwhelmed.



When you are at clinical placement, do you feel safe and comfortable in the places where you take a break? Why?

Are there other places where you feel safe and comfortable?

Where do you feel **least** safe, comfortable or stressed in a nursing clinical placement?



Tell us how we did and briefly relate your experience with this diary:

1. What did you like or dislike about this diary?

2. Did you feel that the scenarios and questions were representative of your experience?

3. This diary has a user friendly interface

strongly disagree disagree neutral agree strongly agree

4. This diary is easy to navigate

strongly disagree disagree neutral agree strongly agree

5. This diary has appropriately represented issues that occur within clinical placements.

strongly disagree disagree neutral agree strongly agree

6. How important are the issues touched upon in this diary to you?

not at all important low importance neutral important very important

7. This diary does not represent real issues experienced by students with disabilities?

strongly disagree disagree neutral agree strongly agree

8. Do you feel like there is anything you need to share that was not presented in this diary?

Once you have completed this diary, click on the submit button