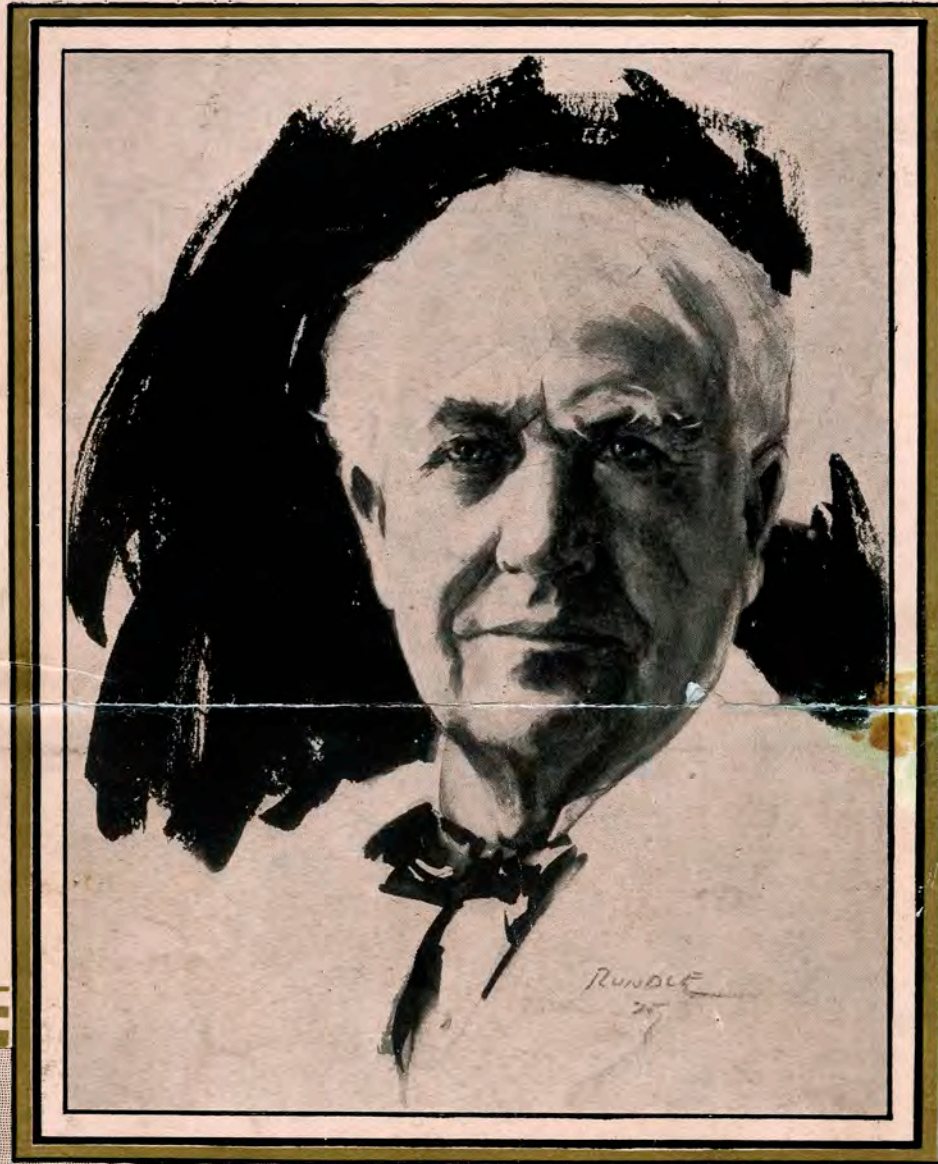


Thomas A. Edison

Miracle Man



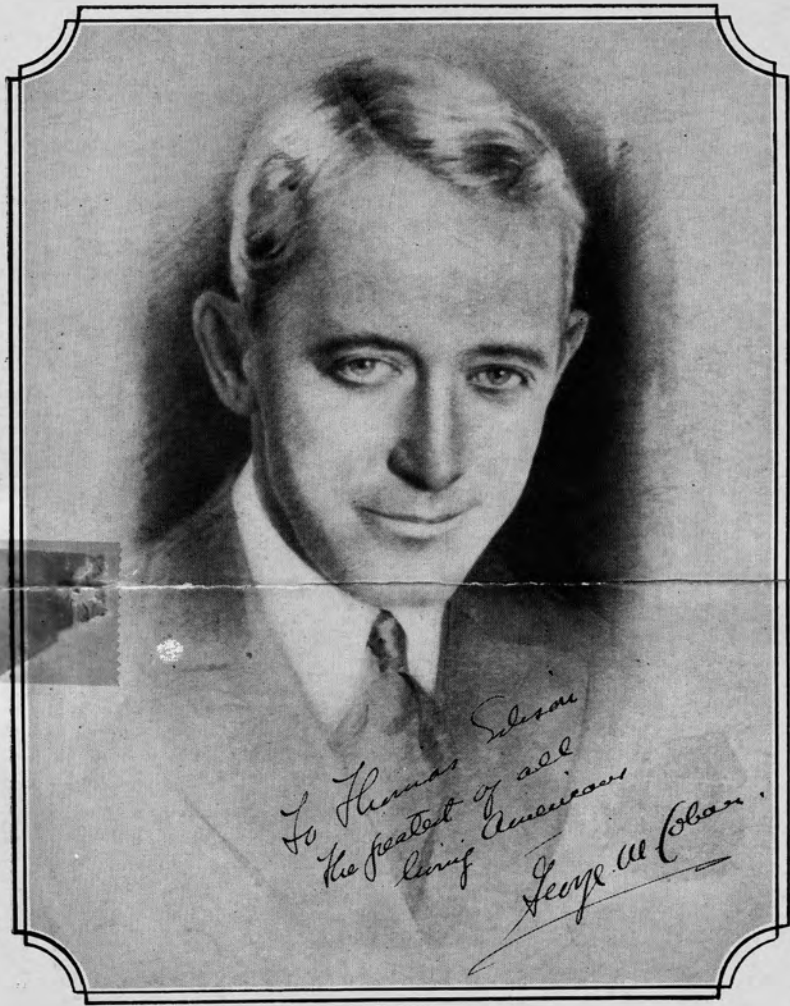
Composed as a tribute to
THOMAS A. EDISON



by **GEORGE M. COHAN**

PRE-RELEASE COPY

NOT FOR SALE OR DISTRIBUTION



To Thomas Edison
The greatest of all
living Americans
George M. Coban

Thomas A. Edison

Fox-Trot March Song
Quasi Marcia

Miracle Man

By
GEO. M. COHAN

ff

The piano introduction consists of two staves. The right hand features a series of chords and eighth-note patterns, while the left hand plays a steady eighth-note accompaniment. The key signature is two flats (B-flat and E-flat), and the time signature is 2/4.

What a fame, what a fame, what an aim,
Man of grit, man of grit, stick to it,

mf

con gva

The first vocal line is set against piano accompaniment. The melody is simple and rhythmic, with lyrics placed below the notes. The piano accompaniment continues with a consistent eighth-note pattern. Dynamics include *mf* and *con gva*.

what an aim, to live for man - kind To
nev - er quit, a real son of toil That

The second vocal line continues the melody with lyrics. The piano accompaniment remains consistent. The lyrics are: "what an aim, to live for man - kind To nev - er quit, a real son of toil That".

give for man - kind All the joys of
no fame can spoil Yan-kees all ap -

The third vocal line concludes the phrase with lyrics. The piano accompaniment continues. The lyrics are: "give for man - kind All the joys of no fame can spoil Yan-kees all ap -".

Copyright 1929 by VosBurgh's Orchestration Service, 1547 Broadway, N.Y. City.
Publishing Agent for Light's Golden Jubilee Committee

International Copyright Secured

Printed in U.S.A.

liv - ing, all he's got he's giv - ing, Work a - way, work a - way,
 plaud him, oth - er na - tions laud him, Wears a smile, all the while,

night and day, nev - er play, yet thought - ful and kind
 rank and file, know his style, a man of the soil

If Am - er - i - ca need - ed a king on a throne
 There were Ed - i - son mon - u - ments built from the start

Mis - ter Ed - i - son sits on a throne of his own.
 There's an Ed - i - son mon - u - ment built in each heart.

Refrain

Oh — say can you see — By the

The first system of the refrain features a vocal line starting with a half note 'Oh', followed by a quarter note 'say', a quarter rest, a quarter note 'can', a quarter note 'you', a quarter note 'see', a quarter rest, and a half note 'By the'. The piano accompaniment consists of chords in the right hand and a bass line in the left hand, with a repeat sign at the beginning.

light that he gives you and me — What a man he

mp

The second system continues the vocal line with a half note 'light', a quarter note 'that', a quarter note 'he', a quarter note 'gives', a quarter note 'you', a quarter note 'and', a quarter note 'me', a quarter rest, a half note 'What a man', and a half note 'he'. The piano accompaniment continues with chords and a bass line, marked with a mezzo-piano (*mp*) dynamic.

is, what a grand old "WIZ" Mo-ping gro-ping in the dark, with-

p - f

The third system continues the vocal line with a half note 'is,', a quarter note 'what', a quarter note 'a', a quarter note 'grand', a quarter note 'old', a quarter note '"WIZ"', a quarter rest, a quarter note 'Mo-ping', a quarter note 'gro-ping', a quarter note 'in the dark,', and a quarter note 'with-'. The piano accompaniment continues with chords and a bass line, marked with a piano-forte (*p - f*) dynamic.

out him we would be, There's a light to - night that's shin - ing —

The fourth system concludes the vocal line with a quarter note 'out him', a quarter note 'we would', a quarter note 'be,', a quarter note 'There's a', a quarter note 'light', a quarter note 'to - night', a quarter note 'that's', a quarter note 'shin - ing', and a quarter rest. The piano accompaniment continues with chords and a bass line.

It's his light so bright that's shin - ing — O'er the

land of the free, And the lands o'er the sea, Oh he

crescendo - a - poco - a - poco

lights the way — Mis-ter Thom-as A. — Ed-i-son mir-

f both times

1 a - cle man. Oh — man. 2

sfz

con gva



