

YorkSpace Collection

Work-Integrated Learning, Accessibility, Accommodations (WILAA)

Materials from SSHRC funded research project
UNLOC (2018-2020)



Social Sciences and
Humanities Research
Council of Canada

Conseil de recherches
en sciences humaines
du Canada

Canada

UNLOC Research Project Material

Instructor Diary: Exploring Accessibility in Placement

Created in 2020

Summary

As part of a UNLOC the researchers did an interview study with practitioners and students to explore accessibility in work-integrated learning. Diaries were given to instructors 7-10 days before the interview. The interviewer used the diaries to guide the interview process.

Associated with Publication

Epstein, I., Stephens, L., Severino, S. M., Khanlou, N., Mack, T., Barker, D., & Dadashi, N. (2020). "Ask me what I need": A Call for shifting responsibility upwards and creating inclusive learning environments in clinical placement. *Nurse Education Today*, 92, 104505. <https://doi.org/10.1016/j.nedt.2020.104505>

Document Details

Original Creator: UNLOC Research Team

Knowledge Product Creator: Hilda Smith

Published on YorkSpace: Fall 2021

UNLOC Partners

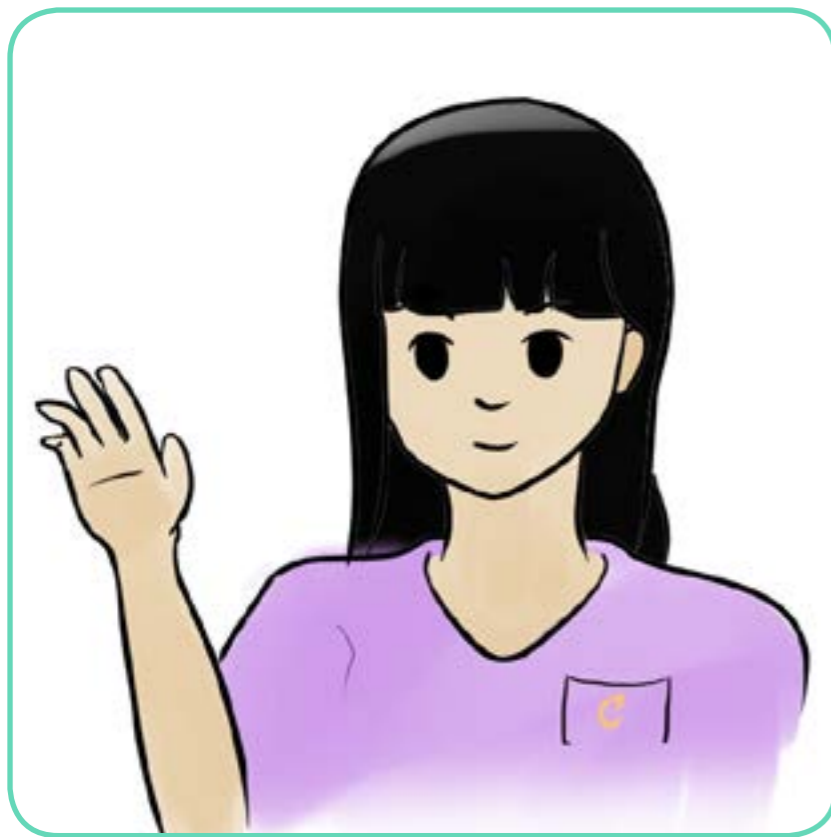


Instructor Diary: Exploring Accessibility in Placement © 2020 by [UNLOC](#) is licensed under [CC BY-NC 4.0](#)

The purpose of this diary is to explore a nursing clinical instructors perspective on teaching students who identify with a disability in nursing clinical placement

Throughout this booklet, we will have 3 characters, Caroline, Max and Andy. Here they have introduced themselves and will be facing challenges during their clinical placements. The characters below will help you think about different experiences you may have had in the clinical placement setting, we would like you to put yourselves in their shoes.

Please read the scenarios and stories in this booklet and complete the questions to the best of your ability



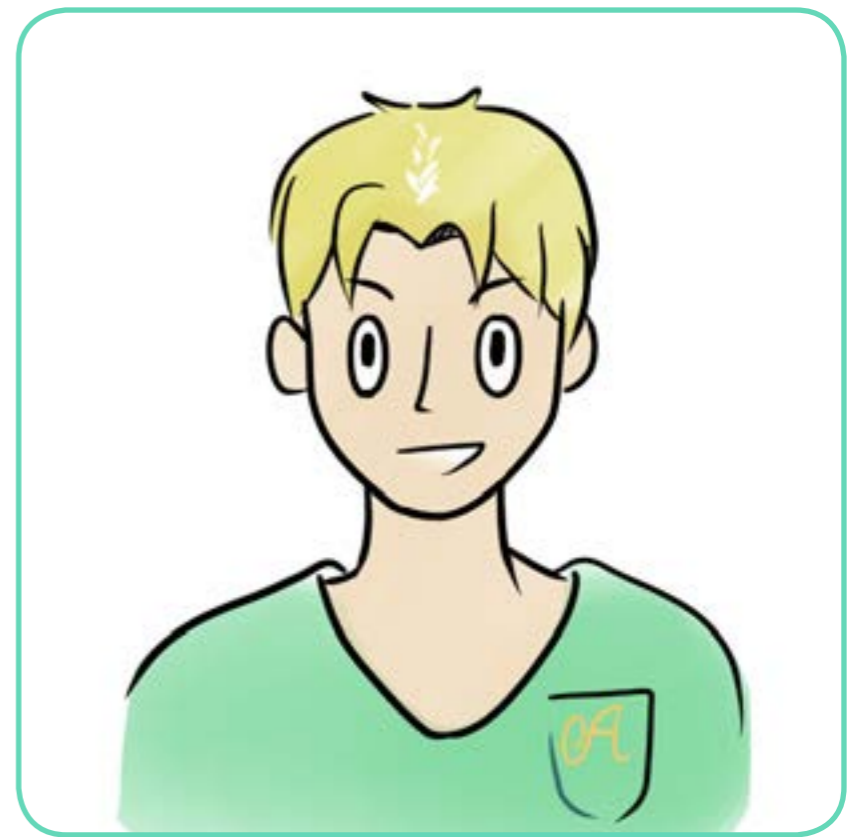
Hi I am Caroline!

I am a 2nd year nursing student.
I am in week 4 of clinical and I
identify with a disability



Hi I am Max!

I am a nursing clinical instructor



Hi I am Andy!

I'm a 2nd year nursing student.
I am in week 4 of clinical and I
identify with a learning disability

Before we go to the scenarios, we would like to know a little about you, tell us about yourself by selecting the best answer:

1. What is your age?

20 - 30

31 - 40

41 - 75

Over 75

2. What is your gender?

Male

Female

Other

Prefer not to say

3. What year in the nursing program do you teach?

RPN Semester 2

RPN Semester 3

BScN Year 3

Other

4. How many years of teaching nursing clinical experience do you have?

Less than 5 years

5 - 7 years

8 - 10 years

Over 10 years

5. Do you or someone in your family identify with a disability?

Yes

No

Prefer not to say

6. What type of accommodation do students with disabilities usually have in clinical placement?

Note-taking

Extra time

Quiet room

None

Other

7. Have you instructed a nursing student with disabilities in clinical?

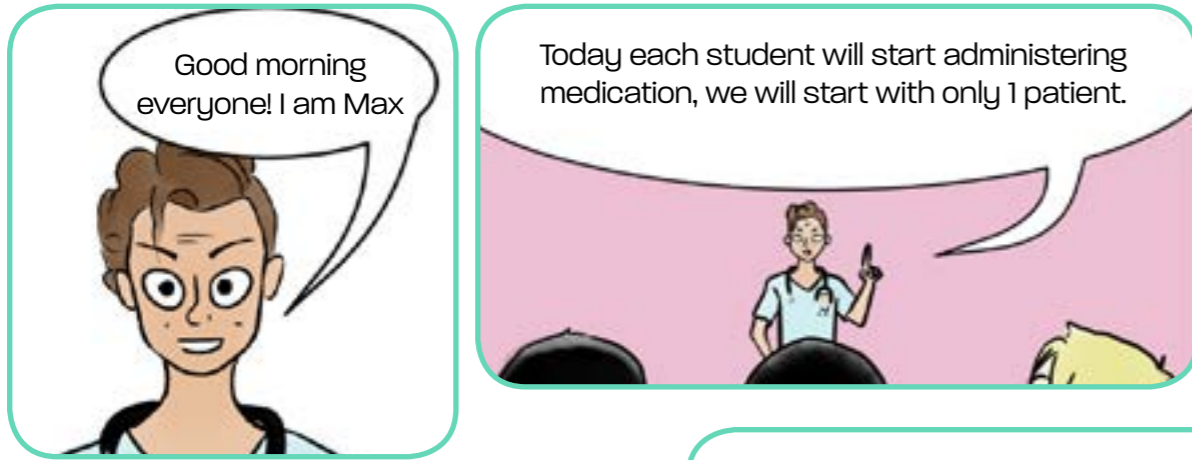
Yes

How did you know?

No

Not that I am aware of

In Clinical Placement ...



Why do you think Andy (the student) feels like he has to hide his needs for accommodations? What might you suggest as a better solution to this situation? Provide an example

Do you think Andy should have told his instructor that he needs special accommodations for administering medications? Why or why not?

How could the nursing school have prepared Andy prior to clinical placement?

In Clinical Placement ...



Can you think of a way to change this situation to better support Caroline?



What kind of accommodations do you think would have helped Caroline administer the medication?



As a clinical instructor, what assistive technology do you see already being used in the hospital (e.g. audio recorder, note taker app, reminder tools, font magnifier)



Tell us what you think based on the previous scenarios:

I don't think I am going to tell the clinical instructor that I have a disability, I'll have to figure out how to remember everything



As a clinical instructor, do you sense students who identify with disabilities feel overwhelmed in clinical placements?
Why do you think this is the case?

What would you offer those students?

What **could** you offer them? In terms of assistive technologies that are allowed in your hospital.

maybe I should tell him ...
I actually need some more time for administering medications



What do you do if during clinical a student requires accommodations that have not officially communicated to you?

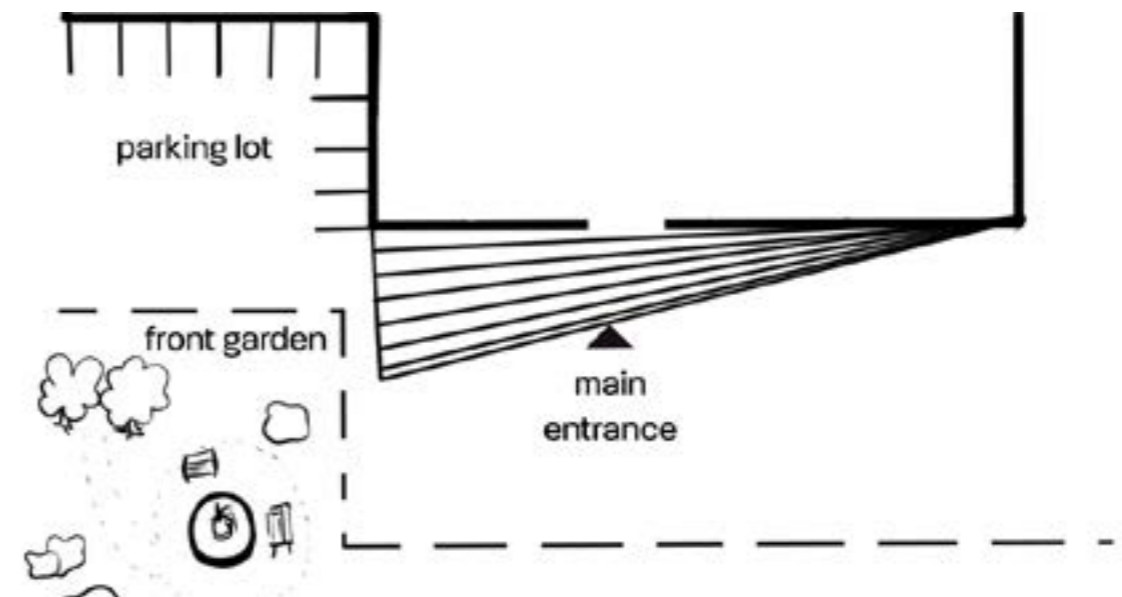
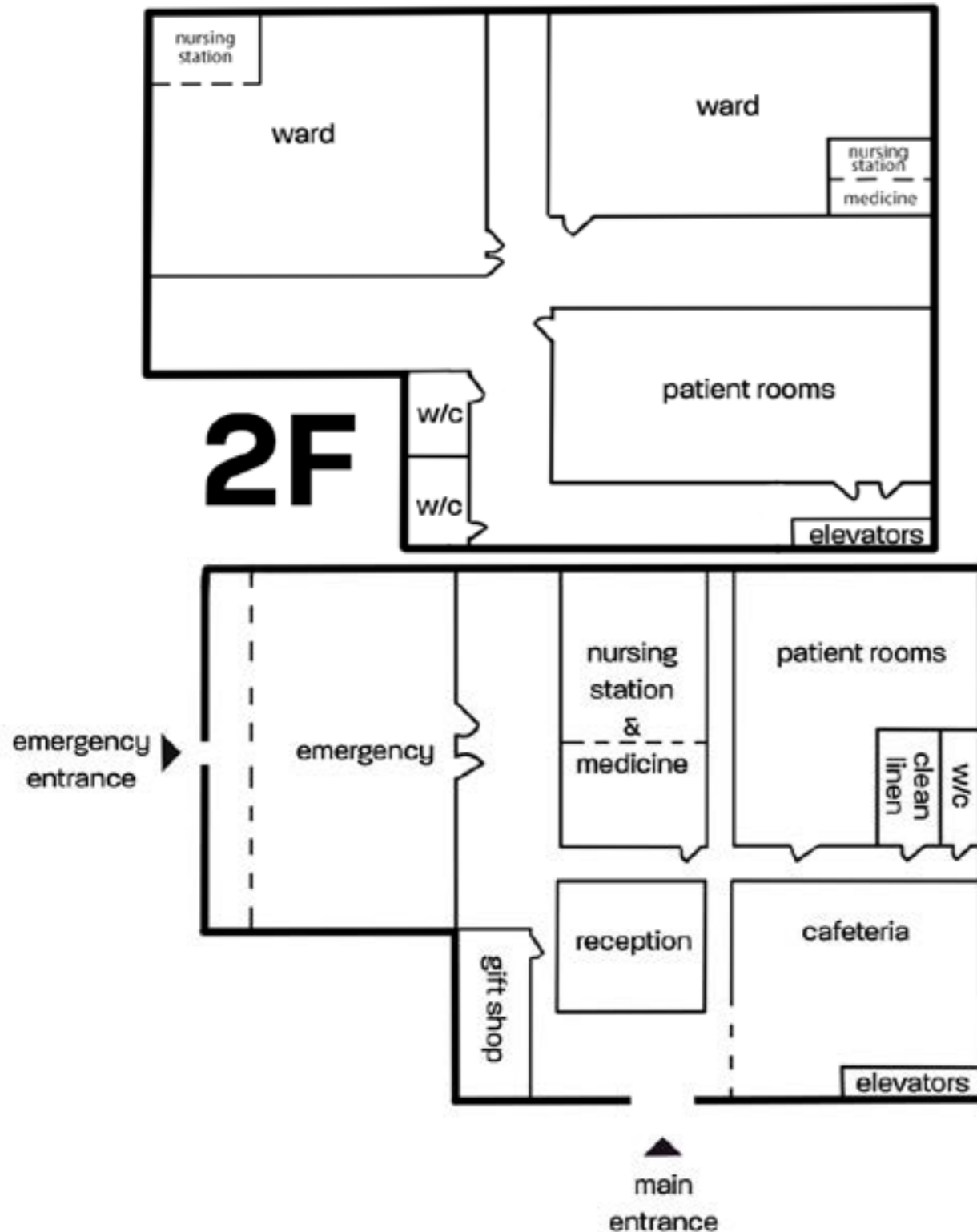
As a clinical instructor, have you ever been involved in the process of accommodating students with disability in clinical? if you were not involved why not?

Draw us a picture ...

If you notice students feeling overwhelmed in clinical placements, where do you see them usually go? Mark the spots.

Where do you believe it is appropriate for students to take a break? Explain why.

Where are the most important learning places for students in a nursing clinical placement and why? (list the places from the diagram or add your own)



Tell us how we did and briefly relate your experience with this diary:

1. What did you like or dislike about this diary?

3. This diary has a user friendly interface

8. Do you feel like there is anything you need to share that was not presented in this diary?

strongly disagree disagree neutral agree strongly agree

4. This diary is easy to navigate

strongly disagree disagree neutral agree strongly agree

5. This diary has appropriately represented issues that occur within clinical placements.

2. Did you feel that the scenarios and questions were representative of your experience?

strongly disagree disagree neutral agree strongly agree

6. How important are the issues touched upon in this diary to you?

not at all important low importance neutral important very important

7. This diary does not represent real issues experienced by students with disabilities?

strongly disagree disagree neutral agree strongly agree

Once you have completed this diary, click on the submit button