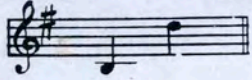
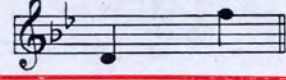


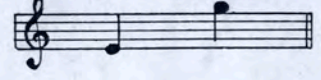
BASS OR CONTRALTO IN G



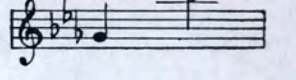
BARITONE OR ALTO IN B<sup>b</sup>



HIGH BAR. OR MEZZO SOP. IN C



TENOR OR SOP. IN E<sup>b</sup>



INTRODUCED BY AND DEDICATED TO:  
**MR. WILLIAM WADE HINSHAW**  
BARITONE OF METROPOLITAN OPERA CO. NEW YORK CITY.

# Mime

*A Song*

WORDS BY  
JAMES W. MCGEE  
AND  
PAUL BENEDEK

MUSIC BY  
**ALFRED SOLMAN**

COMPOSER OF  
"IF I HAD A THOUSAND LIVES TO LIVE" ETC.



THE CRITERION QUARTETTE  
MESSRS. QUINE, SNOW, NOEKER, DUMAS



JOE MORRIS MUSIC CO.  
130 WEST 37<sup>th</sup> ST. NEW YORK

By the composer of "If I Had A Thousand Lives To Live"

# "MINE"

Words by  
JAMES W. M<sup>c</sup> GEE  
and  
PAUL BENEDEK.

Alto or Baritone in B $\flat$

Music by  
ALFRED SOLMAN.

Andante moderato.  
*legato*

*ff* *ff* *dim* *mf* *rit*

Ped. \*

Detailed description: This block contains the piano introduction for the song. It consists of two staves, treble and bass clef, in a B-flat major key signature. The tempo is marked 'Andante moderato' and the texture is 'legato'. The music begins with a forte (*ff*) dynamic, featuring a series of chords and moving lines. It then transitions through a decrescendo (*dim*) to a mezzo-forte (*mf*) dynamic, ending with a ritardando (*rit*) marking. Pedal points are indicated with 'Ped.' and asterisks.

If you could on - ly read my heart, dear,  
The gold-en hopes that oft would cheer me,

*a tempo*  
*p* *p* *f* *p*

Ped. \*

Detailed description: This block contains the first vocal line and its piano accompaniment. The vocal line is in a B-flat major key signature and begins with a section marked 'a tempo'. The piano accompaniment features a series of chords and moving lines, with dynamics ranging from piano (*p*) to forte (*f*) and back to piano (*p*). Pedal points are indicated with 'Ped.' and asterisks.

Its joys and sor - rows too \_\_\_\_\_ A ten-der tale it would im-  
Still in my heart re - main \_\_\_\_\_ The gold-en hours when you were

*pp* *p*

Ped. \*

Detailed description: This block contains the second vocal line and its piano accompaniment. The vocal line continues the melody from the first line, with lyrics that are partially obscured by lines. The piano accompaniment features a series of chords and moving lines, with dynamics ranging from pianissimo (*pp*) to piano (*p*). Pedal points are indicated with 'Ped.' and asterisks.

Copyright transferred 1912 to Joe Morris Music Co. 145 W. 45<sup>th</sup> St. New York.  
Copyright MCMXI by Carl Laemmle Music Co. New York Chicago.  
International Copyright Secured.

- part, dear, Of my great love for you; ———  
 near me, In mem-ry live a - gain; ———

*f* *p* *rit* *a tempo.*

With-in my soul so long for - sak - en, Love's bright-est beams would  
 And tho' to-day may bring me sad - ness, The star of Hope will

*f* *p*

*Red.* \*

shine, ——— And joy that slum-bers would a - wak - en,  
 shine, ——— And all the world will ring with glad - ness,

*dolce.* *p*

If on - ly you were mine! ———  
 If on - ly you'll be mine! ———

*cresc.* *f* *mf* *f* *mf* *rallentando.*

Animato

Mine \_\_\_\_\_ when the dawn is break - ing Mine \_\_\_\_\_ in my dreams at

*f* *a tempo.* *mf* *a tempo.* *p* *mf*

night, \_\_\_\_\_ Mine \_\_\_\_\_ when the birds are

*p* *f* *il Basso marcato*

wak - - ing, \_\_\_\_\_ Mine \_\_\_\_\_ when the stars are

*f* *p* *f* *ff* *ritard.* *cresc al*

bright; \_\_\_\_\_ Mine \_\_\_\_\_ while the years are fly - ing,

*a tempo mf animato* *f* *sfz* *f* *mf*

Mine with a glo-ry di - vine,

*rit e marcato*

*il Basso marc.*

*Ped.* \* *Ped.* \*

Mine with a love nev-er dy - ing

*ff* *fff* *f*

*Ped.* \* *Ped.* \*

Mine now and al - ways mine!

*Moderato*

*f ritard ff a tempo. accel f*

*Ped.* \* *Ped.* \*

mine!

*ritard a tempo. accel ff ff*

*Ped.* \* *Ped.* \*

TRY THIS ON YOUR PIANO  
Just A Dream Of You, Dear.

Words by  
C. F. McNAMARA

Music by  
F. HENRI KLIICKMANN.

Valse Andte.

8-----  
rit.

The piano introduction is in 3/4 time, starting with a forte (f) dynamic. It features a waltz-like melody in the right hand and a supporting bass line in the left hand. The piece concludes with a ritardando (rit.) and a fermata over the final chord.

Slowly.

Tho' wak-ing I dream, in the sun - set gleam Of the fad - ing sum - mer  
In fan - cy I stand on the sun - lit strand, Where the tide - waves come and

The first system of the vocal and piano accompaniment. The vocal line is in a soprano clef, and the piano accompaniment is in a grand staff. The tempo is marked 'Slowly' and the dynamic is piano (p).

day, — I lin - ger once more on the dear, home shore, As the fall - ing  
go; — There steals to my ear, such a sweet voice near, That I loved long,

The second system of the vocal and piano accompaniment, continuing the melody and accompaniment from the first system.

sha - dows play. — , My thots fond - ly roam with the white, dash - ing  
long a - go. — The dream is soon o'er, and the bright, sun - ny

The third system of the vocal and piano accompaniment. The piano accompaniment includes a mezzo-forte (mf) dynamic marking.

Copyright, MCMX, by Victor Kremer. Chicago - New York.  
British Copyright.

Copyright transferred 1912 to Joe Morris Music Co. 130 W. 37th St., New York

FOR SALE BY ALL DEALERS