

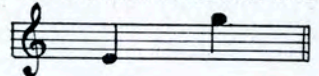
BASS OR CONTRALTO IN G



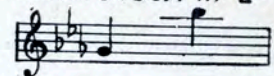
BARITONE OR ALTO IN B<sup>b</sup>



HIGH BAR. OR MEZZO SOP. IN C



TENOR OR SOP. IN E<sup>b</sup>



INTRODUCED BY AND DEDICATED TO  
**MR. WILLIAM WADE HINSHAW,**  
BARITONE OF METROPOLITAN OPERA CO. NEW YORK CITY.

# Mime

*A Song*

WORDS BY  
JAMES W. MCGEE  
AND  
PAUL BENEDEK

MUSIC BY  
**ALFRED SOLMAN**

COMPOSER OF  
"IF I HAD A THOUSAND LIVES TO LIVE" ETC.



WHALEY, ROYCE & CO.

LIMITED

MUSIC AND MUSICAL INSTRUMENTS

237 YONGE ST., TORONTO.

JOE MORRIS MUSIC CO.

130 WEST 37TH ST. NEW YORK



By the composer of "If I Had A Thousand Lives To Live"

# "MINE"

Words by  
JAMES W. M<sup>c</sup> GEE  
and  
PAUL BENEDEK.

Alto or Baritone in B $\flat$

Music by  
ALFRED SOLMAN.

*Andante moderato.*  
*legato*

*ff* *ff* *dim* *mf* *rit*

*a tempo* *p* *p* *f* *p*

*pp* *p*

If you could on - ly read my heart, dear,  
The gold-en hopes that oft would cheer me,  
Its joys and sor - rows too \_\_\_\_\_ A ten-der tale it would im-  
Still in my heart re - main \_\_\_\_\_ The gold-en hours when you were

*Ped.* \*

Copyright transferred 1912 to Joe Morris Music Co. 130 W. 37<sup>th</sup> St. New York.  
Copyright MCMXI by Carl Laemmle Music Co. New York Chicago.  
International Copyright Secured.

- part, dear, Of my great love for you; ———  
 near me, In mem-ry live a - gain; ———

*f* ——— *p* *rit* *a tempo.*

With-in my soul so long for - sak - en, Love's bright-est beams would  
 And tho' to-day may bring me sad - ness, The star of Hope will

*f* ——— *p*

*And.* \*

shine, ——— And joy that slum-bers would a - wak - en,  
 shine, ——— And all the world will ring with glad - ness,

*dolce.* *p*

If on - ly you were mine!  
 If on - ly you'll be mine!

*cresc.* *f* *mf* *f* *mf* *rallentando.*

**Animato**

Mine when the dawn is break - ing Mine in my dreams at

*sf* *a tempo.* *mf* *a tempo.* *p* *mf*

night, Mine when the birds are

*p* *f*

*il Basso marcato*

wak - - ing, Mine when the stars are

*f* *p* *f* *ritard.* *ff*

*cresc al*

bright; Mine while the years are fly - ing,

*a tempo mf animato* *f* *sf* *f* *mf*

Mine with a glo-ry di - vine,

*rit e marcato*

*il Basso marc.*

Mine with a love nev-er dy - ing

*ff* *fff* *f*

Mine now and al - ways mine!

*Moderato*

*f ritard* *ff* *f a tempo.* *accel* *f*

mine!

*ritard* *a tempo.* *accel* *ff* *ff*

# TRY THIS ON YOUR PIANO

"Sweet Dreams, My Love, Sweet Dreams."

Words by ARTHUR LONGBRAKE.

Music by ED. EDWARDS.

## Chorus.

you. ———  
this. ——— Sweet dreams, my love, sweet dreams, ——— And

*ff* — *mf* *melody marcato*

may they be of me, ——— For

all my own are but of thee, ——— Sweet

dreams, — my love, ——— sweet dreams. ———

Copyright 1909 by Jos. Morris  
Rights for Mechanical Instruments reserved

### FOR SALE BY ALL DEALERS