

*There is no question in my mind but that
The way of the Cross will prove as great a
popular success as Adams "Holy City" rightly
so, for it is noble & soul inspiring to a degree*
3/26/01 *Whitney Mockridge*
London, England

THE WAY OF THE CROSS



A Sacred Song

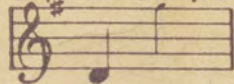
The Words by

JAMES O'DEA

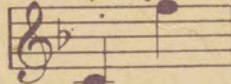
The Music by

ALFRED SOLMAN

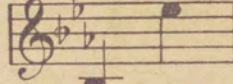
Soprano or Tenor in G



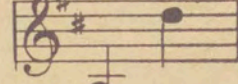
Mezzo Sop. or high Bar. in F



Alto or 2nd Baritone in E



Contralto or Bass in D



Price 75c

Ted Browne Music Co.
325 MADISON STREET
Chicago

THE WAY OF THE CROSS

Poem by JAS. O'DEA

Mezzo Soprano or Baritone.

Music by ALFRED SOLMAN.

Andante maestoso

Piu lento.

musical notation for the first system, including vocal line and piano accompaniment.

Last night in a dim lit

musical notation for the second system, including vocal line and piano accompaniment.

chap-el, Where I had gone to pray— I saw in a glo-rious vi-sion, The

musical notation for the third system, including vocal line and piano accompaniment.

scenes of a by-gone day. I stood 'mid the groves and

musical notation for the fourth system, including vocal line and piano accompaniment.

temp-les Of a cit-y vast and wide, And my

musical notation for the fifth system, including vocal line and piano accompaniment.

soul was stirred, As me thought I heard Sweet voic-es on high that cried:

musical notation for the sixth system, including vocal line and piano accompaniment.

Hail hail to your Sav-iour, Je-ru-sa-lem! Hail to your King and Lord!

Praise ye his great-ness! Bow ye be-fore Him! Hail! to your Sav - - iour, to your King and

mf *cresc.* *f* *cresc.* *do al* *ff* *fff* *ff sempre*

Lord! And then through the mists be-fore me I

ff *f* *p* *pp piu lento*

saw and un - der - stood — The grief of the King whose pres - ence Gave

p *pp*

mirth to — the mul - - ti - tude. — Led on by the Ro - - man

mf *con moto*

sol - diers To a drear and des - 'late hill — To His

f

death went He While the sounds of glee, A-round me rang up - ward still: —

ff sempre *mf* *rit. e ben marc.*

Moderato. (Con moto)

Hail! hail! to your Sav - iour, Je - ru - sa - lem Hail to your

f a tempo, animato *ff*

King and Lord! Praise ye His great - ness!

mf *f*

Bow ye be - fore Him Hail! to your Sav - iour, To your King and

f *ff maestoso* *ff*

Lord!

a tempo *ff* *Con dolore*

The

Lento *lento p* *p* *pp* *ppp*

Way of the Cross I fol - lowed To Cal - va - ry's brow at last. Where

Con dolore *p* *mf* *p*

Cross and the King tri - umph - ant I saw ere the vi - sion

piu mosso *f*

passed And yet from that an - cient Cit - y, Yes'

il basso marc. *ff*

e'en to the dist - ant ends Of the world so wide. to that

mf *f* *mf* *f* *ff* *sempre*

King who died, This greet - ing of love as - cends:

ff *mf* *f rit. ben marc.*

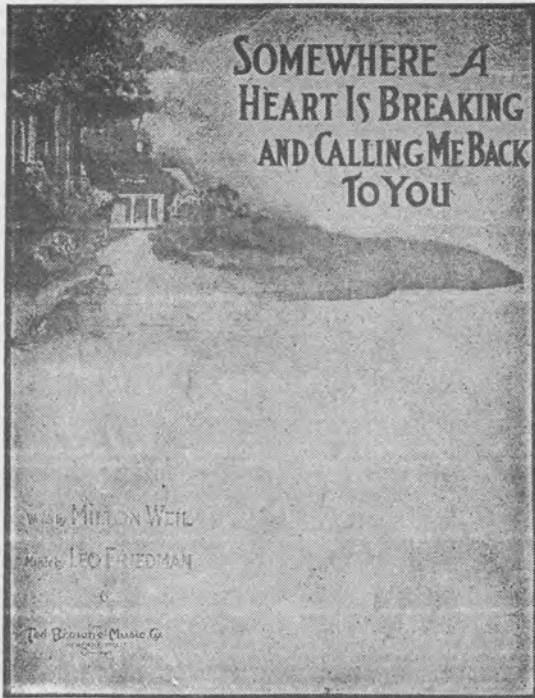
Hear us Lord! Plead - ing we turn to Thee, Know - ing our sins brought forth Thy loss! Guide us, Lord,

Grandioso *PRAYER* *Finale* *f* *a tempo* *f*

and in Thy good - ness show, show us the Way of the Cross!

fff *ff e accel.* *ff* *sf* *fff*

THE BIG WALTZ-BALLAD SUCCESS OF THE YEAR



“SOMEWHERE A HEART IS BREAKING AND CALLING ME BACK TO YOU”

You will note the melody of this beautiful ballad is written by Leo Friedman, composer of such big hits as “Meet Me To-Night In Dreamland,” “Let Me Call You Sweetheart,” “When I Dream of Old Erin.” Mr. Friedman thinks this new song is his best effort and the way the public is buying it indicates that Mr. Friedman’s judgment in this matter is equally as good as his melody. It is truly a wonderful seller and a copy should be in every home.

CHORUS

Some-where a heart is break - ing And call - ing me back, to you, ———

Fond mem - o - ries a - wak - ing Each hap - py hour we knew. *rit.* *a tempo*

I hear a voice so ten - der Mak - ing my dreams come true; ——— Some-where a

Copyright MCMXVII by Ted Browne Music Company, Chicago..

British Copyright Secured.

The above song can be obtained wherever music is sold, but if for any reason your dealer cannot supply you, send 15c (stamps accepted) and copy will be sent you by return mail.

Send Orders to TED BROWNE MUSIC CO.,

217 West Madison Street, CHICAGO, ILL.