

Little Mother

Irene Colter

WITH UKULELE ARRANGEMENT

Lullaby Waltz

*From the
William Fox Production*

FOUR SONS

by

ERNO RAPEE and LEW POLLACK

WRITERS of
"CHARMAINE"
"DIANE" etc.



Featured by
BEN BERNIE



Sherman,  & Co.
SAN FRANCISCO

MADE
IN
USA



BESIDE A LAZY STREAM

(ALL THE WORLD WAS MINE)

Tune Uke
G C E A

Words and Music by
BUD COOPER, NICK LUCAS
and SAM H. STEPT

Chorus

F C7 F dim. Bb F Bbm+6 F dim. Bbm+6 F

When I told you of my love — Un-der star-lit skies a - bove, Be-side a

G7 C7 F C7 F dim. Bb

la - zy stream, — All the world was mine — — — — — When I gent - ly pressed your

F F7 Am Am Alt. Am Am Fm+6 Ab7 C dim. G7

hand — You just seem'd to un-der-stand, Be-side a la - zy stream — All the world was

Copyright MCMXXVIII by Sherman, Clay & Co., San Francisco
International Copyright Secured and Reserved
Keith, Prowse & Co. Ltd., London, W.1. — Allan's Proprietary, Ltd., Melbourne, Australia

PUBLISHED BY

Sherman,  & Co.

SAN FRANCISCO

Little Mother

3

Tune Ukulele
or Banjulele Banjo
A D F# B
Put Capo on 1st fret

By ERNO RAPEE and
LEW POLLACK

Valse moderato

Musical notation for the instrumental introduction, featuring a treble and bass clef with a 3/4 time signature. The melody is in G minor (three flats) and consists of several measures of chords and single notes.

Ukulele Arr. by MAY SINGHI BREEN
"The Ukulele Lady"

VOICE

Musical notation for the first vocal line, including a treble clef, a 3/4 time signature, and piano accompaniment. The lyrics are: "When the day is done the Lit - tle Moth - er dear, it's"

Musical notation for the second vocal line, including a treble clef, a 3/4 time signature, and piano accompaniment. The lyrics are: "set - ting sun sinks in - to a sky of blue There's a vi - sion of The ve - ry clear What you've done thru all these years Yet it's splen - did too To"

Musical notation for the third vocal line, including a treble clef, a 3/4 time signature, and piano accompaniment. The lyrics are: "one I love Lit - tle Moth - er dear I mean you I can see a trace in think that you Can still wear a smile thru your tears Ev - 'ry night I pray, there'll"

your sweet face Of the one who un - der - stands And the
come a day When I gaze on all your charms Lit - tle

work you've known is clear - ly shown By the wrin - kles in your toil worn hands
Moth - er mine just once a - gain Let me nes - tle close - ly in your arms

rit.

CHORUS

Lit - tle Moth - er Moth - er mine, There's no oth - er

p - mf

Moth - er mine, Al - though I know that we are far a - part,

ad. lib.

No one can take you dear, out of my heart, Lit-tle Moth-er

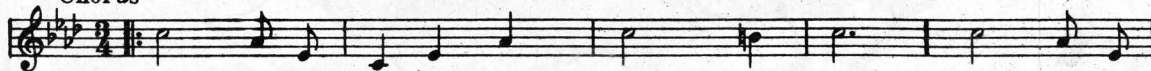
You're di - vine, Keep on smil-ing all the time

I pray that "He," spares you for me — Lit-tle Moth-er Moth-er

mine. Moth - er Moth-er - mine.

PALS OF LONG AGO

Chorus



Where are you now, Pals of long a - go, Friends that were

Copyright MCMXXVII by Sherman, Clay & Co., San Francisco.

IF I SHOULD LOSE YOU

Ballad Fox Trot Hit
with an appeal.

Chorus



If I should lose you — If ev-er I lose you, — Where could I wan - der, — what could I do? —

Copyright MCMXXVII by Sherman, Clay & Co., San Francisco.

DOLL DANCE

Fox Trot Hit



What a pe - cul - iar tune, Thrill-ing me night and noon, What a pe - cul - iar tune. — Has such a

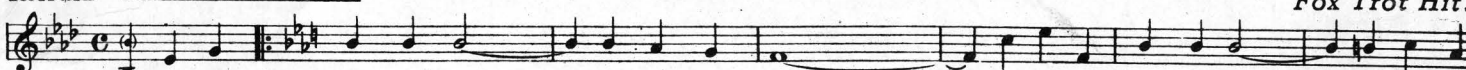
Copyright MCMXXVII by Sherman, Clay & Co., San Francisco

THE WINDING TRAIL

Melodious
Fox Trot Hit.

Refrain

Melody of "Old Refrain".
Published by Special Permission of
Carl Fischer Inc. New York



I'm on the wind - ing trail — to home sweet home — I'm on the home - ward road — no more to

Copyright MCMXXVII by Sherman, Clay & Co., San Francisco

SOMEBODY LIED ABOUT ME

Waltz Ballad.

Chorus



When some - bod - y told you that I've been un - true, Some - bod - y lied a - bout

Copyright MCMXXVII by Sherman, Clay & Co., San Francisco

SCHOOL DAY SWEETHEARTS

A favorite everywhere.

CHORUS

a tempo



Can't we be the same school-day sweet - hearts? Let us wan - der back once more, — Thru the lit - tle

Copyright MCMXXVIII by Sherman, Clay & Co., San Francisco

CHARMAINE

Waltz Hit with Ukulele arrangement.

CHORUS



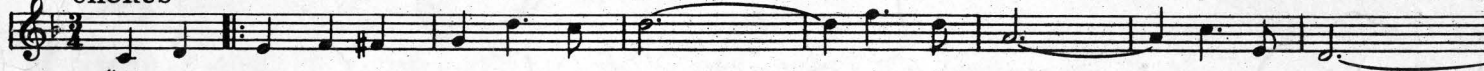
I won - der why you keep me wait - ing, Char - maine — cries in vain, — I won - der when

Copyright 1926 by BELWIN, Inc., N.Y.C.
Copyright assigned 1927 to Sherman, Clay & Co., San Francisco

DIANE

Melodious Waltz Hit.

CHORUS



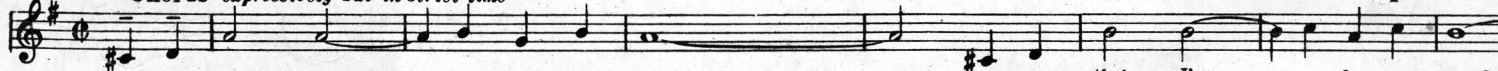
"I'm in Heav - en when I see you smile — Smile for me — my Di - ane —

Copyright MCMXXVII by Sherman, Clay & Co., San Francisco

DO YOU LOVE ME?

Fox Trot Ballad
with a punch.

Chorus *expressively but in strict time*

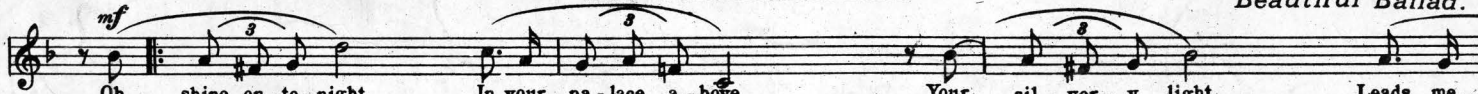


Do you love me — when skies are gray? — Ev - en tho' I'm — so far a - way? —

Copyright MCMXXVII by Sherman, Clay & Co., San Francisco.

ESTRELLITA

Beautiful Ballad.



Oh shine on to - night In your pa - lace a - bove Your sil - ver - y light Leads me
Tu e - res es - tre - lla mi fa - ro de a - mor Tu sa - bes que pron - to he

Copyright MCMXXVII by Sherman, Clay & Co., San Francisco

Copies for sale
wherever music is sold.

PUBLISHED BY

Sherman, Clay & Co.

SAN FRANCISCO

These numbers can also
be had for your phonograph
and player piano.