

EXPORT EDITION.

# ANNIE

(YOU'RE JUST LIKE MY MAMMY)

*L. Seymour.*

## SONG FOX-TROT

WRITTEN & COMPOSED BY

WYNN STANLEY  
ANDREW ALLEN  
AND

JOS. GEO. GILBERT

SUNG  
WITH  
ENORMOUS SUCCESS  
BY



# MISS FLORRIE FORDE

Copyright.

Price 2/- net.

LAWRENCE WRIGHT MUSIC CO

Denmark Street (Charing Cross Rd.)

LONDON, W.C.2.

Australia & New Zealand,

E.W. COLE, Book Arcade, MELBOURNE.

Cables "Vocable London."

(Printed in England)



*L. Seymour  
Dubban  
1926*

# ZeZ Confrey

SEE THE MUSICAL WORLD GUESSING WHEN HE COMPOSED "KITTEN ON THE KEYS"  
EV'RY REAL PIANIST SIMPLY HAD TO PLAY IT TO BE IN THE FASHION.

A WELL KNOWN IMPRESSARIO SAYS:- *Before I engage a Pianist  
I always test him on the NEW CONFREY SOLOS "GREENWICH WITCH"  
"COAXING THE PIANO," ETC.- IF HE CANNOT PLAY THEM THEN HE IS NOT IN THE RUNNING.*

**GREENWICH WITCH.** ZEZ CONFREY.

Allegro. *mf*

Musical score for 'Greenwich Witch' in B-flat major, 2/4 time. It consists of two systems of piano accompaniment. The first system has a treble clef with a melody of eighth and sixteenth notes, and a bass clef with a steady accompaniment. The second system continues the piece with similar rhythmic patterns and includes a triplet in the treble.

**COAXING THE PIANO.** ZEZ CONFREY.

Allegro. *p*

Musical score for 'Coaxing the Piano' in B-flat major, 2/4 time. It consists of two systems of piano accompaniment. The first system features a treble clef with a melody of eighth notes and a bass clef with a steady accompaniment. The second system continues the piece with similar rhythmic patterns and includes a triplet in the treble.

**YOU TELL 'EM IVORIES.** ZEZ CONFREY.

Allegro moderato. *p grazioso*

Musical score for 'You Tell 'em Ivories' in B-flat major, 2/4 time. It consists of two systems of piano accompaniment. The first system has a treble clef with a melody of eighth notes and a bass clef with a steady accompaniment. The second system continues the piece with similar rhythmic patterns and includes a crescendo and a forte dynamic marking.

**MY PET.** ZEZ CONFREY.

Allegro moderato. *mf staccato*

Musical score for 'My Pet' in D major, 2/4 time. It consists of two systems of piano accompaniment. The first system has a treble clef with a melody of eighth notes and a bass clef with a steady accompaniment. The second system continues the piece with similar rhythmic patterns and includes a triplet in the treble.

**POOR BUTTERMILK.** ZEZ CONFREY.

Moderato.

Musical score for 'Poor Buttermilk' in B-flat major, 2/4 time. It consists of two systems of piano accompaniment. The first system has a treble clef with a melody of eighth notes and a bass clef with a steady accompaniment. The second system continues the piece with similar rhythmic patterns and includes first and second endings.

Copies 2/- net (No Professional discount) from all Music Sellers or 2/1 direct from the Publishers:-  
**THE LAWRENCE WRIGHT MUSIC CO., DENMARK ST., (CHARING CROSS RD) LONDON, W.C.2.**

# America's Representative Piano Solos

THE COMPOSITIONS LISTED BELOW by **HENRY LANGE**  
(PIANIST WITH **PAUL WHITEMAN**) AND OTHER CELEBRATED PIANISTS & COMPOSERS.  
ARE IN THE VERY FRONT RANK OF NOVELTY PIANO CLASSICS  
*No Pianist playing Concert, Theatre, Dance or Hotel engagements*  
CAN AFFORD TO OVERLOOK THESE DISTINCTIVE ITEMS.

**CHO-PIANO.** HENRY LANGE.  
(Paul Whiteman's Orchestra)

Allegro moderato.



Musical score for 'CHO-PIANO' by Henry Lange. The score is in G major, 2/4 time, and consists of two systems of piano and left hand parts. The tempo is 'Allegro moderato'. The first system includes a 'L.H.' marking. The second system includes a dynamic marking of 'f'.

**SYMPHONOLA.** HENRY LANGE.

Moderato.



Musical score for 'SYMPHONOLA' by Henry Lange. The score is in B-flat major, 2/4 time, and consists of two systems of piano and left hand parts. The tempo is 'Moderato'. The first system includes a dynamic marking of 'mf'. The second system includes a dynamic marking of 'f'.

**LOOSE FINGERS.** STANLEY C. HOLT.

Fox-Trot tempo.



Musical score for 'LOOSE FINGERS' by Stanley C. Holt. The score is in B-flat major, 2/4 time, and consists of two systems of piano and left hand parts. The tempo is 'Fox-Trot tempo'. The first system includes a dynamic marking of 'mf'. The second system includes a dynamic marking of 'f'.

**TICKLES.** HENRY W. ROSS.

Moderato.



Musical score for 'TICKLES' by Henry W. Ross. The score is in B-flat major, 2/4 time, and consists of two systems of piano and left hand parts. The tempo is 'Moderato'. The first system includes a dynamic marking of 'mf'.

**THE GHOST OF THE PIANO.** ARTHUR SCHUTT.  
(Paul Specht's Orchestra)

Mysterioso.



Musical score for 'THE GHOST OF THE PIANO' by Arthur Schutt. The score is in B-flat major, 2/4 time, and consists of two systems of piano and left hand parts. The tempo is 'Mysterioso'. The first system includes a dynamic marking of 'mp'.

Get them now and show what you can do. 2/- each of all Music Sellers or 2/1 post free from  
**THE LAWRENCE WRIGHT MUSIC CO., DENMARK ST., (CHARING CROSS RD) LONDON, W.C.2.**

# ANNIE. YOU'RE JUST LIKE MY MAMMY.

Written and Composed by

WYNN STANLEY, ANDREW ALLEN  
& JOS. GEO. GILBERT.

Moderato.

PIANO.

Doh is D  
KEY B min || m : l | l : t | d' : t | l : s }

*ad lib*

*ff* *mf slower* *p*

Duncan fell in lovewith Annie  
Duncangazedat her and then he

Lau-rie, Oh, \_\_\_\_\_ Met her one day com-ing thro' the rye; \_\_\_\_\_ He just popp'd the  
gave a sigh, \_\_\_\_\_ Murmured, "Now I've seen you An-nie dear, \_\_\_\_\_ I know why the

B m i B m i B m i B m i

question there and then, but she \_\_\_\_\_ Said, "I din-na ken why you want to mar-ry me!"  
po-et said in that old song \_\_\_\_\_ "You are just the fair-est that ere the sun shone on;"

B m i

Duncan blush'd and murmur'd with a sigh \_\_\_\_\_ "Just lis-ten, and I'll tell you why. \_\_\_\_\_  
If you'll on-ly say you'll marry me \_\_\_\_\_ For you I'll lay me down and dee. \_\_\_\_\_

CHORUS.

|| m : r || d :- | d :- | d' :- | - : t | t :- | l :- | - :- | d' : l | s :- | m :- | r :- | d :- }

An-nie, you're just like my mam - my — You've the same sweet eyes of

*p-f*

A7 D B7 D G.

|| r :- | - :- | - : r : m | f :- | m :- | f :- | - :- | s :- | f e :- | s :- | - : l | t :- | t :- }

blue; When you smile at me, I can see The smile of

*f* *p*

|| l : f e | - :- | t :- | - :- | - : m : r | d :- | d :- | d' :- | - : t | t :- | l :- | - :- | d' : l }

mammy too; — And if you make me as hap - py — As my

|| s : l | s : m | r :- | d :- | l :- | - :- | - :- | l : t | d' :- | - : t | l : d' | - : l | s : l | s : f }

mi-ther did in days gone by — Then I'll no be sor-ry that I met An-nie

|| m : s | - :- | l : d' | - :- | d' :- | t :- | d' :- | - :- | - : m : r || d' :- | - :- | - :- | - : . ||

Laurie Coming thro' the rye. — An-nie rye. —

*ff*

D.S. al  $\text{ff}$

Annie, You're just like my mammy.

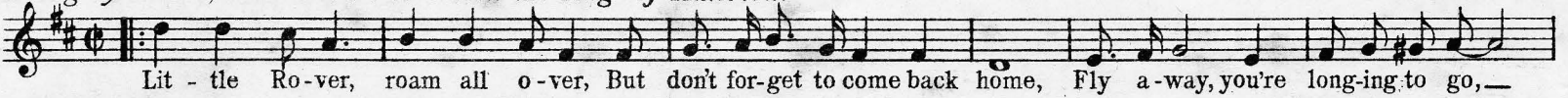
L.W.M. C<sup>o</sup> 750.

# LAWRENCE WRIGHT'S

## LATEST SONG & DANCE SUCCESSES

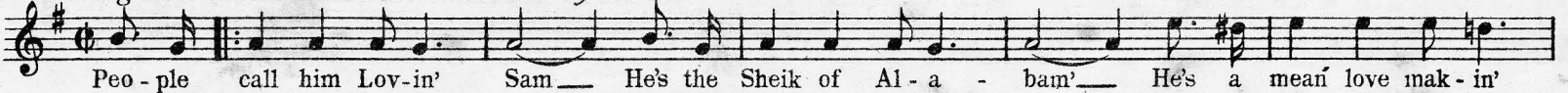
**LITTLE ROVER.** Lyric by Gus Kahn. Music by Walter Donaldson.

*Sung by Tucker, Fred Barnes etc. Now the Rage of America.*



**LOVIN' SAM.** Words by Jack Yellen. Music by Milton Ager.

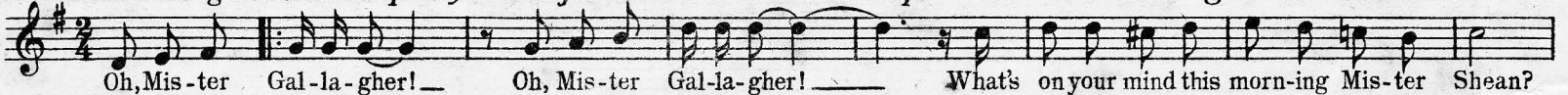
*The Song Fox-Trot that has taken London by storm.*



**MISTER GALLAGHER and MISTER SHEAN.**

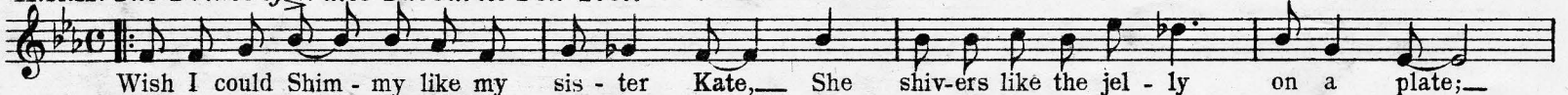
*The Two Bobs' great Duet. Equally successful as Fox-Trot or One-Step.*

Written and Composed by  
Ed. Gallagher & Al Shean.



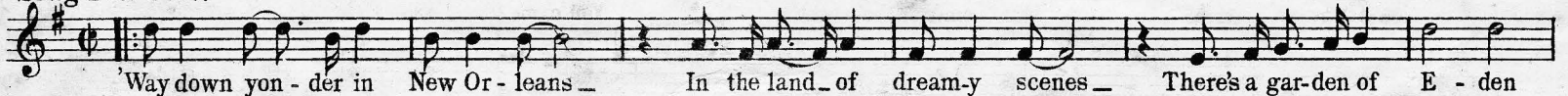
**I Wish I Could Shimmy Like My SISTER KATE.** Words and Music by A.J. Piron.

*H.R.H. The Prince of Wales' Favourite Fox-Trot.*



**WAY DOWN YONDER IN NEW ORLEANS.** By Creamer & Layton.

*Song Fox-Trot.*



**WANA.** Words and Music by Cliff Friend.

*The sensational hit of the World. No dance programme complete without it.*



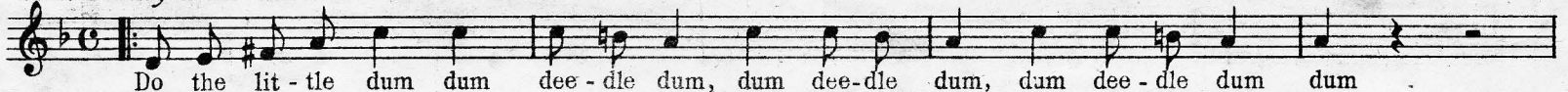
**WHO CARES?** Words by Jack Yellen. Music by Milton Ager.

*Ev'ryone says "The most Beautiful Melody ever heard."*



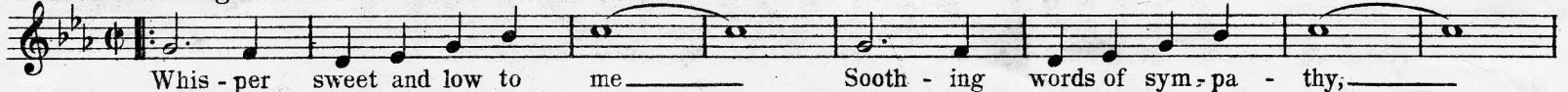
**DEEDLE DEEDLE DUM.** By Sam Coslow, Al. Sherman & Irving Mills.

*That Funny Little Fox-Trot.*



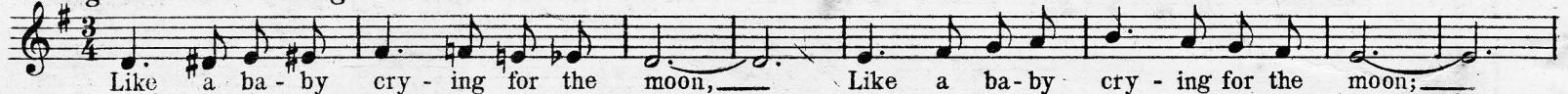
**SOOTHING.** By Ted Fiorito & Eddie Storman.

*A most haunting Ballad or Fox-Trot.*



**CRYING FOR THE MOON.** Lyric by Edgar Leslie. Music by Pete Wendling.

*A High Class Valse Song.*



Ask your Music Seller for Copies of these Successes, 2/-each or 2/1 post free from  
**THE LAWRENCE WRIGHT MUSIC CO., Denmark St., Charing Cross Road, London, W.C.2.**  
MUSICAL DIRECTORS—Write for Band Parts and particulars of our Subscription Club.

THE VALSE SENSATION OF THE WORLD  
**ROMANY ROSE**

MUSIC BY THE KING OF VALSE COMPOSERS:- HORATIO NICHOLLS.

WORDS BY WORTON DAVID.

Ro-ma - ny Rose - all the world knows That I love you,  
 Each wind that blows, each flow'r that grows, Seem to cheer me; When you're near me,

The musical score for 'Romany Rose' is written in 3/4 time with a key signature of one flat (Bb). It consists of two systems of piano accompaniment and vocal melody. The first system covers the lyrics 'Ro-ma - ny Rose - all the world knows That I love you,' and the second system covers 'Each wind that blows, each flow'r that grows, Seem to cheer me; When you're near me,'. The piano part features a characteristic waltz rhythm with chords in the right hand and a steady bass line in the left hand.

*Published also in Eb (Low) & G (High).*

OTHER PHENOMENAL HITS BY THE SAME WRITERS ARE:-

THE SENSATIONAL  
 MYSTERY FOX-TROT.

**JUST LIKE A THIEF**

Just like a thief that comes in the night, You came to me - I thought it was right,

The musical score for 'Just Like a Thief' is written in 2/4 time with a key signature of one flat (Bb). It features a fox-trot rhythm. The piano accompaniment is characterized by a steady eighth-note bass line and chords in the right hand. The vocal melody is simple and follows the lyrics: 'Just like a thief that comes in the night, You came to me - I thought it was right,'.

*Published also in Eb (Low) & G (High).*

**SHEBA** QUEEN OF ALL

THE WINTER GARDEN,  
 BLACKPOOL 'HIT'

She - ba, Queen of all, She - ba, hear my call,

The musical score for 'Sheba Queen of All' is written in 2/4 time with a key signature of one flat (Bb). It features a waltz-like rhythm. The piano accompaniment has a strong bass line and chords in the right hand. The vocal melody is simple and follows the lyrics: 'She - ba, Queen of all, She - ba, hear my call,'.

*Published also in D (High).*

A NEW RHYTHM  
 VALSE.

**ARRAWARRA**

THE FAVOURITE  
 OF THE BANDS.

When it's June beneath the moon In Ar-ra-war-ra, Ar-ra-war-ra, I'll be there.

The musical score for 'Arrawarra' is written in 3/4 time with a key signature of one flat (Bb). It features a valse rhythm. The piano accompaniment has a steady bass line and chords in the right hand. The vocal melody is simple and follows the lyrics: 'When it's June beneath the moon In Ar-ra-war-ra, Ar-ra-war-ra, I'll be there,'.

BE UP-TO-DATE AND ASK YOUR MUSIC SELLER FOR THEM TO-DAY 2/- EACH, OR 2/1 POST FREE FROM THE PUBLISHERS:  
**THE LAWRENCE WRIGHT MUSIC CO** 19, DENMARK ST. (CHARING X RD.)  
 LONDON, W.C.2.

*Ev'rybody will soon be Playing, Singing or Dancing*

THE LATEST SENSATION

# I LOVE ME

(I'M WILD ABOUT MYSELF.)

## CHORUS

I love me, I love me, I love my-self to death, I love me,  
I love me, I love me, ev-'ry place I go I love me,  
I love me, I love me, I'm wild a-bout my-self, I love me,

I love me, 'til I'm all out of breath, I stop at ev-'ry slot ma-chine that  
I love me, and at a mov-ie show I take my-self right by my arm and  
I love me, my pic-ture's on my shelf, You may not think I look so good, but

I should chance to pass, And give my-self a hug and squeeze as  
push me through the crowd, And lis-ten to my-self read me the  
me thinks I'm just fine, It's grand when I look in my eyes and

*The Biggest Craze since our Phenomenal Success*

**"YES! WE HAVE NO BANANAS"**

*Get your Copy to-day 2/6, or 2/1<sup>st</sup> Post Free From*

**THE LAWRENCE WRIGHT MUSIC CO**

DENMARK STREET, LONDON, W. C. 2.