

Lost and Fo(u)nd map and visual literacy in the archives

Carto 2015

Annual Conference of the Association of Canadian Map
Libraries and Archives
University of Ottawa
June 17, 2015

Rosa Orlandini
Map and GIS Librarian
York University Libraries
rorlan@yorku.ca

What **features/clues do you see on the image** that can assist in determining the geographic location of the image?

What **online tools, print and digital resources** would you use geo-locate this image?

We have over 6000 oblique aerial photos with minimal descriptions!

STARTING OUT IN DEEP WATER



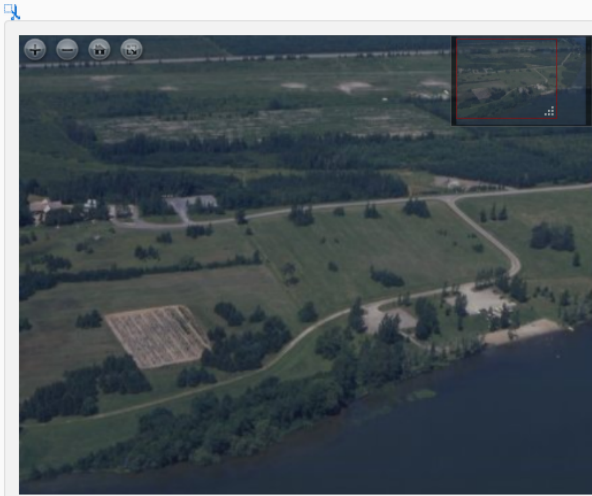
Copyright: Lou Wise

Title: Baxter [Ontario]. August 8, 1998.

Source: Lou Wise Fond. Clara Thomas Archives and Special Collections.

URI: <http://hdl.handle.net/10315/10439>

Baxter



Description

Oblique aerial view of Baxter

In collections

- Lou Wise fonds

Details

Title:	Baxter
Creator:	Lou Wise
Type:	still image
Genre:	Photograph
Subject(s):	Aerial photographs Air photos Airphotos
Collection:	Lou Wise fonds, F0539

Collection description:	http://archivesfa.library.yorku.ca/fonds/ON00370-f0000539.htm
Date:	1990-08-08
Date:	1990-08-08T00:00:00Z
Date:	2008-11-19
Date (added):	2013:11:28 12:11:41-05:00
Location:	2008-037 / 001 (8)
Resolution:	3200
Width (px):	4191
Height (px):	2869
Image orientation:	normal*
Colour space:	RGB
Note:	Google Maps: http://maps.google.com/maps?z=12%26t=m%26q=loc:45.098211+-75.624853 Open Street Maps: http://www.openstreetmap.org/?mlat=45.098211%26mlon=-75.624853%26zoom=15
Note:	Image is situated at 45.098° North (Latitude), 75.625° West (Longitude).
Identifier (local):	ASC20240
Identifier (MD5):	3244056856a578aaa8ad042510582a0f
Identifier (hdl):	http://hdl.handle.net/10315/10438
Identifier (other):	BAX00005
Municipality:	Ottawa
Region:	Rideau Valley Conservation Authority
Province:	Ontario
Country:	Canada
Continent:	North America
Coordinates:	45.098211, -75.624853
Rights/Usage:	Copyright of images owned by Lou Wise. Geo-spatial data and KML files generated by YUL staff is licensed under a Creative Commons Attribution-NonCommercial-ShareAlike 3.0 Unported License. For further copyright and contact information email: ascproj@yorku.ca .

- Geolocated the photo first
- Used a GIS to do metadata enhancement
- Used Google Sheets for Project and Data Management

Digital Library Platform:
dSPACE (initially), Islandora (at present)

Metadata Schema: MODs

Lou Wise Oblique Airphoto Collection - [Online Exhibit](http://www.library.yorku.ca/web/archives/online_exhibits/lou_wise_aerial_photographs/)

URL: http://www.library.yorku.ca/web/archives/online_exhibits/lou_wise_aerial_photographs/

ArcGIS Lou Wise Oblique Airphoto Collection

MODIFY MAP Sign In

Details Basemap Share Print Measure Find address or place

Baxter

Oblique aerial view of Baxter

Description

Oblique aerial view of Baxter

In collections

- Lou Wise fonds

Details

Title:	Baxter
Creator:	Lou Wise
Type:	still image
Genre:	Photograph
Subject(s):	Aerial photographs Air photos Airphotos
Collection:	Lou Wise fonds, F0539

Lou Wise Oblique Airphoto Collection

Title: Baxter

Description: Oblique aerial view of Baxter

Link to Photo: More info

Year: 1990-08-08T00:00:00

Municipality: Ottawa

Conservation Authority: Rideau Valley Conservation Authority

Regional Municipality: Ottawa Division

Latitude: 45.098

Longitude: -75.675

Zoom to

Description of the photo in the York Digital Library.

Interactive map of the collection showing the location of the Baxter photo.

Working with Archives

COLLABORATIONS & HAVING FUN





Title: A.R. Clark Tannery : Bad odor pix at A.R. Clark Tannery. Date: July 29, 1970.
Source: Toronto Telegram Fonds FO433. Clara Thomas Archives and Special Collections.
URL: <http://hdl.handle.net/10315/8188>



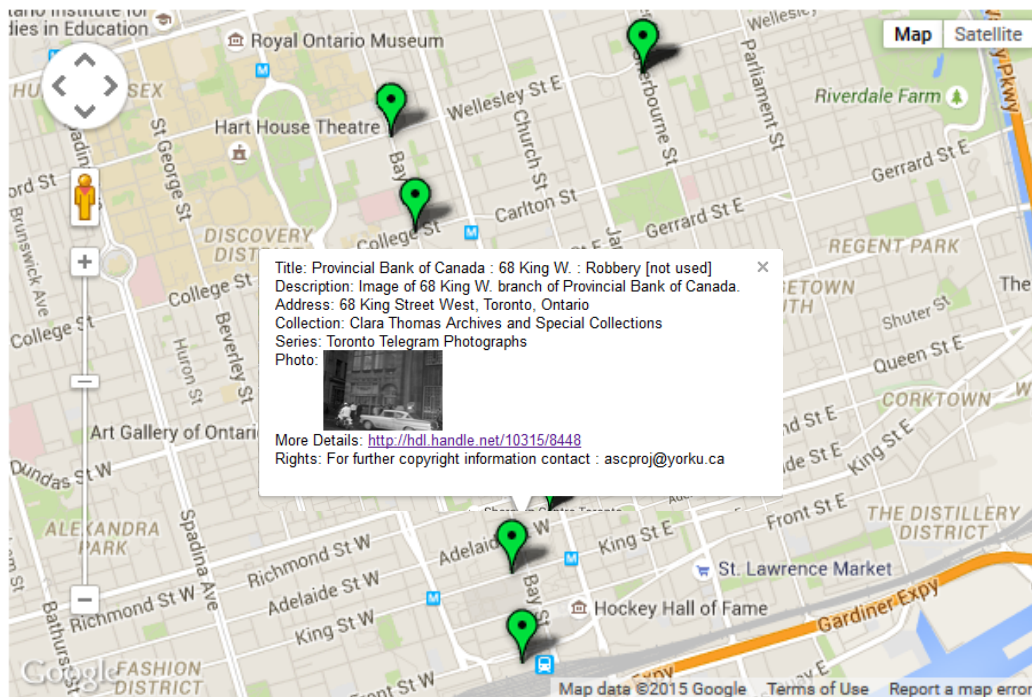
Title: Provincial Bank of Canada : 68 King W. Robbery. 15 April 1960.

Source: Toronto Telegram Fonds FO433. Clara Thomas Archives and Special Collections.

URL: <http://hdl.handle.net/10315/8448>

Title	Description	Address	Collection	Series	URL	Photo
[Canadian Imperial Bank of Commerce] : 199 Yonge Street : Attempted Robbery	Image of crowd standing outside 199 Yonge branch of Imperial Bank of Commerce	199 Yonge Street, Toronto, Ontario	Clara Thomas Archives and Special Collections	Toronto Telegram Photographs	http://hdl.handle.net/10315/7026	
Royal Bank of Canada : Bloor and Lansdowne : Robbery	Image of group of men standing inside the Bloor and Lansdowne branch of Royal Bank of Canada.	Lansdowne and Bloor, Toronto, Ontario	Clara Thomas Archives and Special Collections	Toronto Telegram Photographs	http://hdl.handle.net/10315/8517	
[Canadian Imperial Bank of Commerce] : 2 of women	Image of photograph No. 2 of women					

Spreadsheet with photo metadata and locations in Google Fusion Tables



Interactive Google Map, showing locations of Bank Robberies

Provincial Bank of Canada : 68 King W. : Robbery [not used]



Description

Image of 68 King W. branch of Provincial Bank of Canada.

In collections

• [Toronto Telegram](#)


Details

Title:	Provincial Bank of Canada : 68 King W. : Robbery [not used]
Alternative Title:	68 King [West]
Photographer:	Cooper
Creator(s):	Toronto Telegram
Publisher(s):	Toronto Telegram
Type:	still image
Genre:	Documentary Photography
Subject(s):	Toronto Telegram Banks Crimes Robberies
Collection:	Toronto Telegram fonds, F0433

Description of the photo in the York Digital Library

ascmap.blog.yorku.ca

Geolocating Research Resources for Beginners



YORK UNIVERSITY

Aerial photograph of Bowmanville Marsh by Lou Wise, 1988 ASC20402.

Home About Us Google Fusion Tables Neatline Historypin Layer OurOntario Crowdsourcing Reflections

Introduction

Welcome to our website! This is a learning space for librarians, teachers, archivists, and others, who are curious and interested about web-based mapping of digital collections or other types of information. So, if you have a collection of historical photos that can be associated with a specific place, or you want to map the locations of your library services, this website may be helpful.

On this website, we are using examples from the Clara Thomas Archives and Special Collections at York University:

- [Selection of photographs of bank robberies from the twentieth century selected from the Toronto Telegram Photograph Collection](#)
- [Oblique Aerial Photos of Southern Ontario from the Lou Wise Collection](#)
- [Photographs from the Toronto Telegram Photograph Collection selected by members of the Portuguese Canadian History Project](#)

There are several online mapping services and plug-ins to existing platforms that can be used to “map” your digital collection: Google Fusion, Historypin, and Neatline. Each platform/service is described with visual examples, tips, and comparisons. We will also provide additional information about such services as the VITA Toolkit provided by OurDigitalWorld and Layar.

Have fun!

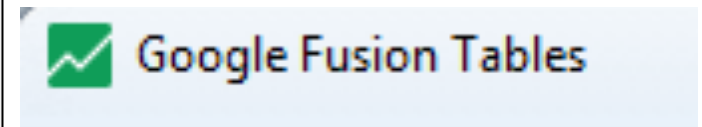
Geolocating Research Resources for Beginners

Proudly powered by WordPress.



historypin

A global community collaborating around history



URL: <http://ascmap.blog.yorku.ca>

the obsessive compulsive problem

**VANISHING AND OBSCURE
LANDSCAPES**



Description: Removing shelter belts at an [abandoned] farmstead [near] Darlingford. "Darlingford," "NE 28-2-7 W," "Rooting out shelter belts," "August 16/1964," **Source:** John Warkentin Fonds. Clara Thomas Archives and Special Collections.

URL: <https://digital.library.yorku.ca/yul-275931/removing-shelter-belts-abandoned-farmstead-near-darlingford>

Land Parcel Information Search

URL: https://www.masc.mb.ca/masc.nsf/land_parcel_info.html

Square Sections River / Parish Lots Instructions

Search by Square Section

Quarter

Section

Township *

Range *

Meridian *

NE

28

02

07

W

* Required

Search

ResetAll

ITA = Insurance Test Area

View Land Parcel in Google Maps	Soil & Risk Area	Insurable	Forage Region (map)	EMI	Canola Area (map)	Soybean Area (map)	Bean Area (map)	Lentil Area (map)	Sunflower Area (map)	Grain Corn Area (map)	OP Corn Area (map)	Silage Corn Area (map)
NE 28-02-07 W	CS	Yes	1	Yes	1	2	2	1	1	2	1	1

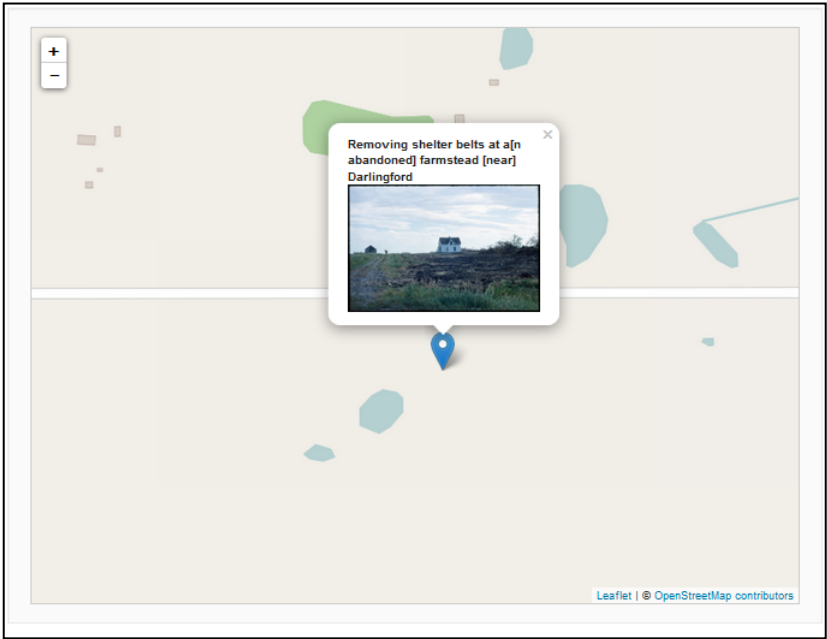
Note: The Land Parcel Information tool is for information purposes only. For insurance programs, an insured shall be bound by the applicable Confirmation of Insurance issued by the Corporation.



NE 28-02-07 W is in the Municipality of Pembina.

CLOSE

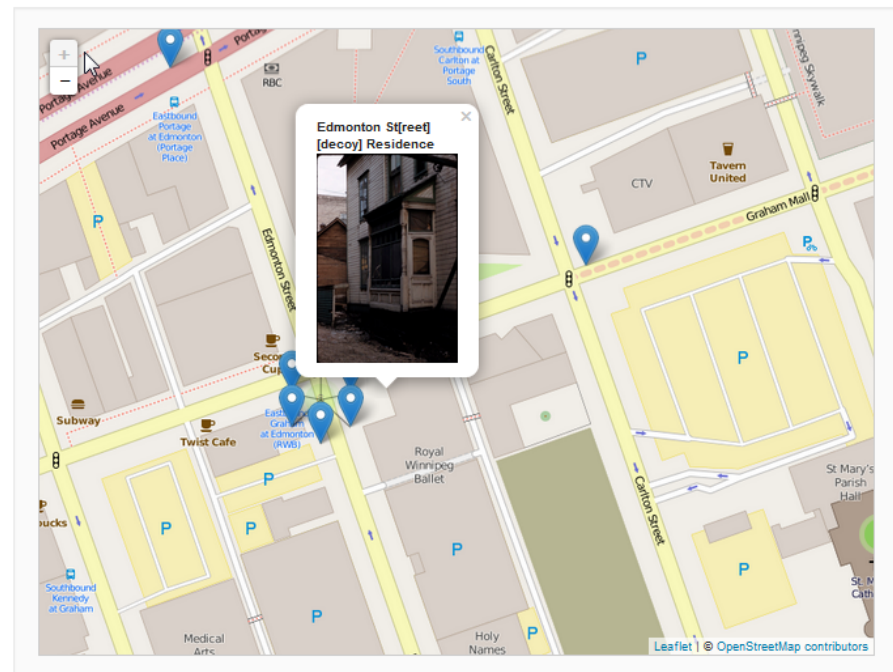
Result of the search in the Land Parcel Information Service



Interactive Map in York Digital Library showing the location of the photo

Geolocating Resources

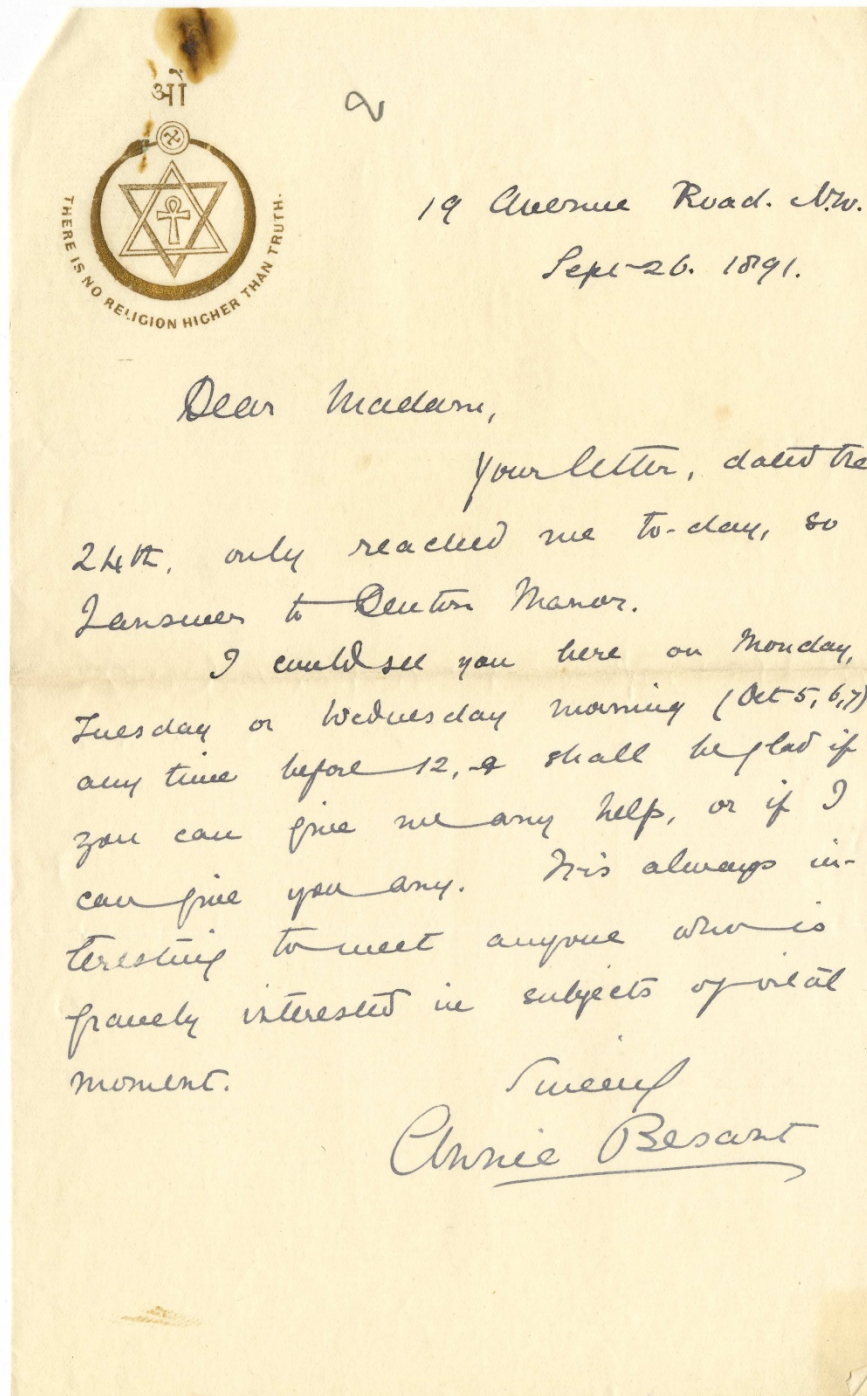
- Street Directories
- Historical Society Websites
- Local Archives
- “Local History Books”
- Historical Atlases
- HistoryPin
- Google Earth
- Google Image Search
- Fire Insurance Plans
- Airphotos (for places that no longer exist)
- Property Data Plans
- Township Range Section Locators
- Topographic Maps
- And much more



Interactive Map in York Digital Library showing the approximate location of the photo.

working with researchers

DIGITAL HUMANITIES & RESEARCH



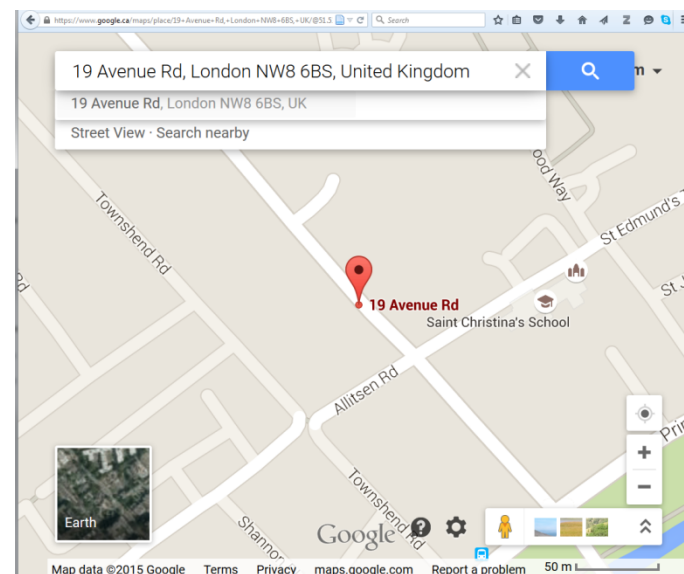
Title: Letter to Victoria Welby from Anne Bessant.
26 September 1891.

Source: Victoria Welby Fonds. Clara Thomas Archives and Special Collections.

URL: <https://digital.library.yorku.ca/yul-341044/asc17828>



Theosophical Society





Title: A.R. Clark Tannery : Bad odor pix at A.R. Clark Tannery. Date: July 29, 1970.
Source: Toronto Telegram Fonds FO433. Clara Thomas Archives and Special Collections.
URL: <http://hdl.handle.net/10315/8188>

Thank you!

QUESTIONS?