

POPULAR STANDARD EDITION

# I'M A LITTLE WALTZ

## LONESOME LITTLE WALTZ

*W.R. 219*

Successfully Introduced  
by  
MISS RUBY NORTON  
IN VAUDEVILLE



*April 22 - 1922*

FRED. FISHER, INC.  
224 WEST 46 STREET  
NEW YORK

*Richard Strauss  
Vienna*

*Dear Sir -*

*I'm a little Waltz Lonesome  
Little Waltz,  
Waiting for  
Though I*

MADE  
IN  
U.S.A.

WOHLMAN

WORDS AND MUSIC BY  
JEAN SCHWARTZ &  
CLARENCE SENNA

FRED. FISHER, INC.  
PUBLISHERS  
224 W. 46 ST. N.Y.

# FRED FISHER'S NEW BALLAD HIT

## Little Grey Sweetheart Of Mine

By The Writer of "Daddy You've Been A Mother To Me"

Words and Music by  
**FRED FISHER**

Moderato

Piano

*f* *rit.*

*Vamp* *p* I'm My

writ - ing this let - ter old pal - lie to you, — Do  
sweet-heart I know has an - oth - er dear beaux, — For

one lit - tle fa - vor for me, — My  
both she has kiss - es to spare, — My

Copyright MCMXXII by Fred Fisher, Inc. 224 W. 46th St., N.Y.C.

International Copyright Secured

Printed in U. S. A.

All Rights Reserved

HEAR IT ON YOUR FAVORITE PHONOGRAPH OR MUSIC ROLLS

# I'm A Little Waltz

3

(Lonesome Little Waltz)

BY JEAN SCHWARTZ  
and CLARENCE SENNA

Piano

Valse moderato

*f cresc.* *poco rit.* *rall.*

The piano introduction is in 3/4 time, marked 'Valse moderato'. It features a melody in the right hand and a supporting bass line in the left hand. The piece begins with a forte dynamic and a crescendo, followed by a 'poco rit.' section and ends with a 'rall.' section.

I re - mem - ber how you used to love me, Not ver - y  
My dear lead - er wont you take your Viol - in And let me

The first system of the vocal and piano accompaniment. The vocal line is in a single staff, and the piano accompaniment is in two staves. The lyrics are: 'I re - mem - ber how you used to love me, Not ver - y My dear lead - er wont you take your Viol - in And let me'.

long a go; You were false to your  
be your beau. Cast a - side your

The second system of the vocal and piano accompaniment. The vocal line is in a single staff, and the piano accompaniment is in two staves. The lyrics are: 'long a go; You were false to your be your beau. Cast a - side your'.

Sweet-heart Waltz, That's why I want you to know: \_\_\_\_\_  
two - step bride, And let the dan - cers all know: \_\_\_\_\_

The third system of the vocal and piano accompaniment. The vocal line is in a single staff, and the piano accompaniment is in two staves. The lyrics are: 'Sweet-heart Waltz, That's why I want you to know: \_\_\_\_\_ two - step bride, And let the dan - cers all know: \_\_\_\_\_'. The piano accompaniment includes a 'rall.' marking.

Refrain (*Tenderly*)

I'm a lit - tle waltz, Lone - some lit - tle waltz,

*p-f*

Wait - ing for your kind - ly in - vi - tat - ion,

Though I've been a - way, I've come back to stay,

If you'll give me your con - sid - er - at - ion,

I'm a lit - tle waltz, Lone - some lit - tle waltz,

I'm the ver - y sweet - est mel - o - dy,

Please in - vite me in, With your vi - ol - in, Say, have you for -

*cresc.* *poco rit.* *p.*

got - ten me? me?

*rall.*

HIS  
MBER  
can  
had  
your  
ograph  
your  
yer-  
ano

# FRED. FISHER'S BIG SONG HITS

SONOGRAPH RECORDS

SONOGRAPH RECORDS

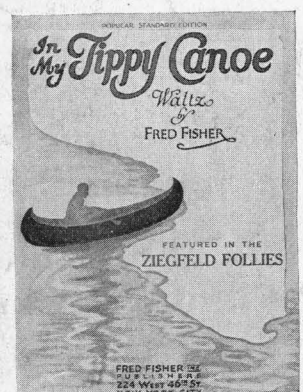
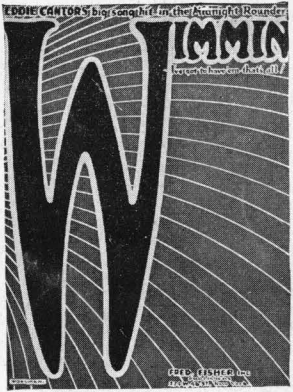


**Chorus**

"Ma" hes mak-ing

**Chorus**

Oh - wim-min, wim-min, wim-min I crave, -



**Chorus**

In my Tip-py ca-noe Tip-py ca

**Chorus**

When she be-gins to love,



**Chorus**

When the Hon-ey-moon was o

**Chorus**

Bun-dle of joy, From up a



**Chorus**

I've been sav-ing for a rain

**Chorus**

Glow lit-tle lan-te



Copyright MCMXXI by Fred Fisher, Inc. 224 W. 46th St., N.Y.C.  
 International Copyright Secured All Rights Reserved

# ON SALE AT ALL MUSIC STORES