

AS SUNG BY
MRS. MACKELCAN
RUSSELL McLEAN
P. REDFERNE HOLLINSHEAD
HAROLD JARVIS
ARTHUR BLIGHT
RUTHVEN MACDONALD
FRANK OLDFIELD

PATRIOTIC SONG



WORDS BY

DR. W. H. DRUMMOND

(BY KIND PERMISSION OF MRS. DRUMMOND.)

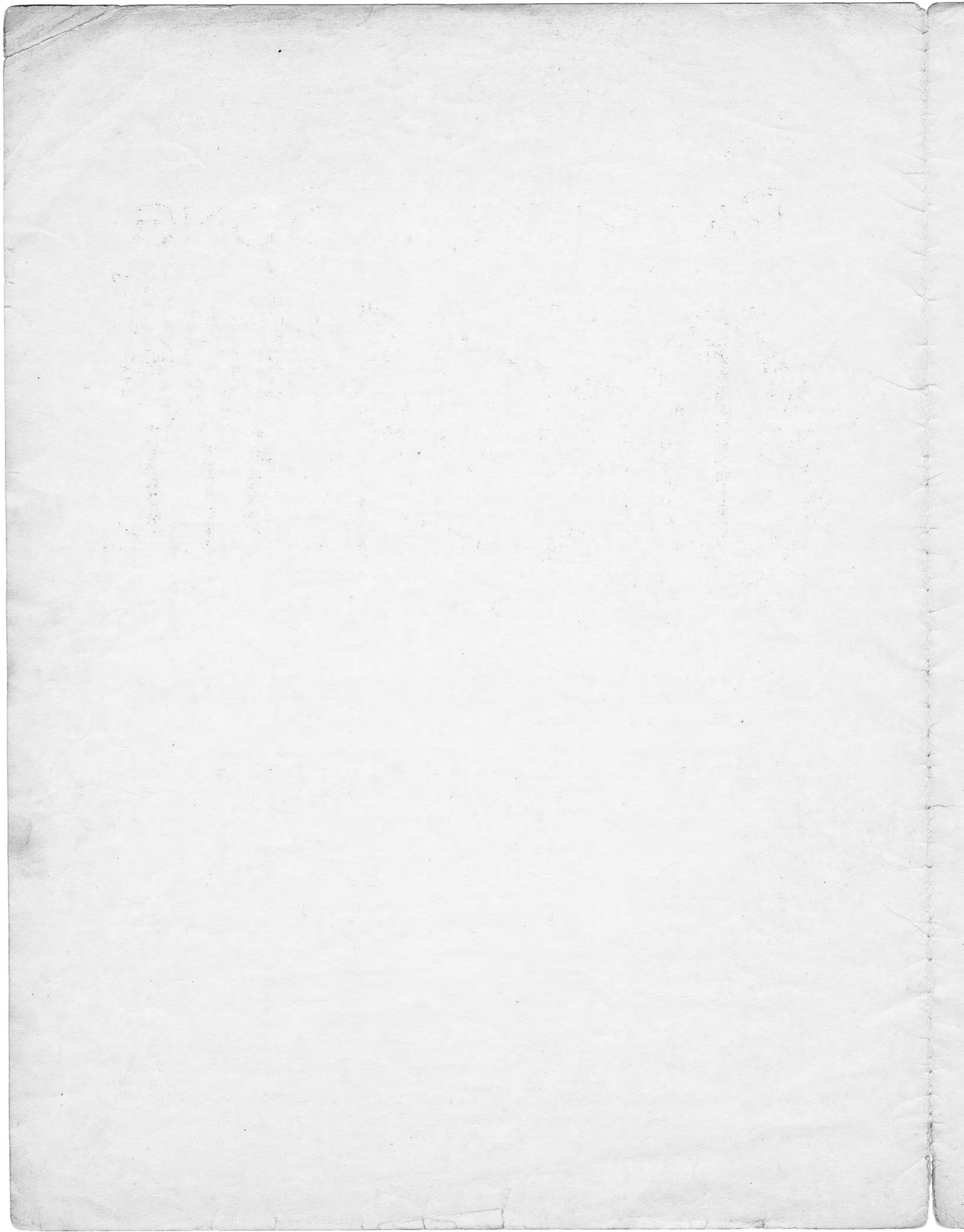
MUSIC BY

M. E. BLIGHT

60

FROM
Musgrave Bros

MUSGRAVE BROS. YONGE ARCADE, TORONTO, ONT.
MUSIC PUBLISHERS, IMPORTERS AND DEALERS
Retail Store No. 7, Wholesale and Mail Order Dept. No. 33
YONGE STREET ARCADE
TORONTO, CANADA.



BRITISH OVER ALLS

PATRIOTIC SONG

Poem by DR. W.H.DRUMMOND

Music by M.E.BLIGHT

Swinging march time

PIANO

The piano introduction is in 4/4 time, marked 'Swinging march time'. It begins with a treble clef and a key signature of one flat (B-flat). The music starts with a forte (f) dynamic and features a rhythmic pattern of eighth and sixteenth notes. The bass line consists of quarter notes. The piece concludes with a fortissimo (ff) dynamic.

When our fath - ers crossed the o - cean, In the glor - ious days gone by, They

The first line of the song features a vocal melody in the treble clef and piano accompaniment in the grand staff. The lyrics are: "When our fath - ers crossed the o - cean, In the glor - ious days gone by, They". The piano accompaniment continues with a steady eighth-note rhythm.

breathed their deep em - ot - ion, In many a tear and sigh, But a

The second line of the song continues the vocal melody and piano accompaniment. The lyrics are: "breathed their deep em - ot - ion, In many a tear and sigh, But a". The piano accompaniment maintains its rhythmic accompaniment.

bright - er lay ke fore them, Than the old old land that bore them, And

The third line of the song concludes the vocal melody and piano accompaniment on this page. The lyrics are: "bright - er lay ke fore them, Than the old old land that bore them, And". The piano accompaniment ends with a final chord.

rit.

all the wide world knows now, That land was Can - a - da

rit.

Refrain

A tempo

Then line up and try us, Who ev - er would den - y us The

free-dom of our birth-right, They'll find us like a wall. For we are Ca-na-dian, Ca -

molto rit

na - dian for ev - er, Ca - na - dian for ev - er But Brit - ish ov - er all.

colla voce

The piano introduction consists of two staves. The right hand features a melodic line with eighth and sixteenth notes, while the left hand provides a harmonic accompaniment with chords and single notes.

Our — fath-ers came to win — us, That land be-yond re-call, And the
Who shall blame them who shall blame us, If we tell our selves with pride, How a

The piano accompaniment for the first system of lyrics features a steady eighth-note bass line in the left hand and a more complex melodic line in the right hand, often using chords.

same blood flows with - in us, Of Bri - ton Celt or Gaul, Keep a -
thous-and years to tame us, The foe has oft - en tried And —

The piano accompaniment for the second system of lyrics continues with a consistent rhythmic pattern, using chords to support the vocal melody.

live each glow-ing em-ber, Of your sire-land but re-mem-ber, Our
now the Em-pire needs us, She re - quires no chains to lead us For

The piano accompaniment for the third system of lyrics concludes the page with a final chord in the right hand and a sustained bass note in the left hand.

rit.

count - ry is Ca - na - dian, What ev - er may be - fall.
 we are Em - pires child - ren And read - y at her call.

rit.

Refrain
a tempo

Then line up and try us, Who ev - er would den - y us, The

free - dom of our birth - right, They'll find us like a wall, For we are Ca - na - dian, Ca -

molto rit.

na - dian for ev - er, Ca - na - dian for ev - er, But Brit - ish ov - er all.

colla voce

