

Whole Team Meeting

AcTinSite – May 2022



Agenda

Starting Meeting & Agenda

Unlearning Colonialism & Introductions

Access Statement

AcTinSite Updates

Break

Solutions Landscape

Clustering Pathways to Interventions

Solution Whys

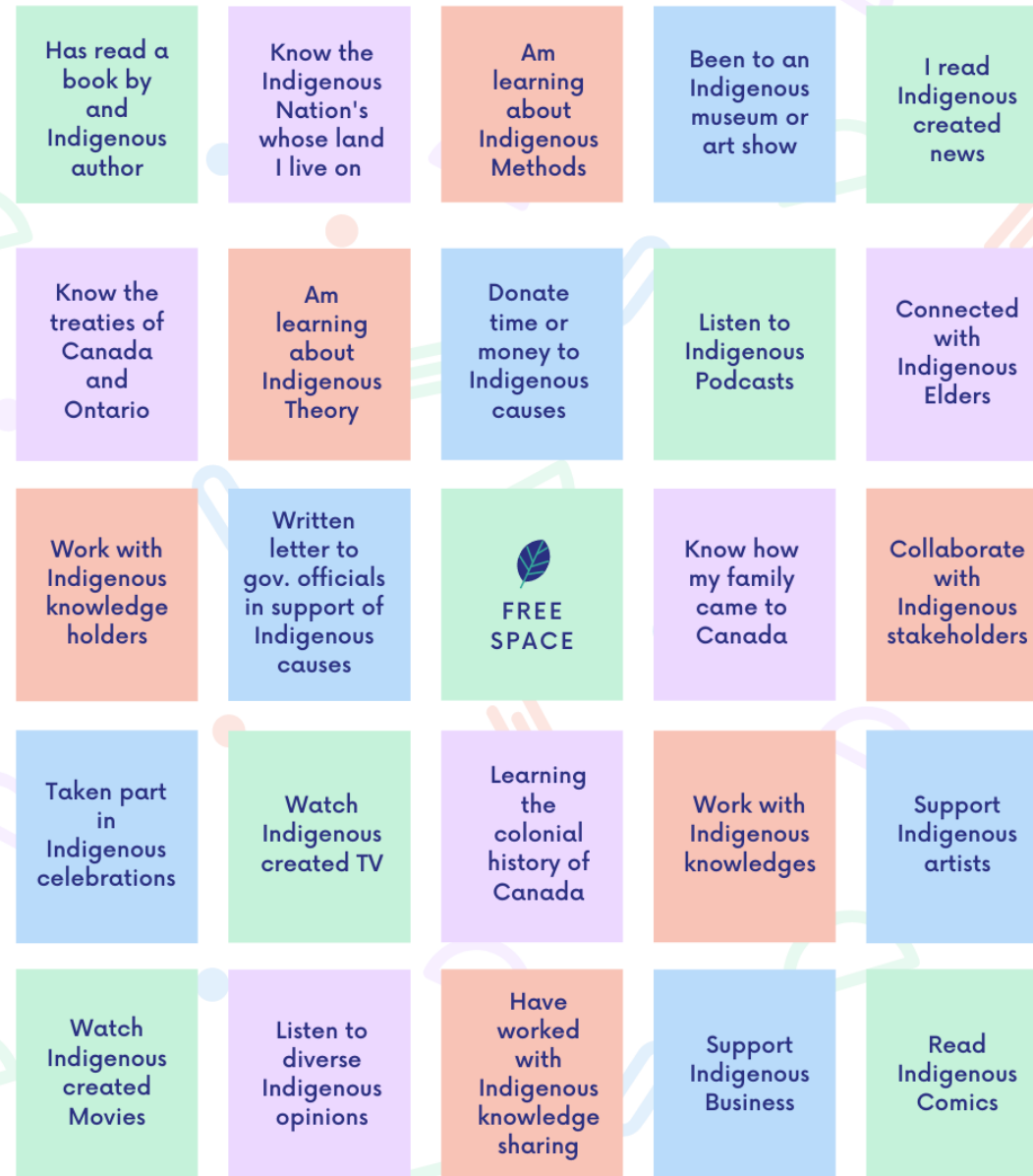
Break

Form of Stakeholder Engagement

Closing

Unlearning Colonialism and Introductions

- Share your name (and pronoun if you want)
- Where you work
- And one thing from the bingo card you have or will do.



General AcTinSite Update

Phase 1

Document Analysis
and Interviews

Phase 2

Design Charrette
and Analysis

Phase 3

Design and
Piloting

Phase 4

Knowledge Mobilization

WILAA

Community of Practice Update

Board

Nine board members from five AcTinSite Partners

Newsletter Set-up

Release the first newsletter in August

SSHRC Connection

Received one year Connection Grant

Website Live

Want to add a form of engagement

Student Panel

Panel and Networking May 26th

Knowledge Mobilization Update

Online Repository

4 organizations sharing on repository

Research Snapshots

4 snapshots shared through Research Imapct

Newsletters

Overall growth with 6 newsletters.

Design Charrette Report

Report helps ensure transparency.

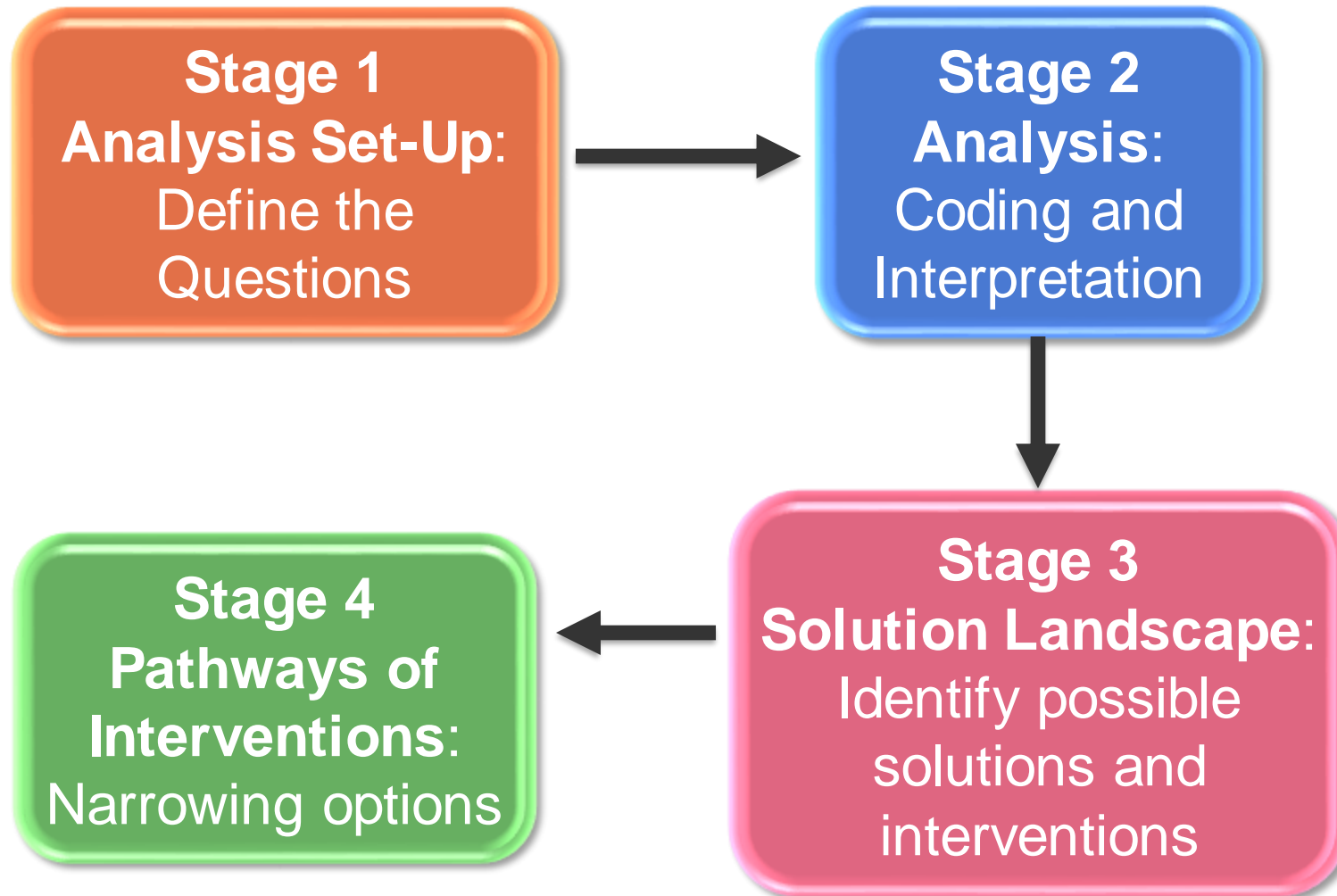
Other Materials

Over 10 other materials created and shared!

Three Challenges Analysis worked to address

- Lots of different solutions, we want to capture and consider them all.
- How do we prioritize or choose amongst the solutions?
- How do we account for the way ablism or other inequalities may have influenced which solutions were proposed?

Analysis



Break



Two Day Design Jam



Goal of the jam

- Further brainstorm problems and opportunities
- Discussions around calls to action
- Discussions around possible areas of intervention
- Challenges, opportunities and priorities

Solution Landscape

Improve Accommodation Process

Drop-in or peer support group for WIL students

Create mentorship program for WIL students (no eval)

Create clear and easy ways to access WIL info

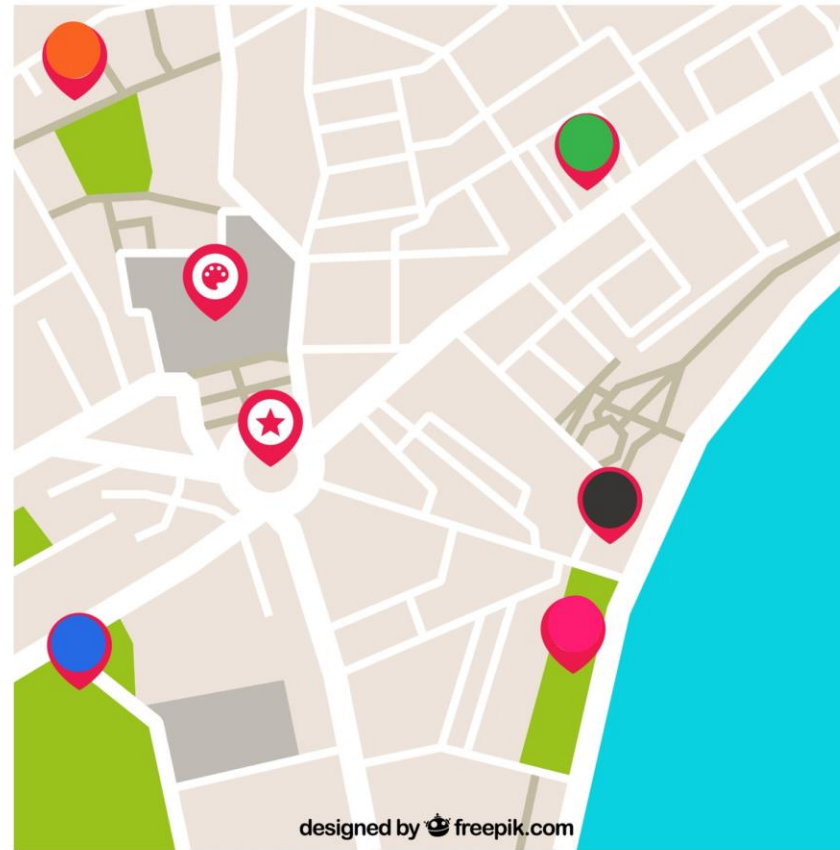
Explore non-disclosure routes to accoms

Create materials to make the accessible WIL process easier.

Improve Communication Between Higher Education Institution and Work-Integrated Learning Site

Assess and address barriers to clear communication

Use map and visuals to improve communication between HEI and WIL site



Address Systemic Ableism and Intersectional Oppression

Develop critical social learning process to address ableism

Creating accessible WIL principles and get signatories

Encourage Community-Based Advocacy and Recommendations.

Improve the proof of disability process: eg. divide from accomm process

Create Advocacy Packs for stakeholder groups

Create recommendations list for stakeholders.

Create Spaces Where People Who Support WIL Can Build Skills

Create Community of Practice (in process)

Improve access to current knowledge and training.

Educate about common barriers to accessible WIL across the system

Clustering Pathways to Interventions

Instructions:

[Go to Miro Board](#)

Chose

- 3 short-term options,
- 2 middle terms options, and
- 1 long term options.

Solution Why's

Clustering solutions, like we just did, can be helpful when we understand why people ranked solutions.

Why activity (let's discuss)

- Time (immediate vs long-term change)
- Address ablism
- Support advocacy
- Measurable
- Sustainable

Break



Forms of Stakeholder Engagement

Instructions:

[Go to Miro Board](#)

Move or copy stakeholder, AcTinSite Partner's or yourself into the places they are best suited in the rings of actions for the last year of AcTinSite.

What's Next?

- Finalizing Solutions
- Next Whole Team Meeting
- Contact Hilda for materials to share



We are done!

Thanks for being here today!