

# YorkSpace Collection

Work-Integrated Learning, Accessibility, Accommodations (WILAA)

Materials from SSHRC funded research project  
AcTinSite (2020-2023).



## AcTinSite Research Project Material

### PowerPoint for Whole Team Meeting – November 2020

Shared November 2020

#### Summary

Part of AcTinSite research aims is to ensure the work done is valuable to specific stakeholders. To have input from stakeholders, we created a partnership with institutions and departments that engage with the work-integrated learning process (WIL). For example, some of our partners are health care institutions that host WIL students. We also connected with instructors and staff from accessibility services at colleges and universities. When the AcTinSite research team meets with our partners, we call this a Whole Team meeting. Below is a PowerPoint for a Whole Team meeting held in November 2020.

#### Document Details


**Made PowerPoint:** Iris Epstein and Lindsay Stephens

**Knowledge Product Creator:** Hilda Smith

**Published on YorkSpace:** Fall 2021

#### AcTinSite Partners



PowerPoint for Whole Team Meeting – November 2020 © 2020 by [AcTinSite](#) is licensed under [CC BY-NC 4.0](#) 

# **Title: Accommodation to include SWD in placement site (AcTinSite): Interdisciplinary Intervention**

## **AcTinSite Funding**

SSHRC insight 2020-2023



# Agenda Today

## 1. Welcome and introduction

Brief intro: this is the project [2-4 min]

General full team members introductions [20 min]

## 2. Agreement for working together - co-creation activity

Breakout room activity [45 min]

[3 min break]

## 3. Update on project -

task (rainbow table) [10 min]

Call To Action: Corpus of resources

Discuss upcoming task (expert panel, interview study) [10 min]

Call To Action: recruitment of subjects for the interview study

## 4. Wrap up/conclusion - [5 min]

Survey -

Our landing page -

# Background

Fund: SSHRC IDG, 2017-2019

We Asked: What are barriers / success of Nursing students who identify with disability (SWD) and instructors in nursing clinical placements

Partners: York University; University of Toronto; George Brown College

Two Publications: 1) Scoping Review (30 studies reviewed) 2) Findings:

- 1) SWD felt excluded & expressed physical and attitudinal barriers in placement's sites.
- 2) SWD and instructors felt education and placement institutions need to shifting responsibility from students and increase accessibility

We ask **How do we increase accessibility in placements?**

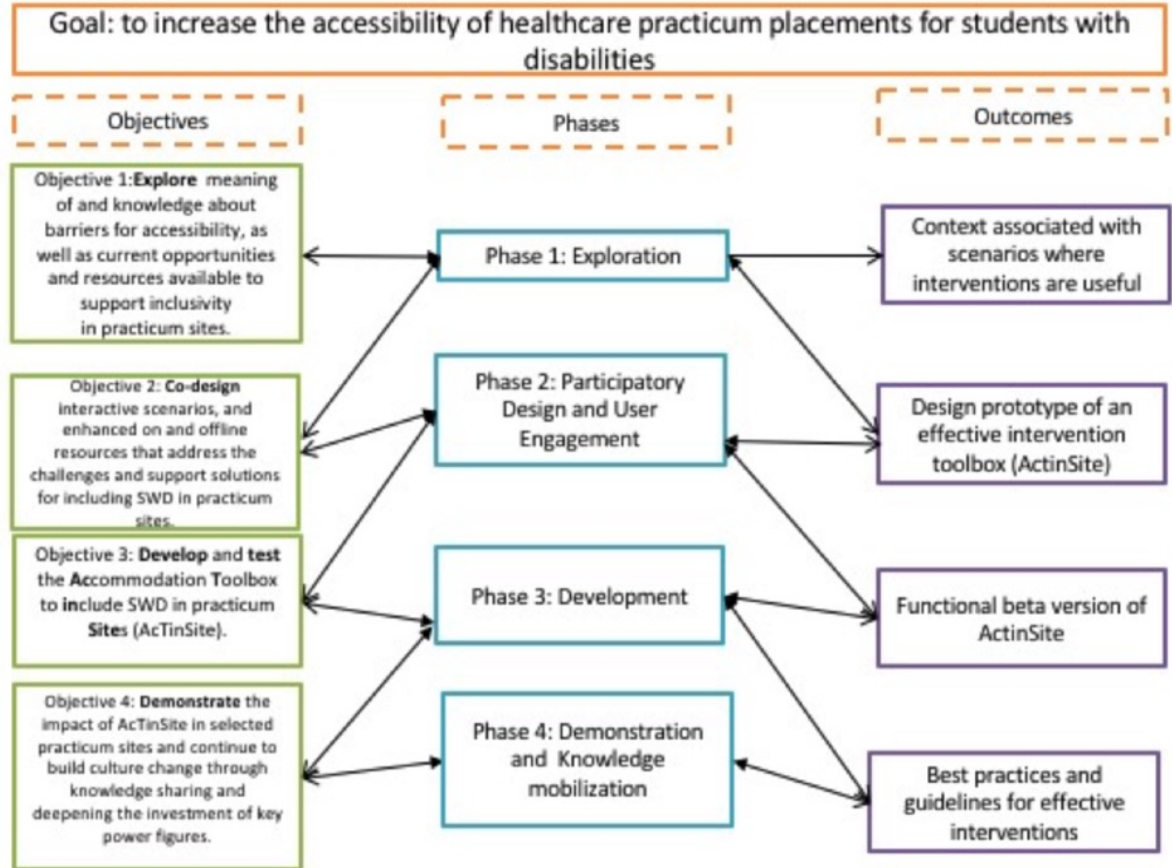
Leads

AcTinSite project

# ActinSite – Project Goal

4

**Project Goal:**  
Increase  
accessibility in  
placements sites



# Institutions partners: We got ethical approval from all partners

## Education Institutions:

York University: Faculty of Health; Students Accessibility Services (SAS)

George Brown College: Nursing, SAS

University of Toronto: Occupational therapy; Social Work, SAS

## Placement institutions:

Sunnybrook- in/out Adult population

SickKids Hospital- in/out Pediatric population



UNIVERSITY OF  
TORONTO

YORK  
UNIVERSITÉ  
UNIVERSITY



Sunnybrook  
HEALTH SCIENCES CENTRE

SickKids  
THE HOSPITAL FOR  
SICK CHILDREN

# Interdisciplinary and co-participatory:

## Participants and investigators: Blur lines

We will interview diverse health professional disciplines: nursing; social work; Occupational health ... who are in diverse roles such as students; educators; staff; administration

Co-investigators and collaborators include experts from other disciplines such as Geography and Planning ; Human Factor Engineering; Design and Education

Experts panel- health professional SWD ongoing consultation



UNIVERSITY OF  
TORONTO

YORK  
UNIVERSITÉ  
UNIVERSITY







# Introduction

Lets get to know each other...





**Activity to breakout room**

**For interviews: Staff , clinician, educators, preceptor, manager, director who are interacting with students with disability in placements sites**

**Recruiting Now**

**For expert panels: We acknowledge in this meeting no representation from students with disability. We are recruiting students who identify with disability and who do not identify to be in our expert panel**



**Questions?**  
**Answers?next step**

Thank you!!